



Lift Lines

= No. 289 January 2025 =

Mountain High Snowspo8t Club, PO Bo x 2182, Portland, OR 97208

50th Anniversary and Other News



Our Mountain High Snowsport Club, aka the merged Plaza and EdgeSet Ski Clubs, is celebrating its **50th anniversary**. As part of the celebration, we are putting together a **club history** document, and we need your help to flesh it out. Send us a picture or two and/or a story or two about your most memorable moments in the club. See page 2.

The **McCall/Brundage Mt/Tamarack ski trip** has some important updates. The deadline to get our discounted group rate at the McCall Best Western is this Wednesday, January 15. So reserve your room now. Also, there will be a pizza party on our arrival day, February 9. Contact Linda McGavin. See pages 3 and 9.



~~\$269~~
\$15

Lift ticket prices are going through the roof, already costing around \$325 per day at a few places on holiday days, but even the regular rate of \$259 or \$269 is getting super high. A week of skiing at those rates would cost you \$1,883 just for tickets, not counting lodging, transportation and \$25 cheese-burgers.

Luckily, there are alternatives. We can still ski for \$15 per day at some places, or \$35 at other places, or even \$75 at some of the larger ski areas, which is between 3 and 7 times cheaper than at the mega-resorts. You just need to find these places. See article "Ski More for Less", on pages 4 - 7.

Note the color code.
Our club is blue.

2025 CALENDAR

Blue: Mountain High events
Maroon: NWSCC / FWSA / Multi-club
Black: General interest events

JANUARY 2025

- Jan. 15 (Wed)** NWSCC Meeting online, via Zoom, with guest speakers from Next Adventure.
- Jan. 23 (Thur.)** Happy Hour gathering at the Clackams. Claim Jumper 4 - 7 pm.
- Jan. 27 (Mon)** Mt. High Board Meeting at the Round Table Pizza, Lake Oswego

FEBRUARY 2025

- Feb. 15 (Sat)** Chocolate Party at Debbi's place.
- Feb. 15 (Sat)** History Happy Hour at Mt. Hood Museum in Government Camp

SKI TRIPS 2025

- Feb. 9 - 14** McCall, Brundage, Tamarack trip
- Feb. 23 - 25** White Pass (WA) ski trip
- Mar. 12 - 16** Bachelor Blast
- Mar. 23-28** Whitefish Mtn. (MT) ski trip.

Pole Flags



As of this winter, our club members will be able to find each other on the slopes more easily.

Pole flags with the club's name can help us identify other club members on the slopes. Attach the flag to your ski pole. They will be distributed to

everyone who wants them. If you didn't pick up your flag at the Kick-off Party in November, you can get one in any of the following ways:

- Contact Shelly Seger at slseger@comcast.net and she will mail you one.
- Come to the Happy Hour on January 23 and pick up your flag there.
- Trip and activity leaders will have flags for the trip participants. That includes Bill King, Linda McGavin, Shelly Seger, & Kurt Wilke.

Social Events

January events are on page 2.

- **Jan. 15 - NWSCC online meeting** with Next Adventure.
- **Jan. 23. Mt. High Happy Hour** at the Claim Jumper in Clackamas.

February events are on page 12.

- **Feb. 15 - Mt. High Chocolate Party** at Debbi's.
- **Feb. 15 - History Happy Hour** at the Mt. Hood Museum in Government Camp.

Mt.High

Mountain High Club Anniversary - 50 years of fun



Our club is celebrating its 50th anniversary this year. 1975 - 2025.

What is your favorite memory of any of the club's activities, parties, trips, races, etc.? Do you have a memorable picture? Or a story? Send us something. It would be very helpful.

We are compiling a small booklet of our club's history. The first 15 pages are already posted on our website, on the [HISTORY page](#), under the sub-heading of **Mt. High Club History**. See

item #2, which is also titled: [Mt. High Club History](#). Item #1 is an introduction to our club as it is now. Or follow this link: <http://www.mthigh.org/History/Mt-High-Club-History.pdf>

Check it out and add to it. Help us to enlarge this document by adding your pictures and stories. Ideally, send us a picture and a short description or short story to go with it. Or send just a story.

It doesn't have to be very old stuff. What today seems new will soon be history. Just wait another 10 or 20 or 50 years. If a photo is just a printed copy and not digital, try scanning it in, or mail it to us, we'll scan it, and then return it to you.

Contact **Emilio Trampuz**, Emilio2000@earthlink.net, or mail Emilio, 4742 Liberty Rd. S., #296, Salem OR 97302.



Human slalom, a club tradition

NWSCC Meeting - online, via Zoom

January 15, 2025 (Wednesday) - online.

EVERYONE IS WELCOME!

This NWSCC meeting will be held by Zoom. Social 6:45. Meeting starts at 7:00 pm.

Special Guest Speaker:

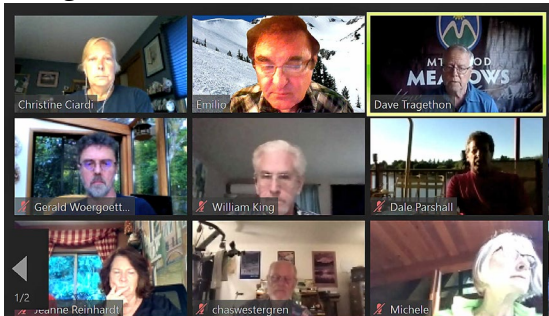
Next Adventure's Ski Category Buyer, **Jeremy Rooper!**

Jeremy will present about the exciting new products for 2024-25 and the other demo, tune, and repair services that Next Adventure offers.

Join Zoom Meeting any time after 6:45 pm.

<https://zoom.us/j/99019265279?pwd=b0dqYTI0UFY4M3IKSHk4ZlQxcWhldz09>

Meeting ID: 990 1926 5279, Passcode: 346306



Mt.High

Happy Hour

January 23, 2025 (Thursday)

Starting at 4 pm.



Come join your ski buddies at a Happy hour event at the Claim Jumper Steakhouse & Bar in Clackamas.

9085 SE Sunnyside Rd, Clackamas, OR 97015.

See [Google map](#) of the Claim Jumper location.

This is next to the junction of I-205 and Sunnyside Rd. Take the Sunnyside exit off of I-205.

We'll be there from 4 to 7 pm. Come join us for a beverage or two and some yummy hors d'oeuvres. Spend the evening with friends and find out who's going where this ski season.

RSVP **Debbi** at ijustwannarun1@comcast.net or 503-314-7078 no later than Jan. 20th so we can ensure we have enough spots saved.

Powder Mountain Changes

Powder Mountain, near Ogden, Utah, is one of the largest ski areas in the US. Unfortunately, under new ownership, they made a number of significant changes, mostly disappointing.

1. Powder Mountain is now a **semi-private** ski area. Some of the terrain is closed to the public.
2. Three new lifts are just for home-owners' access.
3. Some terrain will be open only to home owners.
4. All the weekends in February will be reserved for season pass holders. No day tickets on those days.
5. A season pass costs \$1,649.
6. A day lift ticket costs \$259, and day tickets will be limited in number.
7. Powder Mountain has left the Indy Pass, and has not joined any other multi-area passes. A world unto itself. Pay through the nose or don't come.

So, unless you are very rich, this sounds like a goodbye to Powder Mountain. It was good till now. Our club had organized several ski trips there. No more.

Indy Pass Growth

In the United States, we are approaching a time when the majority of ski areas will belong to a multi-area ski pass, such as Indy, IKON, Epic, or Mountain Collective. They all keep growing.



The **Indy Pass** has grown the most during this past year, adding 103 downhill ski areas to its roster. All other passes combined have added about 52 more ski areas.

Among the new Indy Pass ski areas are Mt. Eyak AK, Bear Valley CA, Loveland CO, Powderhorn CO, Mt. Ashland OR, and Eagle Point UT. And that is on top of the 100 or so ski areas that have already been part of the Indy Pass for years.

Indy has also added several ski areas in Europe, Canada, and Japan. A tour operator has organized ski trips to Japan specifically to visit the Indy Pass ski areas there.

More skiers have purchased the Indy Pass than either the Epic or Ikon passes.

Mt. High

McCall Ski Trip News



Anyone interested in joining us on the McCall ski trip to Brundage Mt. and Tamarack, on February 9 - 14, 2025, please note the following:

1. There might be some singles who want **roommates**. Contact Linda for help.
2. **The deadline for booking the Best Western in McCall** at our group rates is **January 15**. Our trip leader, Linda McGavin, needs you to let her know if you have booked!. Contact Linda at: trips@mthigh.org , 503-652-2840. More details on page 9.
3. The Bogus Basin Ski Club will host **pizza and beverages** for the Super Bowl party on our arrival date, February 9! This is another reason Linda needs to have trip participants' names in advance. Contact Linda at: trips@mthigh.org , 503-652-2840. See page 9.

Mt. Bachelor for Sale

Powdr Corp is looking to sell Mt. Bachelor. We just don't know yet who the buyer might be. Some of the largest ski resort owners are interested in purchasing Mt. Bachelor. Among them are Alterra, Vail Resorts, Boyne Resorts, and Mountain Capital Partners, which recently purchased Willamette Pass in Oregon.

The most interesting potential buyer is **Mt. Bachelor Community Inc.**, founded by Deschutes County Residents who are trying to raise enough funds to be able to compete for the purchase of Mt. Bachelor.

Mt. Ashland New Lift

Mt. Ashland has installed a new lift called "Lithia". It opened on Saturday, December 14, 2024.

It's a relatively short lift. It has 5 towers supporting a fixed grip triple chair manufactured by SkyTrac. It utilizes an all-electric auxiliary motor, as opposed to the traditional diesel - one of the first in the US to use this technology.

The new lift will serve beginner and intermediate terrain near the day lodge.

A Different Approach to Skiing

- Ski more for less -

by Emilio Trampuz

~~\$15~~
~~\$269~~

In 1987/88, a day lift ticket at Timberline cost only \$15. Mt. Hood Skibowl charged only \$14. And Mt. Hood Meadows cost \$20. Then prices started rising. Some time around the year 2010, lift ticket prices cost more than \$100 in many places, and we were all shocked. But now, by 2025, ski areas such as Vail, Beaver Creek, Deer Valley and Park City, are charging **\$329** for a day ticket around Christmas and New Year. On other days, they charge around **\$259** or **\$269**, and a senior discount often amounts to just \$10 or \$20 off.

But there are alternatives. You can still ski for \$15 or \$20, or even FREE at some ski areas. Other ski areas might charge you \$35 or even \$75, still 4 to 7 times less than the mega resorts. And it just so happens that these same ski areas are less crowded, have no lift lines, the powder lasts longer, and the cafeteria prices are reasonable. What is there not to like? You just need to discover these hidden gems.



Here is a lift ticket price list from **Hart Highlands** ski area in British Columbia, located on the outskirts of the town of Prince George. These prices are in Canadian dollars. It would be less in US dollars.

Most people want to ski only at the largest and most famous ski areas, such as Whistler/Blackcomb, Aspen/Snowmass, Vail Resorts, or Palisades Tahoe (formerly known as Squaw Valley). They think they would be missing something at smaller or less well known ski areas.

The reality is that the most famous ski areas are also the most crowded because everyone wants to ski there, and they have the longest lift lines. Fresh powder gets all cut up within an hour. They are also the most expensive, both for lift tickets and for cafeteria prices. Why pay \$20 for a burger when you can get one for \$7 at a less famous ski area?

With lift ticket prices rising to \$300, skiing is rapidly becoming a sport for the rich. The reason for the high prices on day tickets is that ski resorts want to force us to buy a season pass and thus force us to be their loyal customers and ski nowhere else. But, fortunately, alternatives are still available. You can still get an all day lift ticket for \$15, or \$20, or even for free.



The simple solution is to visit ski areas that are less well known. Ski at places that are locally owned by skiers, by mom and pop, not by corporations. Avoid anything that has the word **“resort”** in its name, and ski at **“ski areas”** and **“ski hills”**.

Bear Paw Ski Bowl in northern Montana charges \$25 for an adult all day lift ticket. It offers steeps, powder and 860 vertical feet.

In the past 6 or 7 years, I have gradually developed a yearning to **ski at all the ski areas in the West**. Everything west of Denver, Colorado. A total of 225 ski areas. And this includes the 35 ski areas in British Columbia, and the 30 ski areas in Alberta. So far, I have found a lot of hidden gems.

I was lucky to have already skied at most of the famous places when I was younger, at a time before they started raising their prices into the stratosphere. So, most of the ski areas that remain on my bucket list now are the less well known ones. Some are small, some are medium sized, but some are quite large, unknown due to their remote location.

Examples of large but unknown ski areas are:

1. **Marmot Basin, AB**, 3000 vertical feet, 1720 acres, 91 trails, served by 6 chairlifts.
2. **Castle Mountain, AB**, 2845 vertical feet, 3592 acres, 95 trails, served by 4 chairlifts and a T-bar. A lot of very steep slopes.
3. **Powder King, B.C.**, 2100 vertical feet, 925 acres, 38 trails, served by a triple chair and 2 surface lifts.
4. **Eagle Point, UT**, 1500 vertical feet, 600 acres, 43 trails, served by 5 lifts.
5. **Turner Mt., MT**, 2110 vertical feet, 22 named trails, 60% of them are black diamonds, and more than 50% are left ungroomed on purpose for the powder enthusiasts. See video at: <https://youtu.be/ByjC-ztjauU?feature=shared> .
6. **Ski Apache, N.M.**, 1900 vertical feet, 750 acres, 55 trails, served by a gondola and 11 lifts.

There is a whole world of skiing that most people will never see or ski. And it just happens to be the most affordable part of the ski world.

And here are some of the most affordable of all. These are smaller ski areas, but they have enough terrain to keep you busy for a day.

1. **Blizzard Mt. ID**. No lift tickets here. This ski area runs on donations. There is a jar in the day lodge where you can drop in a few dollars and sign your name in a visitor's book. See short video at: <https://youtu.be/pjyxUbZZIx8> .
2. **Badger Mt. WA**. Officially advertised as the cheapest skiing in North America. A day lift ticket cost \$10, but recently rose to \$15.
3. **Rotarun Ski Area**, near Hailey, ID. Lift tickets cost \$15, but night skiing on Wednesdays is free. See short video at: https://youtu.be/o-y_xOIttZw .

There are dozens upon dozens of smaller and medium sized ski areas. Each one is unique. You will discover many hidden gems. The less well known they are the better. I love going to ski areas that nobody has ever heard of. They have so many advantages, including:

- a) There are no tourists there. Just locals. Experience the local culture.
- b) There are no lift lines, or maybe very short ones.
- c) The slopes are not crowded.
- d) The fresh powder stays untouched much longer.
- e) The cafeteria prices are much more affordable.
- f) Each ski area is unique and has something different to offer. If you like variety of terrain, go visit all the smaller ski areas you can find. You will also be helping the local economy.

There are unique experiences at many places. The skiable terrain is quite varied. And there are some special moments. For example, check out the westernmost ski area in Canada – **Shames Mountain**, which is further west and further north than the two ski areas on Vancouver Island. The groomed part of Shames Mountain is quite large, but on top of that Shames Mountain offers 7800 acres of skiable powder in the side-country, accessible from the ski lifts.

Experience the northernmost ski area in British Columbia – **Bear Mountain**, and the northernmost ski area in Alberta – **Whispering Pines**.

All of these are so far north that the powder can be extremely light and it can remain suspended in the air for a long time, so you can witness amazing **shimmering pillars of light** descending

from the sun.

Some examples of unique experiences:

1. **Ferguson Ridge** in Eastern Oregon. Unhurried, relaxed atmosphere. And they have a saying about “Fergie, where 2 inches feels like 6.”
2. **Salmo Ski Hill**, near Salmo, BC. A long slope full of rolling hills, as if some giants had carved a series of giant moguls in the snow. You can choose how steep the terrain you want. If you ski in the troughs, it’s easy. If you ski over each of the giant mogul-like hills, you get steeper terrain.
3. **Magic Mountain, ID.** It really felt like magic there on a nice powder day. The chairlift is completely self-served, and the terrain is really interesting, a lot of it left ungroomed for powder hounds.
4. **The shimmering pillars of light.** I have seen them at two places: **Troll Mountain** and **Shames Mountain**, both in British Columbia, but you might see them at other places too. The further north, the better.



Compare the experiences. Recently, I was skiing one of these places with no lift lines at all. You just ski directly to the lift. During the 5 or 6 minutes ride on the chairlift, I was thinking about my friends who were probably skiing at Mt. Hood Meadows around that same time. I compared our experiences. While they were standing in a lift line for 5 or 6 minutes (and sometimes longer), I was riding the chairlift up. By the end of the 5 or 6 minutes, my friends finally boarded a chairlift, while I was starting to fly down the hill. I was waiting less and skiing more, and for much less money. What is there not to like?

If instead of **daily lift tickets** you prefer to think in terms of **season passes**, consider this. Would you rather pay around **\$1,000** for an IKON or an EPIC pass that gives you access to the most expensive and most crowded places? Or would you rather pay around **\$300** for an INDY pass, which gives you 2 free ski days at over 200 mostly uncrowded ski areas? You could be skiing all winter with no lift lines for just \$300 or less.

NOTE: The prices above are only approximate, because the actual price depends on how early you purchase it. A pass can cost less or more than the prices mentioned above, depending on

when you buy it.

The problem is that most people want to visit only the “**best**” ski areas, and various articles in ski magazines, newspapers and online are basically popularity contests, where the top best ski areas are those that got the most votes. So, people end up going to the most famous and most popular and therefore most crowded and most expensive places.

What is “best” about that? Best is a very relative term. Best for what? Best for beginners? Best for advanced skiers? Best for fresh powder? Best for variety of terrain? Best for the views? Best for the local flavor? Best for how uncrowded they are?

There are a dozen ski areas around Lake Tahoe, but everyone wants to ski only at the 3 or 4 most famous ones, such as Pallisades Tahoe (Squaw and Alpine Meadows), Northstar-at-Tahoe, and Heavenly Valley. Most people are missing the best views of Lake Tahoe that can be seen from Diamond Peak and Homewood ski areas.



Here’s a view from the **Homewood ski area**. There are still several hundred vertical feet down to the lake. And if the “Experts only” sign scares you, there is also an intermediate trail down just a bit further to the right.

Here’s a suggestion: **Go ski them all** and find out for yourself which ski areas are best for you. To avoid the crowds, go where most people don’t go. Ski more for less.

You just might catch the same bug I did, and suddenly want to ski ALL the ski areas in North America. Or at least ALL the ski areas in your State and your neighboring State.

If you have time to watch a longer video or two, check out the following videos, each showing a different road trip to between 4 and 9 different ski areas:

1. **Skiing Northern BC and Alberta.** <https://youtu.be/C5dGsLvDqBc>
2. **Northern BC & Alberta - part 2.** <https://youtu.be/gW-Fo9g7LBw>
3. **Skiing North Central Washington.** <https://youtu.be/YqKitBSdaqY>
4. **Idaho Ski Safari to Less Well Known Places.** <https://youtu.be/zkfSXX-7bSo>

Most skiers will never see any of these places. This is your chance to take a peek.

Trips

As promised in the previous issue of Lift Lines, 2 more trips have been added to the list. For details on each trip, please see the **TRIPS** page on our website, www.mthigh.org.

Mountain High Club Trips



1. Feb. 9 - 14, 2025. **Brundage / Tamarack / McCall trip.** Drive to trip. Lodging at the Best Western McCall: \$154 + tax = \$177.10 per room. INDY Pass. Contact Linda McGavin.
2. Feb. 23-25, 2025. **White Pass ski trip.** Drive to trip. Lodging in Packwood. Indy Pass. Contact: Shelly Seger, sseger@comcast.net.
3. March 23 - 28, 2025. **Whitefish Mountain Trip.** Drive to trip. Last week of March. Lodging at the Kandahar Lodge, with ski in and almost ski-out access (requiring just a short walk across a parking lot. Contact Bill King.



NW Ski Club Council Trips

The NWSCC trips are always open to all ski clubs in the Northwest, but our Mountain High club members are often in the the majority at the Bachelor Blast. More info at www.nwskiers.org.

1. Feb 7 - 15, 2025. **Ski trip to Zermatt, Switzerland.** This trip is organized by the S'no Jokes club in Seattle. There is room for more. Open to all clubs.
2. Feb. 21 - March 1, 2025. **Ski trip to the Dolomites** and optional Venice add on. This trip is organized by the Bogus Basin Ski Club from Boise, ID. They are a member of the NWSCC.
3. March 12 - 16, 2025. **Bachelor Blast.** Organized by our very own Linda McGavin.



Far West Ski Association Trips

The FWSA trips are open to hundreds of clubs throughout the western States. These are usually trips to the largest and most well known destination resorts. A few of our club members are regular participants, but for the most part, our club members will be in the minority. However, you will get to meet skiers from all over the West. More info at: www.fwsa.org

1. Sept. 27 - Oct. 7, 2024. FWSA Africa Adventure to Tanzania and Zanzibar.
2. Oct. 19 - Nov. 2, 2024. FWSA Dive trip - the Best of the Phillipines.
3. Jan. 25 - Feb. 1, 2025: FWSA Ski Week at Banff / Lake Louise / Sunshine Village, Canada.
4. February 2025: FWSA International Ski Week in Val d'Isere, France.
5. March 23 - 28, 2025. - FWSA Mini Ski Week to Big White, BC, Canada.
6. Summer 2025. FWSA Summer SKi Week in Valle Nevado, Chile. Optional visit Atacama Desert.
7. Sept. 9 - 19, 2025. Canadian Fall Foliage Cruise. Adventure trip.

Mt. High Indy Pass ski trip McCall, Idaho Brundage Mountain & Tamarack

3 - 5 nights. 2 - 4 ski days. Travel by car, train, or plane.

February 9 –14, 2025. -- Join us for a wonderful adventure. Up to 4 days skiing February 9-14 (Monday-Friday) Your choice, depending upon your free lift tickets and how many days you want to ski

START DATE: Sunday, Feb. 9 – Drive to McCall & check in. You can book as many as 5 nights at our group rate. Any other nights will be at the hotel's full rate – no discount. Book as many as you want.

This is a driving trip like the past few years.

1. Everyone will be driving their own car. We will NOT have a bus.
2. For lodging, you can select your own roommate (optional), or simply have a room to yourself. Your choice. We will not assign roommates.
3. This trip is designed to use the **Indy Pass** (2 free days at each ski area). If you do not have a pass we suggest you buy lift tickets online in advance to get the best price. We will not have enough people to get group lift tickets.



HOTEL - Book your own room under our group rate at the **Best Western Plus** in McCall, 211 S. 3rd Street, McCall, ID; **208-634-2230**. The hotel is located 11 miles from Brundage and 20 miles from Tamarack.

Our group rate is \$154 + tax = **\$177.10** per room per night, per double queen room or king room (quantities limited). If you have a roommate, the cost will be only half of that per person. This is less than last year.

To get this rate, just tell the hotel you are with the Mountain High club. **Deadline is January 15.**

The hotel offers free parking, wireless internet, non-smoking spacious rooms, a 24-hour indoor swimming pool, oversized jacuzzi tub, spa, sauna and gym. Enjoy a daily, complimentary full hot buffet breakfast which includes freshly made breakfast burritos, breakfast sandwiches, cereal, fruit, yogurt, juice, pastries (and they will deliver to your room from 6:30 to 9:30 a.m.). They have an omelette chef also on some days.

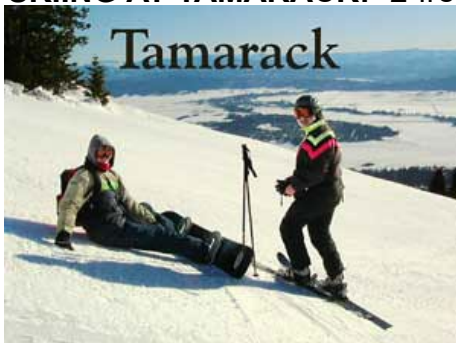
The rooms have premium bedding, High Speed Wireless Internet, Refrigerator, Microwave, DirectTV, Hairdryer, Iron/Ironing board, Desk, and Alarm Clock. Note that there is an elevator!

Please book your hotel room early – we only have a certain number of rooms. After **January 15** our room block will expire, but you can still make reservations at our rate if there is space. There is no penalty for canceling up to one week before your arrival.

NEWS: On arrival day, Feb. 9, there will be a pizza party, organized by the Bogus Basin Ski Club.

SKIING AT BRUNDAGE: Indy Passholders do not need to pre-schedule visits. Simply bring your valid photo ID to the on-mountain Guest Services office to redeem your ticket for the day. In addition to the two days included in the pass purchase, you may purchase a third day at 25% off. You can make that purchase the day of your visit. Like many ski areas these days, Brundage will sell tickets online in advance, at some kind of discount which is not known at this time. They've opened the online ticket buying page, so check ahead.

SKIING AT TAMARACK: 2 free days with the Indy Pass (you may purchase a third day at 25% off), or buy tickets online the night before.



TO SIGN UP: Just reserve your hotel room and then contact Linda, our trip leader, to let her know you will participate in this trip,

KEEP OUR TRIP LEADER INFORMED

Everyone who signs up for this trip, please contact Linda McGavin and let her know the following:

- Did you make your hotel reservations, and for how many nights?
- Where do you expect to ski, and do you have an Indy Pass?

Trip leader: Linda McGavin, trips@mthigh.org, 503-652-2840.

Mt. High Indy Pass ski trip White Pass (WA)

2 nights. 2 - 4 ski days. Travel by car.

February 23 – 25, 2025. -- Sunday - Tuesday.

2 nights lodging, 2 - 4 days of skiing.

The official nights are Sunday the 23rd and Monday the 24th, but discounted hotel pricing is good from 2/19/2025 – 2/28/2025 if you want to extend your trip

Lodging: Cowlitz River Lodge

Info: <https://www.elodging.net/cowlitz>

Reservations: Use this link to get discounted pricing:

<https://hotels.cloudbeds.com/reservation/8oP2t5#promo=Mountain%20High%20Snowsport%20Club>.



Details:

- Welcome Party Potluck and no-host drinks in Lodge dining/lobby area. Time: 6:pm
- Located downtown Packwood. Shelly will arrange for Monday night meal at brewery. Likely Longmire Springs Brewery which is 1/4th mile walk from Lodge.
- All rooms include microwave
- The lodge does not have any pool/spa facility

Pricing: Does not include 2% hotel tax. The price below is for 2024 and includes a 10% discount applied when placing on-line reservations with priority code. Pricing will likely increase closer to year-end so reserve early for best price.

- King Room: \$134 per night
- 2 Queen Beds: \$134 per night
- 4 Queen Suite with kitchen and fireplace: \$242 per night

White Pass Group Pricing

We need to know if you have an Indy Pass, or any other qualifying pass for White Pass ski area. If we have 15+ members not having or not using their pass, then we can get a mid-week group discount.

Breakfast Restaurant – Santo Milagro

Located on the way to White Pass. Shelly will continue to work with this Restaurant while contacting other locations in Packwood and perhaps the Ski Lodge.

The owner is considering a breakfast special for our club or a free cup of coffee with breakfast purchase. This may be limited to one day.

How to sign up for this trip:

1. Make lodging reservation on-line using provided link
2. Email Shelly to confirm you're going.
3. In the email -- specify if you intend to use a ski pass or if you want to be included in a group ski discount. Group ski discount requires 15 or more people.

Trip Leader: Shelly Seger, slseger@comcast.net



Mt. High

Whitefish Mtn. Resort Trip



March 23 - 28, 2025. 5 nights by car, or plane, or +2 nights on train.

Whitefish Mountain Resort offers 3000 acres of skiing on all sides of Big Mountain. It has 11 chair lifts (3 express quads). It has 2,353 vertical feet and 105 named runs plus vast amounts of bowl and tree skiing.

This will be a flexible, arrange your own transportation trip. Amtrak runs overnight from Portland or Vancouver to Whitefish and return. Current prices



start as low as \$79 per person each way reserved coach. There are a limited number of sleeper berths available. If you prefer to drive, it is a ten-hour drive, and you can stop to ski at other places along the way.

We will be staying at the **Kandahar Lodge**, a very nice on-mountain hotel with a Swiss or

Austrian feel. The lobby/great room has a huge fireplace, an award-winning restaurant open only for dinner, and a small separate bar. There is no elevator. All the rooms are on the 2nd and 3rd floors.

It has a free van that will take you where you want to go on the mountain (not into town, there's a free public snow bus for that). The van only runs during the day. At night it's less than a five-minute walk to the bars and restaurants in the upper village, or to catch the snow bus into town.

You can ski-in but would have to walk 50 yards across a parking lot to ski out to a lift. Or take the free van.

For those traveling by train:

- * You will spend 2 nights on the train. The first and the last. You can sleep in the reclining seats, but it is highly recommended to ask for a sleeper car.
- * The train leaves Portland at 4:45 pm the day before and travels through the night. You need to reserve a ticket for March 22, not March 23..
- * Train arrives in Whitefish early in the morning (at 7:41 am), and you can go skiing right away, after leaving your luggage in Kandahar lodge.
- * The train leaves Whitefish late in the evening, at 8:56 pm. You can ski all day and still have time for dinner in town before boarding the train home.

Price includes:

Free European-style continental breakfast, après ski cookies, freshly made popcorn, hot chocolate, coffee, and tea. Heated boot rooms and ski rooms. Free Wi-Fi, laundry, 24-hour front desk, large outdoor jacuzzi, steam room, and fitness center. Massages are available by appointment. All rooms have at least a small refrigerator and microwave. Some rooms have small kitchens; those will be assigned on a first-come first-served basis.

Everyone arrives on Sunday, March 23, 2025 and checks out on Friday, March 28 (5 nights). We will do our best to connect people needing a roommate but the final choice of roommate is your responsibility. If you end up without a roommate, you would have to pay a single supplement (double room price less \$15).

The Club will be providing one **pizza party with beverages**.

Lodging and lift tickets **will be purchased through the Club**.

Trip leader:

Bill King, willie2k@ymail.com or 360-977-7482.

Pricing

Lodging (2 people per room)

for all 5 nights:

\$415/person for 5 nights - 2Q room

\$440 for 5 nights - 1Q studio, kitchen

\$440 for 5 nights - Exec suite, sold out.

All lodging starts Sunday, March 23 and ends on March 27. We all check out in the morning of March 28.

Lift Tickets

Adult 1-day \$83

Adult 2+ days \$76.60/day

65-69 1-day \$71

65-69 2+ days \$65.50/day

70+ 1 day or (2+) \$30 (\$28.20)

2+ days tickets have a 2-day grace period (2 of 4; 3 of 5; 4 of 6, etc.)

Holders of a full Mt. Hood Meadows season pass get 3 free days.

Let our trip captain know how many lift tickets you need.

Payment and cancellation details

\$200 deposit due at signup.

Remaining balance is due by January 10.

Final date to cancel with full refund is January 10.

We hope you join us for this exciting trip.

See our [Mt. High Trip Cancellation Policy](#).

Please use the [Dough Transmittal form](#) on the Forms & Docs page on our web site, or on the next to last page in our newsletter. Make check payable to Mountain High Snowsport Club, and mail it to:

Mountain High

PO Box 2182

Portland, OR 97208

or email it to Forms@mthigh.org

Trip leader:

Bill King, willie2k@ymail.com or 360-977-7482.

NWSCC Bachelor Blast

4 nights, with 2 or 3 nights options

March 12 - 16, 2025.

Start: Wednesday, March 12, 2025, at 5:00 PM

End: Sunday, March 16, 2025, at 3:00 PM

Everyone from all NWSCC clubs is invited to join us!

Lodging: We are staying at the **Element by Westin**, 1526 NW Wall St., Bend, Oregon, just 3 blocks from downtown Bend. Sign up early. Rooms are limited. **Prices go up February 11, 2025.** Price is per person, double occupancy. Find your own roommate or pay a single supplement.

DEADLINE: To get the group discount on lodging, please reserve your room by February 10, 2025.

Contact Linda if it appears that the type of room you want is sold out. Linda will readjust the rooms so you can sign up.

Mt. Bachelor is on the IKON Pass. It offers 4,000 skiable acres and 3,365 vertical feet.

Questions? - Contact: Linda McGavin at editor@nwskiers.org / www.nwskiers.org

NOTE: This is a multi-club trip open to all Northwest ski clubs. It is organized by the NW Ski Club Council. Payments for this trip should be sent to the NWSCC; not to our club. Instead of the Dough Transmittal Form, please sign up directly with the NWSCC.

Details on the [NWSCC website, www.nwskiers.org](http://www.nwskiers.org), on the **TRAVEL & EVENTS / TRIPS** page.



Chocolate Party

February 15, 2025. (Saturday). - 7:00 pm.



Join us at the annual Chocolate party. BYOB. You can simply come to sample the desserts or bring your favorite chocolate dessert and enter it in the contest for:

- the Most Creative,
- the Most Chocolatey and/or Decadent;
- the Most Light and/or Healthy

We also need plenty of tasters and judges. So, come and sample the sweet goodies, bring a friend, and enjoy a night of decadence, fun and good cheer

We'll have hors d'oeuvres and party foods. Please BYOB.

Please RSVP to Debbi Kor if you are coming: ijustwannarun1@comcast.net.

Location: Debbi Kor
8513 NE 149th Ave, Vancouver, WA
See [Google map](#).

History Happy Hour

February 15, 2025

(Saturday)

Doors open 6:00 pm.

Presentation starts at 7 pm.

Andy Poorman, the creator of the "Mt. Hood Podcast" will be our speaker. He will talk about his two-year old podcast, his motivation for starting it and his plans for future episodes.

Andy has agreed to collaborate with MHCCM to record oral histories with some of our community members. This will be a great addition to our historical archives.

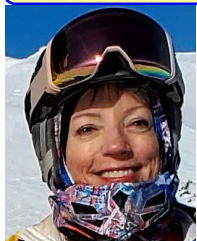
There will be wine, beer and soft drinks available for purchase. Enjoy your drink and then sit back and enjoy the presentation.

The presentation is free. Donation to the Museum are welcome. For more information call the museum at 503-272-3301.

Mt. Hood Cultural Center and Museum
ph: 503-272-3301, info@mthoodmuseum.org
www.mthoodmuseum.org



2023/2024 Volunteer of the Year



Sandra Kaufman has been selected as our club's Volunteer of the Year. She has been a social spark-plug in our club for years. More recently, she has accepted the position of our club's Secretary as well as Membership director.

UPDATE: Sandra has recently accepted the position of the FWSA VP Marketing and Sponsorship, a position that Debbi Kor had held for many years.

Mountain High Board Meeting

Usually last Monday of the month.
Jan. 27 (Mon.): Open to all who want to get involved with the club.
 Gather at **6:00 pm**. Start at **6:30 pm**.
Round Table Pizza, 16444 Boones Ferry Rd., Lake Grove, Lake Oswego, OR. See [Google map](#).

Mountain High snowsport club contacts:

President: Bill King M: 614-371-4762
Vice-President: Debbi Kor H: 503-314-7078
Secretary: Sandra Kaufman H: 503-810-7787
Treasurer: Nancy Pratt H: 503-593-9427
Past President: Kurt Krueger H: 503-625-1492
Membership Director: Bill King M: 614-371-4762
Racing Director: Alan Bean H: 503-849-8009
Newsletter Editor: Emilio Trampuz H: 503-510-1477
Social Activities: Debbi Kor H: 503-314-7078
Trips Director: Linda McGavin H: 503-652-2840

President@mthigh.org
Vicepresident@mthigh.org
Secretary@mthigh.org
Treasurer@mthigh.org
PastPresident@mthigh.org
Membership@mthigh.org
Racing@mthigh.org
newsletter@mthigh.org
ijustwannarun1@comcast.net
Trips@mthigh.org

General info:
info@mthigh.org
 Web site:
www.mthigh.org

DOUGH TRANSMITTAL FORM

Mail check payable to: Mountain High Snowsport Club, PO Box 2182, Portland, OR 97208.

PLEASE PRINT CLEARLY: New membership or Renewal

Name(s): _____ Birthday (MM/DD) _____

Address: _____

Phone (Hm): _____ Phone (Wk): _____

Email (Hm): _____ Email (Wk): _____

Email Preferences: - Newsletter (once a month): yes, link only yes, complete file no
 No changes (same as last year) - Club news & events (between newsletters): yes no
 - Other ski news (NWSCC, FWSA, ski areas, trips...): yes no
 - Is it OK to share your email address with other club members? Yes No

I certify that I am 21 years of age or more. I acknowledge that I am responsible for my own safety and conduct. I hereby agree to be bound by all Mountain High Snowsport Club bylaws and regulations, including the Trip Cancellation Policy. I hereby release Mountain High Snowsport Club, and any of their agents (officers, directors, trip captains, and any other Club representatives) from liability for personal injury, property damage, or any other liability of any kind connected with my participation in any club-related activity. Furthermore, I agree to indemnify and hold the Club and any of their agents harmless from any and all liabilities of any kind which may be incurred or asserted against the Club or any of their agents in any way relating to my negligence or willful misconduct connected with my participation in the club's activities.

Please take my money, and apply it toward the following Ski Club fun stuff:	Deposit?	Paid in full?
<input type="checkbox"/> Annual Membership (Oct. 1 - Sept. 30): Single (\$30); couple (\$50)	\$ _____	_____
<input type="checkbox"/> Mountain High Cookbook: 34 pages of recipes from our members \$10	\$ _____	_____
<input type="checkbox"/> Whitefish Mountain trip (March 23 - 28, 2025). Deposit: \$200. (with optional day trip to Blacktail Mt.)	\$ _____	_____
<input type="checkbox"/> Other: _____	\$ _____	_____
Total:	\$ _____	_____

Comments (For whom you are paying. Roommate requests,...): _____

Signature(s): _____ Date: _____

Signature(s): _____ Date: _____

NOTE: Ever since COVID hit us, we are not doing any bus trips and are not collecting any money for trips. Instead, everyone now arranges for their own lodging and transportation to our destination. We are getting a group discount on lodging.

See our Trips cancellation policy on our web site: <http://www.mthigh.org/Documents/Trip-Cancellation-Policy.pdf>

Checkmark all desired options.

Club membership = 140 Newsletter Distribution

The January 2025 issue is on our web site. Also:
150 copies sent via email (as PDF file)
0 paper printed copies sent via US Mail.
Copies are also sent to potential members, other clubs, the Mount Hood Museum, etc.

Count Your Ski Areas

Set up your own counter of ski areas visited. Use a modified form of John and Jewel's spreadsheet with 3 added columns, for up to 3 more people. Make one of these your own. Enter a "1" for every ski area visited. See: <http://www.mthigh.org/Documents/North-American-Ski-Areas.xls>

Mt. High Credit Card Payments



You can pay your membership fee and your trip payments by **credit card**. We are processing it through PayPal.

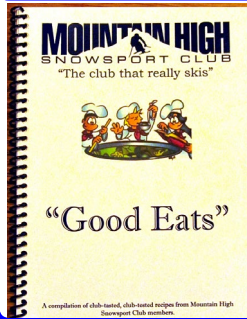
No need to have a PayPal account to make a payment by credit card. Just go to our new web page: "Signup & Pay" at: <http://www.mthigh.org/Signup-Pay.htm>

Videos from Mt. High Archives

Over the years, we have accumulated a lot of interesting videos. Check out some of these:

- * [Ski the Glade Trail Day on Mt. Hood](#)
- * [Sitzmark Ski Area in Washington](#)
- * [Brundage Mt. Snowcat Skiing](#)

Mt. High Cookbook

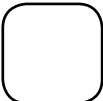
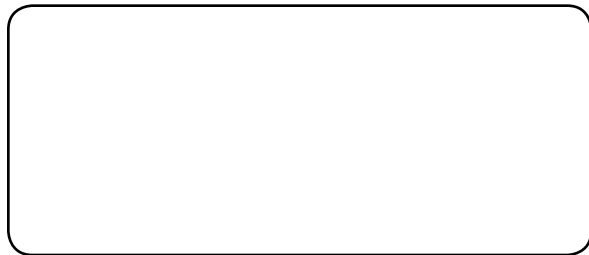


This 34 page cookbook is available for \$10. It has soups, salads, entrees, desserts, from our club members.
The cookbook includes recipes from the late Swiss chef Kurt Mezger. Contact Debbi Kor: ijustwannarun1@comcast.net , or call 503-314-7078.

Stories from Seniors Skiing

A good resource for skiers and riders of all ages. Check out: SeniorsSkiing.com . Subscribe to weekly or monthly emails from them. Click on the Community tab and select "Subscribe". Examples:

- * [Decline of Senior Lift Discounts](#)
- * [Preventing On-Mountain Collisions](#)
- * [SnowVision Prescription Goggles](#)



Emilio Trampuz
Mountain High Newsletter editor
4742 Liberty Rd. S., #296
Salem, OR 97302
Please check our web site,
www.mthigh.org
for updates.