



# Lift Lines

= No. 203, November 2017 =

Mountain High Snowsport Club, PO Box 2182, Portland, OR 97208



## Season Passes rise in price after Nov. 7



Some season passes have already increased in price. Most others will raise their prices within less than a week (after November 7) So, get your pass now. You can purchase the pass online, and you can have your picture taken later.

Which ski pass is right for you depends on where you will be skiing the most, and which other ski areas you might be visiting this winter. See comparison chart on page 2.

## Recreational Racing



If you are interested in some recreational racing, now is the time to join one of our many teams. See our Racing info on page 5.

## Mt. High Cookbook available now!



Debbi Kor has put together our new Mountain High cookbook, with recipes contributed by lots of our club members. It contains dozens of recipes, including deserts. It is available for \$10. We will have some at the **SkiFever Show** at the Expo Center. Or contact Debbi Kor at: [ijustwannarun1@comcast.net](mailto:ijustwannarun1@comcast.net) or call 503-314-7078.

## Renew your club membership - LAST CALL



It's time to renew your club membership. Our membership year starts October 1st and runs till the end of September of the following year.

Annual membership is \$30 for individuals or \$50 per couple.

Please renew in one of 3 ways:

1. **By mail:** Send your check and the [Dough Transmittal form](#) to: Mountain High Snowsport Club, PO Box 2182, Portland, OR 97208.
2. At the **Ski Fever & Snowboard Show**, Expo Center, Nov. 3 - 5. Come to our club's booth there. We will not accept cash there, only checks.
3. At our Welcoming Party, Monday, Nov. 13, starting at 6 pm, at the Round Table Pizza, 10070 SW Barbur Blvd. (near Capitol Hwy), Portland, Oregon.



## Ski Fever Show

Nov. 3 - 5 (Friday - Sunday).  
Come visit our club's booth!  
At the Portland Expo Center.

Note the color code.  
Our club is blue.

## 2017 CALENDAR

**Blue:** Mountain High events  
**Red:** NWSCC / FWSA / Multi-club  
**Black:** General events

### NOVEMBER

**Nov. 3 - 5:** Ski Fever & Snowboard Show at the Expo Center  
**Nov. 4 (Sat):** Mt. Hood Heritage Night  
**Nov. 11 (Sat):** Pray for Snow party  
**Nov. 12 (Sun):** Portland Spirit Brunch Cruise  
**Nov. 13 (Mon):** Mt. High Welcoming Party  
**Nov. 15 (Wed.):** PACRAT 101  
**Nov 27 (Mon):** Mt. High Board meeting

### DECEMBER

**Dec. 1 - 2:** Sandy High Ski Swap  
**Dec. 6 (Wed.):** Winter Fair  
**Dec. 30 (Sat.):** History Happy Hour: Vintage Mt. Hood movie out-takes.

### JANUARY

**Jan. 5 - 7:** Mt. Shasta/ Ashland trip  
**Jan. 15 (Mon):** Rotary day at Meadows (\$15)  
**Jan. 20 - 27:** Okanagan Adventure trip

### FEBRUARY

**Feb. 3 - 10:** FWSA Ski Week - Banff, AB  
**Feb. 21 - 24:** Brundage Mt / A-Lakes trip  
**Feb. 25 - Mar. 4:** FWSA Mini Ski Week: Alyeska

## Lift tickets and Season Passes Comparison

Which option is best for you depends on how much you'll ski. Will you ski enough times at the same ski area to justify a season pass? Note that PACRAT racers will be able to get discounted lift tickets at all 3 ski areas on their race days.

Remember that **Meadows** and **Timberline** will be offering **Spring Passes** valid for March, April and May, for about \$110 - \$140.

**NOTE: All prices will increase November 7. Epic Pass increased October 8. Mt. Bachelor prices increased September 30.**

Ski area / Name of Pass	1 Day	4 or 5 Day	10/12 Days	Season Pass	Senior Season	Season Pass description
<b><u>Mt. Bachelor</u></b> Optionally, add on the M.A.X. Pass to 44 mountains for \$329, offering 19 ski areas in the West and the rest are in the East.	\$92	4-pack \$239 N/A after 9/30	12-day \$599	\$949	\$619	The M.A.X. Pass: 44 mountains, 5 days each, but must be purchased at \$329 on top of the Season Pass price. Prices will increase a lot after Sept. 30.
<b><u>M.A.X. Pass</u></b> 44 mountains, 5 days each, 19 ski areas in the West and the rest are in the East.	--	--	--	\$649	\$649	The 19 western ski areas are: Alyeska, Mt. Bachelor, Big Sky, Boreal, Brighton, Copper Mt., Crested Butte, Crystal Mt., Cypress Mt., Eldora, Lee Canyon, Mountain High, Solitude, Snoqualmie, Winter Park, Kicking Horse, Nakiska, Fernie, Kimberley
<b><u>Mt. Hood Meadows</u></b> Includes 5 free days at Mt. Baker/ Plus 3 days at WinterPark/Steamboat. Plus 25% off day tix @ Big White.	\$80+	5-days \$299	10-days \$409	\$549	\$409	Includes 5 free days at Mt. Baker, 3 days at Steamboat & WinterPark combined. Also 25% off day tickets at Big White. Prices rise \$100 - \$300 after Nov. 7. Free skiing for those over 75
<b><u>Mt. Hood Skibowl</u></b>	\$50	--	--	\$373	\$159	Prices increase Nov. 5, and Nov. 27.
<b><u>Timberline</u></b> (Also see Fusion Pass)	\$71	5-days \$249	10-days \$389	\$449	\$169	Multi-day and season prices will increase after Nov. 5 and Nov. 27.
<b><u>Fusion Pass/Powder Alliance</u></b> Timberline + Skibowl + 3 free tickets at each of: Stevens Pass, Schweitzer, Bridger Bowl, Bogus Basin, Snowbasin, Sierra-at-Tahoe, China Peak, Mountain High, Arizona Snowbowl, Angel Fire, Crested Butte, Silver Star, Whitewater (BC), Kiroro (Japan), La Parva (Chile).	--	--	--	\$549	\$269	Unlimited skiing at Timberline and Skibowl + 41 other free lift tickets, 3 tickets at each of 14 other ski areas.  Not valid on Saturdays. Super seniors (over 71): only \$50. All prices will increase after Nov. 5.
<b><u>Mountain Collective Pass</u></b> 2 lift tickets at each: Taos, Thredbo, Coronet Peak/Remarkables (New Zealand), Whistler/Blackcomb, Jackson Hole, Aspen/Snowmass, Alta/Snowbird, Mammoth Mt., Lake Louise, Sunshine Village, Sun Valley, Stowe, Sugarbush, Squaw/Alpine Meadows, Revelstoke, Snowbasin and Telluride.	--	--	32-time pass \$469	--	--	A 32-time pass, with just 2 days at each of 16 destinations, but additional days at each resort are 50% off. No blackout dates. To make the most of it, visit as many ski areas as possible.
<b><u>Epic Pass</u></b> (Vail Resorts): Unlimited access to: Vail, Beaver Creek, Breckenridge, Keystone, Heavenly, Northstar, Kirkwood, Park City, Arapahoe Basin, Afton Alps, Perisher, Mt. Brighton, and Wilmot.	--	4-day \$449	7-day \$659	season \$879	season \$879	Unlimited access to 16 ski areas. Whistler/Blackcomb has just been added for the 2017/2018 season. No blackout dates. Prices will increase after October 8.
<b><u>Brundage Mt. Passport to Powder</u></b> Unlimited skiing at Brundage Mt., ID, plus 7 free days at Kiroro, Japan, 5 free days at Red Lodge, MT, and Homewood, CA, plus 3 free days at 11 other ski areas. Total of 38 free days.	\$67	--	--	\$569	\$179 for seniors 70+	Includes: Unlimited skiing at Brundage, ID. 7 free days in Kiroro, Japan. 5 days at Red Lodge, MT, & Homewood, CA 3 days at each of: Mission Ridge, WA, Lookout Pass, ID, Snow King, WY, Purgatory, CO, Ski Hesperus, CO, Brian Head, UT, Arizona Snowbowl, Sipapu, NM and Pajarito, NM. \$200 discount if you purchase in Feb/Mar.

Click on the blue, underlined pass name for more detailed info and to purchase it.



**Mt. High booth at the Portland SkiFever & Snowboard Show****Nov. 3 - 5, 2017 (Fri - Sun.)**

The **Northwest Ski Club Council** and **SkiFever & Snowboard Show** have joined forces to kick off the winter ski season for this 38th annual event.

**SkiFever** packs the entire ski & snowboard universe all under one roof™. With 108,000 square feet of exhibition space,

SkiFever provides live acts, interactive exhibits and ongoing giveaways that provide visitors with non-stop entertainment. Enjoy the **SkiFever BrewFest**, with beer from Deschutes Brewery, **Oregon WineFest**, and regional spirits.

**Save big.** Up to 70% off on top brand gear, clothing and accessories!

**Films: Come see the most exciting new ski films: Lite Years & Habit.**

1. **Lite Years:** 7pm, Friday, Nov 3rd .
2. **Habit:** 7pm, Saturday, Nov 4th.

**Buy, Sell & Save.** Save up to 70% on new ski & snowboard equipment. Sell your own gear at the

giant ski swap and keep 80% of the selling price. Get 2-for-1 lift tickets to local ski areas. And much more.

**Come visit the Mountain High club's booth!**

**Our club**, just like all the other NWSCC ski clubs, will have a 10 x 10 display space at the Show. It will be our home for the 3 days of the SkiFever, November 3 -5, 2017 (Friday, Saturday, Sunday) at the Portland Expo Center,

You can come to our booth and **re-new your club membership, sign up for trips, and find out more about our club.** Pay by check, not cash.

**We will need several volunteers to take on a 3-hour shift staffing our booth. All volunteers will receive a free entry to the Show.**

Volunteers, please contact **Karen Michels**, and tell her which day and what time of day would work best for you. Reach Karen at: [skiklynn@gmail.com](mailto:skiklynn@gmail.com) or 503-984-9210.

**Location:** Portland Expo Center,  
2060 N. Marine Dr., Portland, OR.

**Mt. Hood Heritage Night**

**November 4**  
(Saturday) 6 - 9 pm.

Annual Heritage Night at the Museum & Cultural Center in Government Camp

This is a fun evening to support the museum. Silent auction, Oral auction, awards, music, hosted libations, hors d' oeuvres and more.

Auction highlights include local art, collectibles, winter sports gear, event tickets, gift baskets and even an 8-foot long United Trailer. Come join the fun.

Call the museum if you have any auction items to donate. Call: 503-272-3301.

More info at: <https://mthoodmuseum.org/event/heritage-night-museum/>

**Mt. High Portland Spirit Brunch Cruise**

**November 12 (Sunday)**

Time: Noon - 2 pm.

Cost: \$46 per person.

A 2-hour afternoon Brunch Cruise on the Portland Spirit.

Join your fellow club members and enjoy a wonderful Sunday Brunch, filled with tasty seafood, and lots of other yummy treats. We'll board the Spirit at 11:30 am., and cruise the Willamette for 2 hours, taking in the sights and sounds of the Portland river front.

**RSVP** no later than November 8, to Debbi Kor at: [ijustwannarun1@comcast.net](mailto:ijustwannarun1@comcast.net) or call 503-314-7078.

This is a Sunday Brunch Cruise, It includes champagne, and a rich brunch buffet. More info at: <http://www.portlandspirit.com/spirtech.php>

**UPDATE: To join us, bring \$46 per person to the cruise on the day of the event. At this late date, don't send your payment to the club. Pay in person, but please RSVP to Debbi Kor right now.**

## MOUNTAIN HIGH

## Upcoming Events

## SNOWSPORT CLUB

## Schnee Vogeli (Snow birds)

## Pray for Snow party



**Nov. 11 (Saturday.)**

Starting at 7:00 pm

Organized by the Schnee Vogeli club. Everyone is invited! Limited space!

**Location:** Charlie's Pub in Government Camp.

Come celebrate the upcoming winter. Live music, and door-prizes. All local skiers and riders are invited, regardless of which club they belong to.

There will be a live band, the Hit Machine. See the band at [www.HitMachineBand.com](http://www.HitMachineBand.com).

Tickets are \$15. Sold in advance (not at the door). Tickets always sell out completely before the event. For tickets, contact your favorite member of the Schnee Vogeli club, or one of the following:

**Gordy Lusk**, 503-804-8363 [GordyLusk@hotmail.com](mailto:GordyLusk@hotmail.com), or

**Dale Parshall**, 503-245-3782, [DaleParshall@comcast.net](mailto:DaleParshall@comcast.net).

## Mt. High

## Mt. High Welcoming Party



**November 13 (Monday) - 6:00 pm**

**New members** will get a good introduction to what our club is all about. Hear about our trips, racing, social events, and see a short video about our club.

**For potential new members**, come check out our club and hear about all the fun stuff we do year round. We will have trip leaders and board members present to answer all your questions.

**For current club members**, this is a great chance to bring a friend that might be interested in checking us out. It is also a great opportunity to share your

experiences in the club with newcomers. The club will provide pizza and entertainment.

**Place:** Round Table Pizza, 10070 SW Barbur Blvd. (near Capitol Hwy), Portland, Oregon. See our web site for directions. [http://www.mthigh.org/#Mt. High Welcoming Party](http://www.mthigh.org/#Mt._High_Welcoming_Party)

Pizza is on the club! Just buy your own drink.

**If you are relatively new to the club, please come!**

All **new members** and **potential new members** are invited! Come meet other members, check out what's new. Bring a friend! Enjoy some "Maui Zau" pizza! For any **long-term members** planning to attend, this will be your chance to buddy-up with some "newbies" and share some of your own experiences with the club.

Please RSVP to: **Karen Michels**, [skiklynn@gmail.com](mailto:skiklynn@gmail.com) or 503-984-9210.



## Sandy Ski Swap + Warren Miller movie

**Dec. 1 and 2.** (Friday and Saturday) - FREE ADMISSION. **Friday:** 5 pm - 9 pm. **Sat.:** 10 am - 7 pm.

**Ski and Snowsports Swap & Sale.** Come and do some shopping before the movie and during the 30 minute intermission. There will be lots of new and used ski and snowsports equipment and clothing at great prices! See more at: <https://sandyskiteam.schoolauction.net/2017/>.

Then, see the latest **WARREN MILLER movie** Show times: 6:30 pm December 1st & 2nd. Tickets \$20 (a limited number available at the door).

**Location:** New Sandy High School Auditorium, Sandy, Oregon.





## Speed Racers Corner

Edited by Alan Bean  
Mountain High Racing Director  
503-849-8009 or [Racing@mthigh.org](mailto:Racing@mthigh.org)



### PACRAT News

#### Pacific NW Area Clubs Recreational Alpine Teams



**Alan Bean**  
Mt. High Racing Director

Hello fellow riders, I would like to invite all folks that are curious or interested in finding out more about how this team racing works to contact me via the club e-mail: [racing@mthigh.org](mailto:racing@mthigh.org).

We want to encourage both temporarily retired racers and new potential racers that have even the slightest curiosity to attend our annual informational meeting being held at **Hillcrest Ski & Sports** on **November 15 at 6 pm**. This night is centered around information and recruiting of interested riders and this year we

are joining forces to have a great door prize drawings including a season pass. Existing captains get two raffle tickets and everyone gets at least one just for attending. Hillcrest Sports is awesome and there will be free pizza.

Don't count yourself out of this **great social activity** we call PACRAT Racing just because you have never ran a recreational race course. Our highest scoring racers every year are those that have never raced before. Racing is easy, is set on moderate slopes, and at natural turning radius of about 18 meters. We are especially interested in reaching out to snowboarders looking for a new challenge and we hope to find a couple of well connected boarders to help form majority snowboarder teams; all Mt High teams are co-ed and consist of 10 riders (I should mention that snowboarders get an automatic 15% reduction of time to even the playing field.)

**Captains** - this is a good time to start checking in with last years teammates and reaching out to prospective ringers (first time racers). For any and all prior racers: While we discourage captains from directly recruiting from other teams, we do want everyone to not feel like you have to race for the same team year in and year out. So every individual racer should feel free to contact existing teams you would like to race with or to let me know at the above e-mail address your desire to become a free agent or volunteer to captain a new team and I'll assist in that endeavor. Go ahead and find your gang that feels best racing with. I see my primary job duties here as facilitating forming new teams and helping complete existing teams.

There are always teams in desperate need of **new racers** and we have all flavors of teams, so drop me a note and let me know what's on your mind.

Go Speed Racer Go !!

### NWSCC / PACRAT 101 Evening

**November 15** (Wednesday) 6:00 - 8:30 pm.

Come learn more about PACRAT racing. There will be door prizes. And there will be free pizza!

For racers, this is a recruitment and education class, open to everyone. Bring friends who might be interested in racing! Find out what's new for this racing season.

**Location: Hillcrest Ski & Sports** - 2506 SE Burnside Rd, Gresham, OR 97080.

See more details at: [http://www.pacrats.org/files/event\\_flyers/2017%20PACRAT%20101%20Flyer.pdf](http://www.pacrats.org/files/event_flyers/2017%20PACRAT%20101%20Flyer.pdf)

### 2017 race dates

**Jan. 7: NASTAR Open race #1 - Skibowl**

Jan. 21: PACRAT Race 1 - Skibowl

Jan. 28: PACRAT Race 2 - Meadows

Feb. 11: PACRAT Race 3 - Skibowl

**Feb. 25: NASTAR Open race #2 - Skibowl**

**Mar. 3-4: Masters races - Skibowl**

Mar. 11: PACRAT Race 4 - Meadows

Mar. 18: PACRAT Race 5 - Timberline

Mar. 25: **NASTAR Championships at Squaw**, and possible alt. Pacrat makeup date

Apr. 8: PACRAT Makeup race - Timberline

Apr. 13: PACRAT Rat Attack awards dinner.

For more info, see the PACRATS web site: [www.pacrats.org](http://www.pacrats.org), or our RACING EVENTS page: [www.mthigh.org/Racing\\_Events.htm](http://www.mthigh.org/Racing_Events.htm)

### PACRAT and NASTAR Races

**PACRAT** races require that you join a 10-person team and commit for the winter season. It costs \$110 and it includes 5 races, 5 parties with food and drinks, plus an end of season awards dinner.

**NASTAR** races are open to all. Anyone can simply show up and try it. See how it feels. It costs \$10 for 2 runs, or \$20 for unlimited runs.

## MOUNTAIN HIGH

## Upcoming Events

## SNOWSPORT CLUB

## NWSCC

## Winter Fair



**Dec. 6** (Wednesday)

Starting at 6:30 pm

This is an event for all the local ski clubs.

See [Google Map](#) for location.

**Location:** Lucky Labrador Public House, 7675 SW Capitol Hwy., Portland.

Mark your calendar for Wednesday evening, December 6, when NWSCC will host a new event: **Winter Fair**. This will be a meet and greet event with club members, industry members, a big **silent auction** (think Christmas shopping for ski-related items!), as well as honoring NWSCC's new Man and Woman of the Year. Further details TBA.

There will be a Silent Auction with many valuable items offered.

## Mt. High

## Christmas Ships Parade

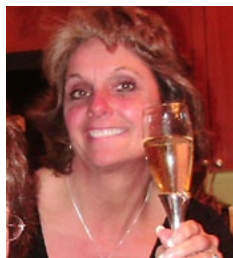


**December 19, 2017** (Tuesday) - 6 pm

We'll gather at **Joe's Crab Shack**, on the Columbia River (just across the Interstate Bridge, on the Vancouver side) to watch the Christmas Ships.

**Location:**

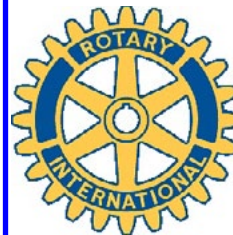
Joe's Crab Shack,  
101 Columbia Way  
Vancouver WA  
Ph.: 360-693-9211.



We'll have some tables staked out, beginning around 6:00 p.m. The ships are due to arrive around 7:45, so come for drinks, stay for dinner and enjoy the evening with your fellow Mt. Highers.

Please RSVP. Contact: **Debbi Kor**, 503-314-7078,  
[ijustwannarun1@comcast.net](mailto:ijustwannarun1@comcast.net)

## \$15 Rotary Day at Meadows



**January 15, 2018**  
(Monday) 2 - 9 pm

This is on Martin Luther King's Day, which is a holiday for many of us.

**Mt. Hood Meadows** will be selling lift tickets, valid e from 2 pm till 9 pm for just \$15 if purchased online on the Meadows web site, or \$20 on the day of the event.

This is a fund-raiser for Hood River Rotary Club.

You can't bat that price. So, come and enjoy some inexpensive skiing for a good cause.

## NWSCC

## Bachelor Blast



**April 6 - 8, 2018.** (Friday - Sunday)

A drive-to or carpooling trip.

Two days of skiing and two nights lodging.

News Flash! NWSCC just announced it has scheduled a Bachelor Blast trip for April 6-8, 2018, staying in downtown Bend at two Marriott properties: the **Fairfield Inn** and **Townplace Suites**.

April 6 is First Friday in Bend, so come over in time to enjoy the event!

Further details will be provided soon. Check the NWSCC website for details. [www.nwskiers.org](http://www.nwskiers.org)

All members of all clubs are invited!!

**Cost = \$285** per person, double occupancy. Price reductions for Seniors, Super Seniors, and Youths.



## Mt. High

## Weekend bus trip to Mt. Shasta &amp; Mt. Ashland



## Mt. Shasta+ Mt. Ashland

**January 5 - 7, 2018 (Friday - Sunday) - 2 days/ 2 nights.**

2 nights / 2 days skiing.

Saturday at: Mt. Shasta

Sunday at: Mt. Ashland



No need to pack and move every day. We'll stay in the same hotel both nights. The hotel has a hot tub and indoor swimming pool. It also has free Wi-Fi and free continental breakfast. All rooms have a hair-dryer, coffee-maker, microwave and refrigerator, and ultra-fast internet.

We'll start the trip on Friday at **2 pm** and just ride the bus to Ashland.

**Lodging:** We'll stay at the **Stratford Inn**, near downtown Ashland. It is within walking distance of most downtown restaurants.

**On Saturday**, we'll drive a little over an hour to Mt. Shasta ski area, offering 3 lifts on 3 separate hills.

**On Sunday**, we'll ski at nearby Mt. Ashland. We'll ski till 3 pm, and then ride the bus back home. We'll return to Portland around 9 pm on Sunday.

TENTATIVE, BALLPARK PRICES (Firm price will be announced soon).

<b>Price:</b>	Adults	= \$300 per person
	Seniors (65+)	= \$290
	Super-Seniors (70+)	= \$260
	No lift tickets	= \$248

Price includes all bus transportation, 2 nights lodging, and 2 lift tickets, and a dinner.

The free continental breakfast includes a "make your own bowl" yogurt breakfast bar, fruit juices, coffee, an assortment of teas, bagels, whole-wheat bread, cereal and oatmeal. There is also an in-house coffee shop.

Space is limited by the size of the bus. Also, this trip is open to members of other clubs as well, so please sign up early!

**To reserve your spot:** Please send in a deposit check of \$100 per person, preferably by November 15, 2017.

Full payment due by **December 1, 2017**. No refunds after December 1, unless you can fill your spot. See our Mt. High [Trip Cancellation Policy](#) (on our web site, FORMS & DOCS page)

Please use the [Dough Transmittal form](#) on the Forms & Docs page on our web site. Make check payable to Mountain High Snowsport Club, and mail it to:

Mountain High, PO Box 2182, Portland, OR 97208

Contact: trip leader **Emilio Trampuz**, 503-378-0171, [Emilio2000@earthlink.net](mailto:Emilio2000@earthlink.net)



**Mt. Shasta**



**Mt. Ashland**



**Mt. Ashland**

More ski trips info at: [www.mthigh.org/Trips.htm](http://www.mthigh.org/Trips.htm).

## Mt. High

## Okanagan Adventure (BC, Canada)



## Sun Peaks + Silver Star

**NOTE: Passport required!**

January 20 - 27, 2018 - 7 night trip.

We will stay ON MOUNTAIN at both resorts with easy access to all village amenities. Full trip price includes: round trip charter bus transportation, 7 nights lodging, 3 Silver Star lift tickets, 2 Sun Peaks lift tickets and several meals. FYI: Silver Star is part of the Powder Alliance and if you have the local Fusion Pass for Timberline/Skibowl you get three free tickets to Silver Star. Fusion pricing is lower as it takes into account those three free lift tickets. In addition, you can customize your trip with an optional lodging upgrade (limited availability) or adjusting the number of lift tickets you want.



Sun Peaks

At **Sun Peaks**, we will stay in traditional hotel rooms at the **Sun Peaks Lodge** with TWO people per room. Rooms have QQ or K setup.

At **Silver Star**, we will stay in two bedroom condos at **Chilcoot Lodge** with FOUR people in each condo. Room #1 QQ, room #2 Q + twin bunks. Each unit has two bathrooms. There is a kitchen and a living room with a pullout sofa in each condo that will be shared by all four. There will also be a limited number of two bedroom condos at **Snowbird Lodge** in Silver Star resort for those that want to upgrade. Room #1 K, room #2 K or T/T and there is a pull out in the living room. The units also have three bathrooms and a PRIVATE HOT TUB on the deck. The Snowbird Lodge units are first come, first serve by request with deposit and I will only place pre-arranged groups in them. To upgrade to the Snowbird Lodge, please add \$100 to the trip price.

**Silver Star** is located about 12 miles from Vernon in the heart of the Okanagan region and is the 3rd largest in British Columbia. It offers both Nordic and downhill options. It is known for champagne powder and averages over 23 feet of snowfall each year. Silver Star has over 3200 acres of downhill skiing, 11 lifts and 132 runs with 15% easiest, 40% intermediate, 35% most difficult and 10% extreme. If you want to take a day off from skiing at Silver Star, there are tons of optional activities to enjoy including: fat biking, tubing, snowshoeing, ice skating and shopping. Check it all out at [www.Skisilverstar.com](http://www.Skisilverstar.com).

**Sun Peaks** is located about 35 miles from Kamloops, British Columbia. It is the 2nd largest resort in British Columbia and averages over 20 feet of snowfall annually. They boast 12 chairlifts and 2800 feet of vertical for downhill skiers and almost 25 miles of groomed and track-set trails with optional lift access via Morrissey express for Nordic skiers. They have over 4200 acres of terrain with 10% beginner, 58% intermediate and 32% expert. In addition, they offer optional snowmobiling, sleigh rides, ice skating, tubing and snowshoeing. Check it out at [www.Sunpeaksresort.com](http://www.Sunpeaksresort.com).

We hope you join us for this exciting trip. **Reserve your spot now with a 250.00 deposit!!!**

**October 15th 2017** is the cancel date for this trip. After October 15th, you will only receive a full refund if we can fill your spot. Full payment is due October 15th. See our Mt. High [Trip Cancellation Policy](#).

Fusion resorts have not been finalized for 2017/18 but Silver Star is expected to continue in the alliance.

<b>Prices:</b>	Adult	1099.00
	Senior	1045.00
	Fusion	899.00
	Senior fusion	880.00
	Nordic	810.00
	Non-skier	770.00

**Update**

This trip is now full. But you can get on the waiting list by contacting Karen.

Upgrade to Snowbird Lodge at Silver Star: Add \$100.



Please use the [Dough Transmittal form](#) on the Forms & Docs page on our web site. Make check payable to Mountain High Snowsport Club, and mail it to: Mountain High, PO Box 2182, Portland, OR 97208

Contact trip leaders: **Karen Michels:** [skiklynn@gmail.com](mailto:skiklynn@gmail.com)

**Bill King:** [willie2k@ymail.com](mailto:willie2k@ymail.com)

More ski trips info at: [www.mthigh.org/Trips.htm](http://www.mthigh.org/Trips.htm).



## Mt. High

## Brundage Mt. bus trip



## Brundage Mt.+ Anthony Lakes

**Feb. 21 - 24, 2018 (Wednesday - Saturday) - 3 days/ 3 nights.**

We will stay 2 nights in McCall, Idaho and one night in Baker City, OR.

Wednesday = Travel day. Ride the bus to McCall, Idaho.

Thursday = Ski Brundage or go Snowcat skiing (optional).

Friday = Ski Brundage.

Saturday = Ski Anthony Lakes and then drive straight home.

Return home by Saturday night.

(PACRAT racers can then participate in the NASTAR race on Sunday.)

**Brundage Mt., ID** is located just 8 miles from McCall, Idaho. It offers some of the best snow in Idaho, a vertical of 1,921', and 1920 skiable acres, served by 5 lifts: 1 hi-speed quad, and 4 triples. It has 46 named trails, plus lots of glades

**Brundage Mt. Snowcat Adventures** offers an additional 18,000 acres accessible by snowcat. On our trip, you can sign up for an optional day of **snowcat skiing** on our first day (Thursday) for an additional \$275.

**Anthony Lakes, OR** has the highest base elevation in Oregon, at 7,100', ensuring a high quality, dry snow. It offers 1,100 acres and 900 vertical feet. Good snow on good terrain keeps us returning to this ski area again and again.

<b>Prices:</b>	1. Adult full price	= \$435	<b>OPTIONAL:</b> Snowcat skiing day = \$275 extra.
	2. Senior full price (70 and over)	= \$365	
	3. Nordic full price (regular & senior)	= \$TBA	
	4. Base Price without any lift tickets	= \$310	

Price includes all bus transportation, 3 nights lodging, and 3 lift tickets. The trip also includes: 1 dinner, 1 motel breakfast, and 2 restaurant meals on the way from and to Portland.

To reserve your spot: Please send in a deposit check of **\$150** per person.

Full payment due by January 15, 2018. No refunds after January 15 unless you can fill your spot. See our Mt. High [Trip Cancellation Policy](#) (on our web site, FORMS & DOCS page).

Please use the [Dough Transmittal form](#) on the Forms & Docs page on our web site, or on the next to last page in our newsletter. Make check payable to Mountain High Snowsport Club, and mail it to: Mountain High, PO Box 2182, Portland, OR 97208

Contact: trip leader **Linda McGavin** (trip leader) at 503-652-2840, [Trips@mthigh.org](mailto:Trips@mthigh.org)



**Brundage Mt.**



**Anthony Lakes**  
(Oregon)

More ski trips info at: [www.mthigh.org/Trips.htm](http://www.mthigh.org/Trips.htm).

FWSA

## FWSA Ski Week in Banff, Alberta, Canada



## Lake Louise + Sunshine Village + Mt. Norquay

February 3 - 10, 2018

Annual ski week organized by the Far West Ski Association.

Join us for a week of skiing and partying in beautiful Banff, skiing Lake Louise, Sunshine, and Norquay on one lift ticket. Reserve your spot by making a \$150 deposit now! Lodging preferences will be granted by date of received deposit & sign-up sheet.

See the latest [trip flyer](#) on the NWSCC web site.

Lodging will be in two adjacent hotels. Your choice:



**Banff Park Lodge** (restaurant on premises) Well-located property close to shopping, restaurants, ski buses, and activities

3 rooms with 1 King bed **SPACE FOR 1 MAN AVAILABLE**

9 rooms with 2 Queen beds

Package Price: \$979 per person (without parking)

Fee to park \$10.50 - \$15.75/night

**Bow View Lodge** located just behind the Banff Park Lodge, sharing amenities with the Banff Park Lodge. **THIS LODGE IS NOW FULL.**

Available rooms are:

2 rooms with 1 Queen + 1 Twin beds

2 rooms with 2 double beds

Package Price: \$879 per person

Free outdoor parking

**Lodging and Amenities Package** per person includes:

7 nights lodging (double occupancy per bedroom)

Welcome Party at Banff Park Lodge

Mountain Tour

NWSCC Council Night Dinner at Balkan Restaurant

Mountain Picnic at Lake Louise (for skiers & riders)

Racing

Banquet with Dancing at Banff Springs hotel

Après Ski Party & Race Awards at Banff Park Lodge

**Not included:** Price does NOT include lift tickets, nor air or ground transportation. You are free to make your own transportation arrangements, using frequent flyer programs.

**Lift Tickets cost extra:**

1. Adults: 5-day = \$292, 6-day = \$345

2. Seniors (65+): 5-day = \$263, 6-day = \$310

3. Mountain Collective Pass valid for 2 days each at Sunshine Village and Lake Louise, plus at several other resorts (but not at Mt. Norquay), costs \$469.

More info: <http://www.fwsa.org/Travel/NAski/naski.html> Questions? Contact [travel@nwskiers.org](mailto:travel@nwskiers.org)

**How to Sign Up**

1. Print and fill out the [sign up form](#). It is on page 3 of the PDF file which also contains a flyer.

2. Make your check payable to: **Northwest Ski Club Council.**

3. Mail should be addressed to: NWSCC | Banff Trip  
Box 438, 5331 SW Macadam Ave., Suite 258  
Portland, OR 97239



## UPDATE

There is now only one spot available for a man in the Banff Park Lodge. Cost \$979..

Or contact [travel@nwskiers.org](mailto:travel@nwskiers.org) to get on a waiting list.

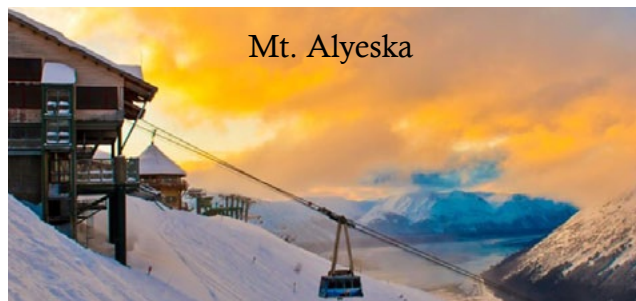


FWSA

## Mini Ski Week - Alaska Iditarod + Mt. Alyeska



## Alaska Iditarod + Ski &amp; Snowboard Mt. Alyeska



Mt. Alyeska

February 25 - March 4, 2018

A trip to Alaska.

Mt. Alyeska, 40 miles south of Anchorage, offers:

Vertical = 2,500 feet

Acreage = 1,610 acres

9 lifts: 2 high speed detachable quad,  
2 fixed quads, 2 doubles, 2 magic carpets,  
1 60-passenger Aerial Tram

**Price:** from \$1,130 to \$1,410 (Does not include Air or transportation from the airport.)

**Included:** 7 nights lodging at Hotel Alyeska (ski-in/ski-out) and at Hotel Captain Cook in Anchorage, plus:

- ~ Welcome Party
- ~ Farewell Dinner Party
- ~ Lift Tickets
- ~ The Northern Lights
- ~ Iditarod Events
- ~ Fur Rendezvous

**Contact:** Gloria Raminha [garski2011@gmail.com](mailto:garski2011@gmail.com)

Trip Leader

12707 Windy Ridge Dr., Bakersfield, CA 93312

661-800-8229 [C]

661-829-5996 [H/F]

Trip details: <http://www.fwsa.org/Travel/NAski/2018-FWSA-Alaska/2018-FWSA-Alaska.html>

## Chairlift signs at Sun Peaks, B.C.

Here are a couple of signs we found on a previous club trip to Sun Peaks. They were attached to the chairlift safety bars. One is amusing. The other is

a safety message.



We are going to Sun Peaks again this winter! It's part of the Okanagan Adventure. See page 8.



**FWSA FWSA International France Trip 2018 - Les Trois Vallées / Brides les Bains**

**March 4-11, 2018** (SFO & LAX Group Air departs Mar. 3rd) Far West Ski Association's international trip. Plus an optional trip extension or Stand Alone trip to Lyon, Beaune & Paris: March 11-18, 2018.

**Les Trois Vallées** (The Three Valleys) is a ski region in the Tarentaise Valley, Savoie, south of the town of Moûtiers, partly in the Vanoise National Park. Since 1973, it has been possible to ski the interlinked valleys using a single ski pass. Thus, Les Trois Vallées is **the largest ski area in the world** which is connected solely by ski lifts and slopes. It claims to have about 370 miles of ski slopes. Les Trois Vallées has 183 ski lifts, which can transport 260,000 skiers per hour. There are 424 ski patrollers and 1,500 ski instructors. Les Trois Vallées are home to eight ski resorts that are linked together by a unique network of ski lifts and ski runs. The resorts and villages lower down in the valley should also be added to these: Brides-les-Bains is a spa resort that is linked by cable car to Méribel which provides easy access to the ski area.

**Land Package - The Mercure Grand Hotel des Thermes in Brides les Bains.** (Not including air transportation)

- Approximate lodging package costs - **\$1517.00 – \$1730.00** pp Dbl. Occupancy
- Upgraded rooms, Single Supplement rooms and Suite rooms are available – quantities are limited.

**Land Package** includes:

- All airport ground transfers with Multi-lingual guide meeting the FWSA Group Air people upon arrival
- 7 nights accommodations with breakfast daily and Free Wi-Fi throughout the hotel
- Daily Breakfast, 5 Dinners at the hotel – 2 nights on your own to dine at the local French restaurants of your choice.
- Welcome/Orientation and Farewell Party; Transportation for “Night on the Town” in Meribel
- Gratuities to bus drivers, transfer guides and restaurant staff
- Après ski party – details to be provided
- Optional day tour – details to be provided

**Air Transportation Information:**

- Estimated SFO & LAX air = \$927.00 - \$1030.00
- Stand Alone Trip Air will be booked individually – contact Debbie Stewart for price quote.

(We're happy to book an alternate airport and/or a deviation to extend your trip for you - they are limited)

\*Air prices DO include estimated Fuel surcharges, Taxes and current Exchange Rate – subject to change.

**It is HIGHLY recommended to use FWSA air transportation!**

If you arrange your OWN flights but wish to take the FWSA bus transfers, you must coordinate your flight schedule with the FWSA group air schedule. No special alternate pick up or drop off by the bus will be permitted.

**Brides les Bains Lodging/Land Package Information:**

The Brides les Bains land package pricing is based on a minimum of 64 people and the Extension pricing is based on a minimum of 34 people – subject to change if requirements are not met. All local taxes are included.

The pricing is based on the Exchange Rate of 1.08 US Dollar vs.1 Euro – subject to change.

**Make checks out to: Far West Ski Association (FWSA).** Please reference “FWSA 2018 FRANCE Trip” on each check. **Send to:** Debbie Stewart, FWSA VP of International Travel, 430 S. Church St., Visalia, CA 93277, [FwsaIntlTrvl@prodigy.net](mailto:FwsaIntlTrvl@prodigy.net) or cell: 559/737-0882 (CST # 2036983-40).

**Optional Extension to Lyon, Beaune & Paris, France:** March 11-18, 2018

Approximate Land Package – Double Occ. = **\$1595.00** pp





## MOUNTAIN HIGH

## Contacts / Club info

## SNOWSPORT CLUB

## Man &amp; Woman of the Year



**Nancy Pratt**, is our club's best Treasurer so far. She processes all our payments for membership, trips, racing, and provides timely reports to trip leaders and to our racing director.



**Alan Bean**, our Racing Director, coordinates all our teams, helps place new racers, and has been writing the Speed Racers' column in Lift Lines.

## Mountain High Meeting

Usually last Monday.

**November 27 (Mon.):** Open to all who want to get involved with the club. Gather at **6 pm.** Start at **6:30 pm.** **Location:** Round Table Pizza, 10070 SW Barbur Blvd. (near Capitol Hwy.)

## Mountain High snowsport club contacts:

**President:** Debbi Kor H: 503-314-7078,  
**Vice-President:** Bill King H: 614-371-4762  
**Secretary:** Debbie Geiger H: 971-716-9949,  
**Treasurer:** Nancy Pratt H: 503-593-9427,  
**Past President:** Kurt Krueger H: 503-625-1492,  
**Membership Director:** Karen Michels H: 503-984-9210,  
**Racing Director:** Alan Bean H: 503-849-8009,  
**Newsletter Editor:** Emilio Trampuz H: 1-503-378-0171,  
**Social Activities:** Debbi Kor H: 503-314-7078,  
**Trips Director:** Linda McGavin H: 503-652-2840,  
**Bike rides:** Jackie Bonillo H: 503-663-3359,  
**Mid-week skiing:** Ken Brundidge H: 503-720-0620,

[President@mthigh.org](mailto:President@mthigh.org)  
[willie2k@ymail.com](mailto:willie2k@ymail.com)  
[pdxdobbie@gmail.com](mailto:pdxdobbie@gmail.com)  
[Treasurer@mthigh.org](mailto:Treasurer@mthigh.org)  
[PastPresident@mthigh.org](mailto:PastPresident@mthigh.org)  
[skiklynn@gmail.com](mailto:skiklynn@gmail.com)  
[Racing@mthigh.org](mailto:Racing@mthigh.org)  
[newsletter@mthigh.org](mailto:newsletter@mthigh.org)  
[ijustwannarun1@comcast.net](mailto:ijustwannarun1@comcast.net)  
[Trips@mthigh.org](mailto:Trips@mthigh.org)  
[jbon1960@comcast.net](mailto:jbon1960@comcast.net)  
[KenBrundidge@comcast.net](mailto:KenBrundidge@comcast.net)

General info:  
[info@mthigh.org](mailto:info@mthigh.org)

Web site:  
[www.mthigh.org](http://www.mthigh.org)

## DOUGH TRANSMITTAL FORM

Mail check payable to: Mountain High Snowsport Club, PO Box 2182, Portland, OR 97208.

PLEASE PRINT CLEARLY: ☐ New membership or ☐ Renewal

Name(s): \_\_\_\_\_ Birthday (MM/DD) \_\_\_\_\_

Address: \_\_\_\_\_

Phone (Hm): \_\_\_\_\_ Phone (Wk): \_\_\_\_\_

Email (Hm): \_\_\_\_\_ Email (Wk): \_\_\_\_\_

**Email Preferences:** - Newsletter (once a month): ☐ yes, link only ☐ yes, complete file ☐ no  
☐ No changes - Club news & events (between newsletters): ☐ yes ☐ no  
 (same as last year) - Other ski news (NWSCC, FWSA, ski areas, trips...): ☐ yes ☐ no  
 - Is it OK to share your email address with other club members? ☐ Yes ☐ No

I certify that I am 21 years of age or more. I acknowledge that I am responsible for my own safety and conduct. I hereby agree to be bound by all Mountain High Snowsport Club bylaws and regulations, including the Trip Cancellation Policy. I hereby release Mountain High Snowsport Club, and any of their agents (officers, directors, trip captains, and any other Club representatives) from liability for personal injury, property damage, or any other liability of any kind connected with my participation in any club-related activity. Furthermore, I agree to indemnify and hold the Club and any of their agents harmless from any and all liabilities of any kind which may be incurred or asserted against the Club or any of their agents in any way relating to my negligence or willful misconduct connected with my participation in the club's activities.

Please take my money, and apply it toward the following Ski Club fun stuff:

	Deposit?	Paid in full?
<input type="checkbox"/> <b>Annual Membership</b> (Oct. 1, 2016 - Sept. 2017): Single (\$30); couple (\$50)	\$ _____	_____
<input type="checkbox"/> <b>PACRAT Racing (2018)</b> \$110 for the whole season. Team: _____	\$ _____	_____
<input type="checkbox"/> <b>Mt. Shasta trip</b> (Jan. 5-7, 2018). Deposit = \$100.		
Prices: Adult=\$300, Senior(65+)= \$290, Super senior(70+)= \$260, w/o lift tix=\$248.	\$ _____	_____
<input type="checkbox"/> <b>Okanagan Adventure - Canada</b> (Jan. 20 - 27, 2018) Deposit = \$250.	\$ _____	_____
* Snowbird Lodge upgrade ... Add \$100.	\$ _____	_____
* Extra lift ticket at Silver Star (instead of rest day) = Adult \$65. Senior=\$52.	\$ _____	_____
<input type="checkbox"/> <b>Brundage Mt. trip</b> (Feb. 21-24, 2018). Deposit = \$150. Total = \$435 or less.	\$ _____	_____
* Snowcat skiing (optional) ... Add \$275.	\$ _____	_____
<input type="checkbox"/> <b>Other:</b> _____	\$ _____	_____
<b>Total:</b>	\$ _____	_____

Comments (For whom you are paying. Roommate requests,...): \_\_\_\_\_

Signature(s): \_\_\_\_\_ Date: \_\_\_\_\_

Signature(s): \_\_\_\_\_ Date: \_\_\_\_\_

See our Trips cancellation policy on our web site: <http://www.mthigh.org/Documents/Trip-Cancellation-Policy.pdf>

Checkmark all desired options.

### Club membership = 250      Newsletter Distribution

The November 2017 issue is posted on our web site. Also:  
**258** copies sent via email (as PDF files)  
**16** paper printed copies sent via US Mail.  
 Copies are also sent to potential members, other clubs,  
 the National Ski Club Newsletter, etc.

## FWSA Athletic Scholarship Fund

### We are now sponsoring Cassell Lefevre

Cassell Lefevre, age 16, is from Hood River, Oregon and skis for the **Mt. Hood Race Team**. He is also an avid mountain biker and road cyclist. Last season he had 1 podium and 7 top ten finishes in ski racing. He is currently ranked #1 in Downhill, #12 in Slalom, #16 in GS and #9 in Super G for the USSA Pacific Northwest Division in his age group.



<http://casselllefevre.wixsite.com/skiring>

## Count Your Ski Areas

Set up your own counter of ski areas visited. Use a modified form of John and Jewel's spreadsheet with 3 added columns, for up to 3 more people. Make one of these your own. Enter a "1" for every ski area visited. See: <http://www.mthigh.org/Documents/North-American-Ski-Areas-2017-03-16.xls>

## Seniors Skiing

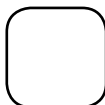
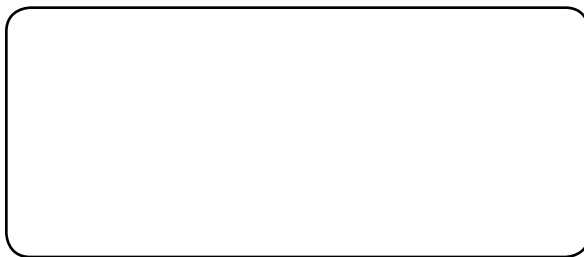
Here's another good resource for skiers and riders. Check out: [SeniorsSkiing.com](http://SeniorsSkiing.com).

The title is "Seniors Skiing", but there is tons of information here of interest to people of all ages.

Here are some examples:

- \* **Shape Up: How to Get Fit for Ski Season**
- \* **A Special Gift Idea: Eat a Tree**
- \* **Johannes Von Trapp: Climbing Every Mtn.**
- \* **Nostalgia: Remember When?**
- \* **The Top All-Mountain Skis of All Time**

You can subscribe to weekly or monthly emails from Seniors Skiing by clicking on the Community tab and then selecting "Subscribe".



Emilio Trampuz  
 Mountain High Newsletter editor  
 4742 Liberty Rd. S., #296  
 Salem, OR 97302  
 Please check our web site,  
[www.mthigh.org](http://www.mthigh.org)  
 for updates.