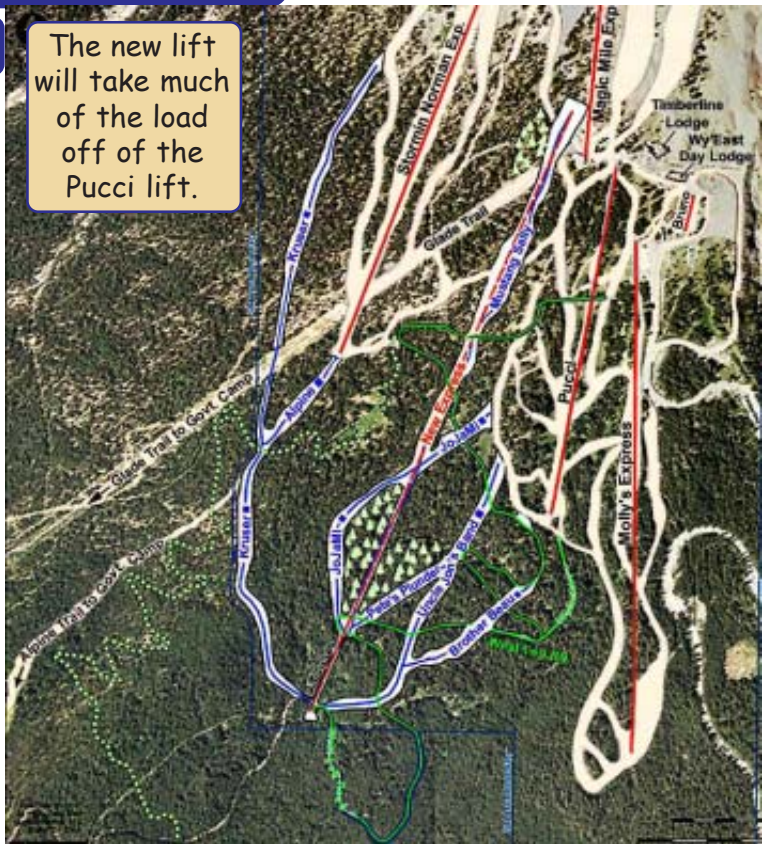


Timberline's New Trails

March 5, 2007. (Monday) Timberline opened it's new terrain for one trial day to anyone with a lift ticket. The new "Jeff Flood Still Creek Basin" lift will be built this Summer, but the new trails were open for a preview. Uphill transportation was provided via snowcats.

The new trails add a lot of varied terrain, very long cruisers, some glades, & some unexpectedly steep runs!

The new lift will take much of the load off of the Pucci lift.



Some of the new slopes are surprisingly steep and long!



Great views of Ski Bowl. Some trees left on the trails. Long cruisers!



Resting about half way down the very long "Kruser" trail

The new lift will be located about half way between the Pucci and the Stormin' Norman's lifts, and descend at least another 1000' feet below West Leg Road. The top station will be near the bottom of the Magic Mile lift.



Jeff Kohnstamm & Kay Kinyon

Jeff Kohnstamm, Timberline's manager, explained how some of the trails got named.

JoJaMi is short for his 3 kids: Joe, Jack, and Mimi.

Uncle Jon's Band is named after **Jon Tullis**, Timberline's Director of Marketing and Public Relations.

Brother Beau is named after a 12 year old kid who died in this part of the forest some 20 years ago, when he got lost trying to ski to Government Camp.

See more photos at www.mthigh.org/PhotosRecent.htm.

New Trails & New Lift at Timberline



The new Jeff Flood express lift was officially christened Saturday, Dec. 8. in a short opening ceremony at 10:00 am. The new lift adds lot of new terrain, much longer runs, a few steeper places, and even quite a bit of tree skiing. But it does require some planning, and carefully reading the map, and some traversing in places, otherwise you might miss some runs. The longest trail, Kruser, is accessed from the top of the Stormin' Norman chair.



Jeff Flood's sister broke the champagne bottle (standing with Jeff Kohnstamm).



Three new trails meet here: **JoJaMi** (out of the photo, left), **Mustang Sally** (the steep one ahead) and **Pete's Plunder** (right).

Canada Ski Safari

Dec. 9 - 16, 2007. We followed the snow farther east, and stayed 3 days in Banff. All 7 nights lodging and gas cost only \$312 per person. It all turned out perfect. We loved Lake Louise, and Kicking Horse, and were very pleasantly surprised at 49 Degrees North (WA) and Silver Mountain (ID). See our photos and video on the [web site](#). Remember, you can still do the basic 5-day trip or the longer 7 or 8 day trip later this year. **Linda & Bruce** are thinking about doing it in early April. Contact them at: Trips@mthigh.org or 503-652-2840.

Panorama - top of the world!



See more photos at www.mthigh.org/PhotosRecent.htm.

See trip planning details and maps in the [Articles](#) section of our web site.



Kicking Horse-- nice powder!