



Lift Lines

== No. 68, August 2006 ==

Mountain High Snowsport Club, PO Box 2182, Portland, OR 97208



Hi folks!

Many dates, times, and prices have changed since the last issue! Please read carefully. Also, see a list of upcoming winter trips on pages 5 - 7. Many deadlines approaching. PACRAT dates have been approved (p. 9). - Emilio



Picnic: August 12 (pp. 1, 3)



Diane, Debbie & Kurt

Seafood Social: Sept. 16 (p. 4)

Mt. High

Mt. High Picnic

Mt. High



Sandi, Gordy, and Gary, last summer.


Aug. 12 (Sat.): Our annual Summer picnic.

Place: Sellwood Park, picnic area A (*same as last year*).

Time: 9:00 am for bike ride, meet at bike trail by the water, near park entrance.

11:00 am for picnic, on the left side of the path (if you enter park from south, heading north).

Details: Lots of fun activities:

- * **Bike ride** at 9:00 am (abt. 1 hour) 
- * **Softball game:** 12(noon) - 1pm;
- * **Potluck** - Bring a favorite dish
- * **BYOB** Club provides only soft drinks.
- * **BBQ** -Mt.High provides hot dogs & frankfurters. Eat abt. 11:30 am.

What to bring: Food & drink, lawn chair, blanket, softball, catcher gloves, badmington game, horseshoes, tennis racket, swim suit, ...

Contact: Gary Stevenson, 503-257-6368.

Directions: Note: there are 2 parks, one on each side of the railroad tracks! For the bike ride, at 9 am, we'll meet at the Sellwood Riverfront park, on the bike path. Ask for Larry Bennett.

For the picnic, at 11 am, enter the Oaks Pioneer park from around SE Grand Ave. To get there, cross the Sellwood bridge and turn left on 6th Ave, then one more left on Spokane, and right on Grande Ave.

See map on page 3. See you all there!

INTHISISSUE

- * Rafting and Summer Skiing, p. 2.
- * Picnic, p. 1 & 3; Seafood Party, p.4
- * Winter trips, pp. 5-7, Steamboat p.10
- * New lifts p.8, Q&A: p.9

Note the color code.
Our club is blue.

2006 CALENDAR

- Blue:** Mountain High events
- Red:** NWSCC / FWSA events
- Black:** Generalevents

Aug. 1 (Tue) Mt. High Board mtg.

Aug. 12 (Sat) Mt. High Picnic !!!

Sept. 5 (Tue) Mt. High Board mtg.

Sept. 10 (Sun) MHSP Golf Tournmnt

Sept. 16 (Sat) Mt.High Seafood Party

Sept. 19 (Tue) Talk Like A Pirate Day,

**Sept. 23 (Sat) Mt.Hood Heritage Day,
Mt.Hood Museum, Govt.Camp**

Oct. 26 (Thur) Warren Miller movie

Oct. 28 (Sat.) Mt. High Halloween Party

Nov. 3-5: Ski Fever Show @ Expo Ctr.

Nov. 6 (Mon) Ski Fair , Monarch Hotel

Nov. 14 (Tue.) Membership Party

Nov. 25 (Sat.) Mt. High Wine Tour

2007

Jan. 5-7: Warner Canyon weekend

**Jan.27 - Feb.3 FWSA Ski Week,
Steamboat, Colorado.**

Jan.30 - Feb.4 Big Mt. (Skiyente)

Feb. 9-16 Utah: Powder Mt/Snowbasin

Mar. 3-4 Cascade Lodge weekend

Mar. 3-11 FWSA trip: Bormio, Italy

**Mar. 16-18: Bus trip: Mission Ridge &
Stevens Pass (Leavenworth, WA)**

**Mar.30-Apr.1 Mt. Bachelor weekend:
Far West Championships + PACRAT**

Mt. High

Deschutes River Raft Weekend - Maupin OR



July 14-16, 2006. (Friday - Sunday) This was our third annual rafting trip on the Deschutes. We camped out for 2 or 3 nights in the Maupin City Park, by the river.

We rafted on Friday and Saturday, using a variety of paddle boats, row boats and inflatable canoes. The weather was perfect. Everybody had buckets of fun!

Thanks to Violet Anderson for these photos.

Elaine, Violet, Haley, Gordy, Sue, and Charlie at Oaks Springs.



Gary Stevenson at Oaks Springs.



Mt. High

Summer Skiing at Timberline



Tom, Kurt, and Salah Mt. Jefferson in the back.

July 23, 2006. (Sunday) How do you get relief from the oppressive heat on one of the hottest days of the year, with temperatures soaring to 106°F? Simple! Go skiing!!! Timberline is open till Labor Day.

This was not an official club trip. Just a few of the "Mt. Hoodlums" PACRAT team racers who decided to cool off on the Palmer snowfield, above Timberline.

We had great snow! It was so warm all night, that the snow never froze, so we did not have to ski on ice early in the morning.

The snow was perfect from the start, and it stayed good all day long, from 7:00 am to 1:30 pm (when the lifts close). As some of the snow has melted away from the slopes west of the lift, it created several islands of rock, with snow meandering between them, providing a playful challenge and a fun place to ski! Of course, the official ski terrain east of the lift was wide and smooth, and you could ski down the canyon almost all the way to the parking lot.

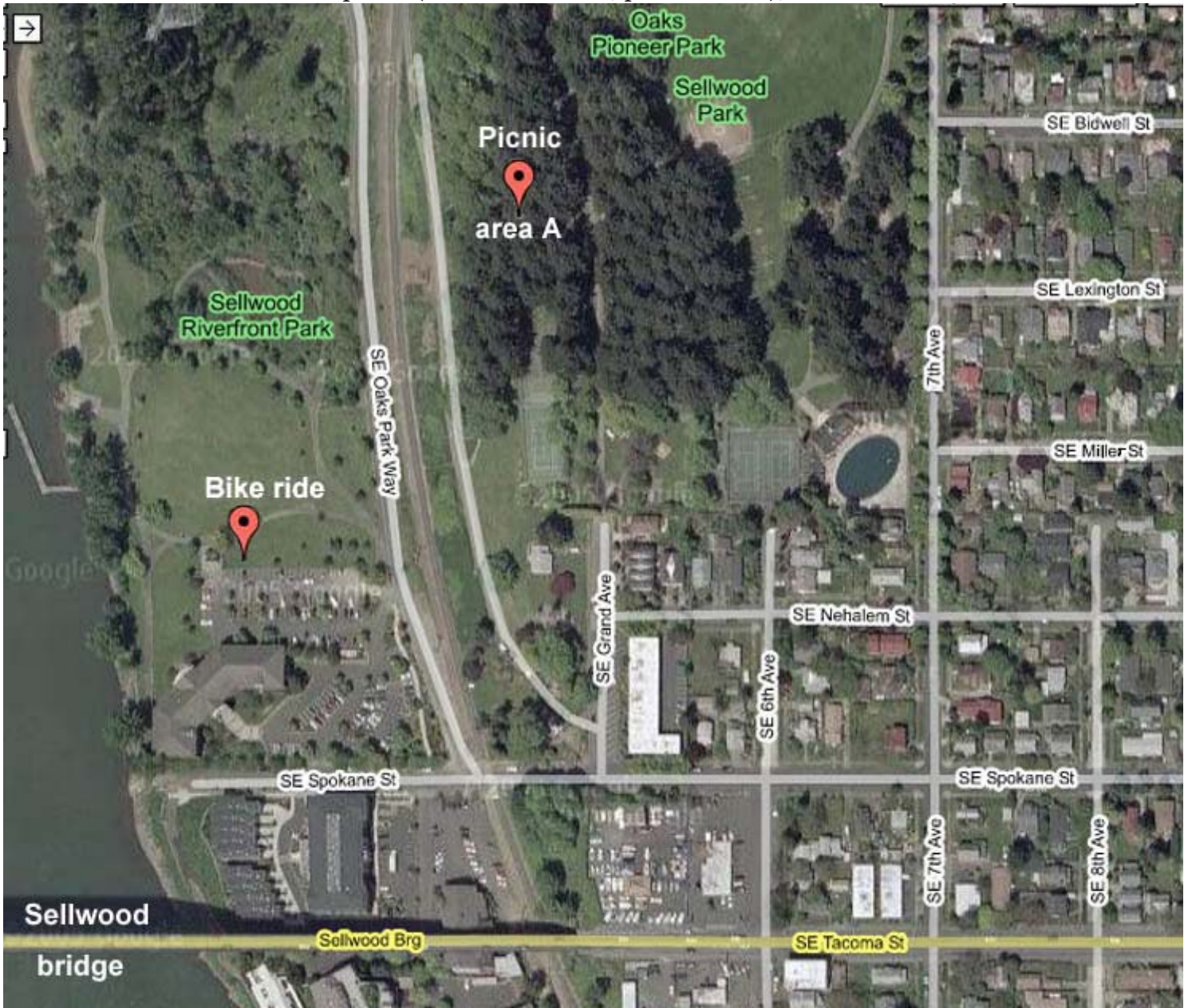
Emilio, Kurt, & Salah



Mt. High Picnic Map

August 12 (Saturday), at Sellwood Park. More info on page 1.

Time: 9:00 am for the bike ride (starting at Sellwood Riverfront Park parking lot, near restroom);
11:00 am for the picnic (in Sellwood Park; picnic area A);



Directions for bike ride: From the Sellwood bridge (or Tacoma St.) turn north onto **6th Avenue**, then left on **SE Spokane St**. Go over the railroad tracks and immediately turn right onto Oaks Park Way. Parking lot will be on your left.

Directions for picnic: Enter the park from SE Grand Ave (which continues as a path into the park; or park in the north-east corner of the park, about a block north of the edge of the map above, off of 7th Avenue; or park on any of the side-streets.

Talk Like A Pirate Day

Sept. 19 (Tuesday) Avast! Me Hearties! Listen up ye buccaneers and saucy wenches! 'Tis time to talk like pirates of old. Why? Just for fun. Another reason: to fight global warming!!! Did ye notice how the number of pirates has decreased lately, as the planet got warmer? Maybe, if we talk like pirates, the planet will cool down!

Mt. High Halloween Party

Oct. 28 (Saturday) Meg Gadler has graciously offered to host this party. If you wish, you can come dressed as a pirate, and practice some of your pirate talk. Otherwise, just come and have some fun, and meet other club members. It's basically a potluck. Details in the next issue of your favorite newsletter.

Golf for the Mt. Hood Ski Patrol - article by Meg Gadler, Ski Patroller & Mt. High member



Sept. 10 (Sunday)
Every year at each ski location, hundreds to thousands of people need assistance from the **Mt. Hood Ski Patrol**. These people

needing MHSP help are your sons, daughters, husbands and wives and friends. Hey, it could be you too!

The **fully volunteered** MHSP depends on YOU, the skiers and boarders, to meet the operating expenses. Funds raised allow the MHSP to purchase medical supplies, defibrillators, back boards, access to life flight, radios, sleds and other **life saving** tools.



Please help us reach our fundraising goal this year by participating in our annual golf tournament **September 10**, at the Reserve Vinyards in Aloha.

The **Mt. Hood Ski Patrol** is the beneficiary of this charity Golf Tournament, sponsored by **Jelly Belly**.

Location: The Reserve Vineyards & Golf Club, 4747 S.W. 229th, Aloha, Oregon 97007.

Check in at 6:45 am. Shot-gun start at 7:30 am. Prizes, hosted lunch, raffle, and silent auction.

More info at: www.mthoodskipatrol.org/golf/2006/

Contact: Pat Stevens, Golf Benefit Committee, (503) 293-6896 or pat@sdeltd.com.

Visit us at: www.mthoodskipatrol.org



Meg (on the left) during a practice session.

Mt. High Seafood Social

Sept. 16 (Sat.): Annual End-of-Summer Party.

WHAT: Time for our traditional end-of-summer Seafood Social party. This time, for a change, we'll have it across the river, in Washington, and you'd be surprised how close it is to downtown Portland. Our host will be **Diane** and **Bob**. Did you know that Diane is Linda McGavin's sister?

HOSTED BY: Diane Adkin & Bob Raemer

DATE: SATURDAY SEPT 16

TIME: 6:30 pm

LOCATION: 2620 NW Cascade Street
Camas, WA 98607

CLUB PROVIDES: the main course: seafood / fish and soft drinks



Diane, Debbie & Kurt

YOU BRING: a side dish, appetizer, or dessert, & libations of choice.

Please RSVP to:
Diane Adkin:

dadkin@attglobal.net

Warren Miller movie & Ski safari



Oct. 26 (Thur.)- Movie night!

Warren Miller's latest movie, "Off the Grid" comes to town. Let's do dinner, as usual, at "Madison on 5th" and then go see the movie. For now, just put it on the calendar,

since we still don't know the price. But, eventually, we'll buy group discounted tickets for all who want to join us.

Nov. 24-27, 2005. - Canadian Ski Safari (Or, it could be done later, in April 2007)



All those who go see the new **Warren Miller** movie usually get some free lift tickets. Maybe even 7 tickets!

Last year, 4 of the tickets were to Canadian ski areas. We carpooled there in early December, but Thanksgiving may be a good time too. Destination? Wherever Warren Miller takes us this year! Probably Canada.

This is one of our least expensive trips! 4 days for about **\$200 - \$275** (for lodging and gas). The skiing is free. This year, we might stay in one place for more than one day.



2006/2007

Winter Trips

NOTE: Some of the most interesting trips have tight >. Please sign up early.

1. **Steamboat Ski Week.** The deadline for full payment is November 1, 2006..

2. **Utah trip.** The deadline for signups is October 31 (because after that we'll need to release rooms and airline seats).

3. **Washington bus trip.** The bus can carry 50 people, but only 44 spots are available at the standard room rate. So, only 44 people can go on this trip for the basic price. After those 44 spots get filled, you can only join the trip if you pay extra for one of the special rooms (double occupancy only).

NWSCC

Ski Washington Challenge



Winter 2006/2007.

The Northwest Ski Club Council, in cooperation with the local ski industry is expanding its ski challenge to the State of Washington.

Washington has 14 ski areas. To meet the Challenge, you will need to ski/ride at least 10 of these in a single winter season.

Extra credit will be given for the 4 optional ski areas: Hurricane Ridge, Leavenworth, North Cascade Heli-Skiing and Cascade Powder Cats.

It helps that the Mountain High club is organizing a trip to 2 of these ski areas: Mission Ridge and Stevens Pass.

More info will be posted on our web site, and the NWskiers.com web site. Contact **Steve Coxen**, 503-679-9022, email: sacoxen@aol.com.



Mt.High

Warner Canyon Weekend



Jan. 5 - 7, 2007.

We discovered Warner Canyon as an excellent place for powder skiing, mainly as a result of the Ski Oregon Challenge last season. Let's visit again this winter.



This will be totally informal. It's not an official "trip", but a simple road trip, either carpooling or caravanning down there. If there is enough interest, we might consider hiring a bus. Otherwise, we'll just drive.

Since Warner Canyon is closed Monday - Thursday, the best time to visit (for fresh tracks) would be on a **Friday**, if you can take the day off. We could drive there on Thursday evening, after work. If not, we could leave Friday evening.

Take Hwy 97 past Bend. At La Pine, take Hwy 31 to Lakeview. After skiing at **Warner Canyon** on Friday/Saturday, we could drive only half-way home, and ski at **Hoodoo** on Sunday. We'll be home Sunday evening.

If you are interested, please contact **Emilio**, 503-378-0171.

FWSA FWSA 2007 Ski Week



Steamboat Colorado

Jan. 27-Feb. 3

The biggest trip of the year, with clubs from all far West-



ern States participating. The Northwest now has only 36 spots allocated. About 20 are already taken. Son only about 16 remain!!! Steamboat is home to former Olympian - Billy Kidd, and home to champagne powder.

Price: \$850 without air.

Price includes 7 nights lodging (dbl occ.), 5 days' lift tickets, Welcome party, Mountain Picnic, 3 races, Farewell Party, and much, much more. Initial deposit of \$250 being accepted now.

See details on page 10.

Contact: Rod Robinson, 1- 541-344-7170, rdrobinson@aol.com

Mt. High

Utah: Powder Mt. & Snowbasin



Powder Mt.

4-DAY TRIP: Feb. 9-13 (Fri. - Tue.)**7-DAY TRIP: Feb. 9-16** (Fri. - Fri.)

Here's something totally new! To satisfy all tastes, we'll have two simultaneous trips, for 4 or 7 days. Both groups will ski together the first 4 days. We'll all leave Portland together, on a Southwest flight at 6:40 pm, Friday.

We'll ski for a full 4 days (or all 7 days) and return home on Tuesday night (after skiing), or Friday night, 6:20 pm.

We'll stay in Eden, less than 15 mins. from **Powder Mt.**, and abt. 20 mins. from **Snowbasin**. Also, within 1 hour driving are Park City, Deer Valley and the Canyons. Only 10 mins from Eden is **Wolf Mountain** with night skiing!

The **4-day trip costs \$800, and includes:**

- * 4 nights in Red Moose Lodge (hotel rooms);
- * Continental breakfast buffet
- * 1 lift ticket to Powder Mt. + 1 to Snowbasin
- * Airfare + Renting an SUV for each 4 people.

The **7-day trip costs: \$1030, and includes:**

- * 7 nights in Moose Hollow Condos (2 bd/2ba; 4 people per condo);
- * No breakfast, but there is a breakfast restaurant + a supermarket.
- * 2 lift tickets to Powder Mt. + 2 to Snowbasin
- * Airfare + Renting an SUV for each 4 people (for the whole week).

Only 2 (or only 4) lift tickets are included in the price of the trip, to give everyone more flexibility in deciding where to ski the remaining days. Additional lift tickets for Powder Mt. or Snowbasin can be purchased for \$48.

Depending on snow and weather conditions, we can decide to either continue skiing at Snowbasin and Powder Mountain, or drive to any of the other ski areas. With several SUVs at our disposal, we can even separate into smaller groups going to different places. Park City might be an excellent option for the last day of the trip.

For a **land-only option** (without airfare) please subtract **\$250**. If you don't need to join in the car rental, subtract **\$130**.

Emilio & Linda are working on this together. Emilio for the shorter trip, Linda for the longer one. Linda is the overall trip leader. Contacts:

Emilio: 1-503-378-0171 or email: info@mthigh.org.

Linda: 503-412-3531, or email: Trips@mthigh.org.


To reserve your spot, send a **\$500** deposit, made out to **Mountain High Snowsport Club**, and mail it to Mountain High Snowsport Club, PO Box 2182, Portland, OR 97208.

Remember to indicate which trip you are signing up for: 4 days or 7 days, and whether you are flying with us.


NOTE: It is important to sign up early. There's a lot of interest in this trip. First come, first served. All deposits must be in by **Oct. 31**, or air and lodging spots may need to be released. Final payments by **Dec. 10, 2006**.

Skiyente Big Mt. (MT)



Jan. 30 - Feb. 4. A train trip. We've been to Big Mountain two seasons ago, but some of you missed that trip. So, here's your chance to see Big Mt. 

The **Skiyente** (all female) ski club is organizing a trip to **Big Mountain**, Jan 30 - Feb. 4, 2007, and we are all invited to join in. Details are yet to be announced. For more info, contact: Colleen Walter, at colleenski2002@yahoo.com.

FWSA Bormio, Italy, 2007 **March 3-11**

7 nights/7 days with breakfast and dinner! Round trip air-fare on



Delta airlines. Join a group of skiers from a variety of Far West ski clubs.

Price: \$1,335 - \$1,440 for food, lodging and transportation. It doesn't include lift tickets. Also, add approx. \$80 pp in taxes, plus a \$150 fuel surcharge.

Optional pre-trip to Switzerland & post trip to Rome & Florence.

Details in [flyers](#) on our web site.

Deposit: \$200 to Far West Ski Association, c/o Norm Azevedo, 901 Sousa Dr., Walnut Creek, CA 94597-2922.

Contact Norm at 1-925-944-9816 or fwsatravel@sbcglobal.net.

Powder Mt.: 2,000' vertical, and 5,500 acres (the largest in the U.S.)
1 Express Quad, 1 Fixed Quad, 1 Triple, 1 Double. Snowcat ride: \$8.

Snowbasin: 2,950' vertical, and 2,800 acres. 1 Tram, 2 Gondolas, 1 Quad, 4 Triples, 1 Double.

Mt. High Cascade Lodge 

March 3-4
2007.



2days/ 1night
at the friendly
Cascade Lodge in Government
Camp.

We'll ski both days, Saturday and
Sunday, most likely at Ski Bowl,
just across the street!

In the evening, we can party at
Charlie's (also just across the
street)!

Price: Only \$17 for lodging per
night (in bunk beds). This is a
special introductory guest rate for
local ski club members.


Contact Rich Rizk, 503-641-6048,
Rich@RizkLaw.com, or Emilio
Trampuz, 1-503-378-0171 or
info@mthigh.org.

See the Wabbit?

Can you spot the rabbit in this
photo? It was taken by Julie
Blenn during our **Canadian ski
safari**, in December 2005.

*Check our web site
for trip updates*

www.mthigh.org/Trips.htm.

Mt. High**"Say WA" bus trip** **Mission Ridge & Stevens Pass**

March 16-18. 2 days/ 2 nights. The bus
trips are usually our club's best and most
fun events. You don't have to miss any
work days, as this is just a weekend.

We will leave Friday around 5 pm, and
return Sunday night. We'll visit:

1. **Mission Ridge**, with a new express lift
installed last season. You can ski by a
World War II bomber that crashed on
the mountain! 2,200' vertical. 1 Express Quad, 3 Doubles.
2. **Stevens Pass**, lots of tree skiing, front and back + lots of cruisers!
1,800' vertical, served by 3 Quads, 4 Triples, 3 Doubles.

Lodging: Both nights, we'll stay in the charming town of Leavenworth.
We have booked almost the entire Obertal Inn, just for us! Most rooms
have 2 queen beds, some have 1 king bed. There are also 2 Fireplace
Suites and 2 Jacuzzi Suites. If a couple wants to book one of those
suites, each **person** would pay an extra \$42 for a Fireplace Suite or \$64
each for a Jacuzzi Suite. First come, first served. Reserve your's soon!

An "expanded continental breakfast" is included.

Price: Only \$200 for lodging and transportation, plus approx. \$38 per
lift ticket (exact price tba later). We will be getting deeply discounted lift
tickets at the hotel.

The trip price is based on 26 people. For each 2 people that sign up over
that number, the price for everyone will go down by \$4 . (For example,
at 32 people it would cost \$188 each, and at 42 people it would cost only
\$168 each!) So, let's make sure everyone goes on this trip!

Contact: [Linda McGavin](#) (trip leader) or [Emilio Trampuz](#) (co-captain).

Reservations: Send a \$100 deposit made out to **Mountain High
Snowsport Club**, and mail it to Mountain High Snowsport Club, PO
Box 2182, Portland, OR 97208.


Remember to specify if you want one of the special rooms.

**NOTE: Only 44 spots available at the standard rate. After those 44 spots get filled,
you'll only be able to sign up for the more expensive rooms (double occupancy only).**

P.S. In case you didn't know, "Say WA" is Washington's new slogan.



Harry & Emilio @ Mission Ridge

Mt. Bachelor Weekend / FWSA Championships 

Many will come to
Bend just for fun!

Mar. 30 - Apr. 1. Multiple events. Our last
PACRAT race of the season on Sunday. The
Far West Championships will have a Slalom
on Saturday and a GS on Sunday. All
PACRAT racers can enter both races. We'll
all drive to Bend. Activities at the Riverhouse.
Emilio, 1-503-378-0171, info@mthigh.org

What's New at Ski Areas!

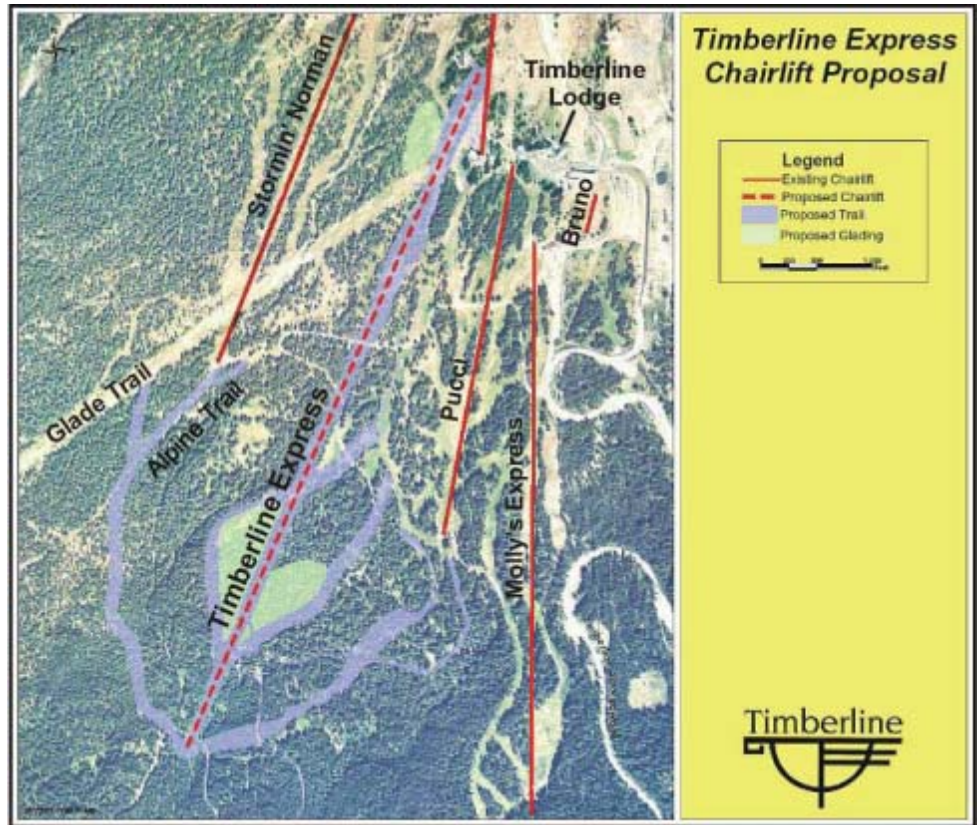
Several ski resorts are building new express lifts!

Timberline has begun cutting trees for the new trails as of July 2006. The new lift will not be ready for this upcoming season, but should be in service for the 2007/08 season.

The new lift's top station will be right next to the bottom of the Magic Mile, and the trails will go lower than the lowest point of Pucci, opening new trails between Stormin' Norman and Pucci.

The upper parts of the existing Glade and Alpine trails (which both descend to Government Camp, but are currently not patrolled) will be used.

Note: This is **not** the new gondola that had been rumoured earlier, which might some day follow the Glade Trail all the way down to Government Camp, to provide extra parking space at Government Camp, so people would not need to drive all the way up to Timberline.



Silver Star (British Columbia) has added a new lift last season - in the Silver Woods area. For this season, it is adding yet another lift, in the Attridge area - which used to be a hidden powder stash for the locals on the far left of the front side of the mountain.

Big White (Silver Star's big brother area) is also adding a new express lift for this season. It will parallel the Ridge Rocket Express, but slightly more to the left. Big White has also added the Cliff Chair 2 seasons ago, to serve a steep back bowl (see photo). Due to lack of early snow, we have not skied that bowl yet, on our ski safaris. Maybe it's time for another mid-winter trip to Big White!

Whistler (B.C.), as of May 2006, is building "Piccolo", a high speed quad to serve a bowl left of the Harmony bowl. It's a little travelled area, because it's hard to find the Burnt Stew access, where Emilio found untouched powder on the last day of our trip to Whistler in April 2004. This lift opens up 1,000 new acres.



Powder Mountain (Utah), famous for its powder and slow lifts, is adding its first Express quad, the Hidden Lake Express, for this season - 06/07.

Mission Ridge (Washington) has replaced its main lift with an express last season, but none of us (except Linda and Bruce) have had a chance to ride it yet. So, this will be a new experience for most of us on this year's bus trip to Washington (in March 2007).

PACRAT Racing Dates



Alan, Phil and Doug at Ski Bowl

The PACRAT race dates for next season have been confirmed. Also, for all future years, we'll try to keep the exact same weekends, so we will always know in advance when the races will be held, and thus plan our ski trips around it.

Note that these are all standard dates. Only the 5th race at Mt. Bachelor is an exception this year.

Race	Weekend	Date	Place
1.	2nd Sunday in January	1-14-07	Timberline
2.	4th Sunday in January	1-28-07	Meadows
3.	3rd Sunday in February	2'18'07	Ski Bowl
4.	2nd Sunday in March	3-11-07	Meadows
M.	4th Sunday in March	2-25-07	Meadows
5.	1st Sunday in April	3-31-07*	Bachelor*
R.	2nd Friday in April	4-13-07	

M = Makeup race (only if another one is cancelled).

R = Rat Attack (the Awards party)

* **Exception:** This year, the 5th race will exceptionally be held on **Saturday, March 31, 2007**, at Mt. Bachelor, because it will be combined with the Far West Championships. Most other years, the 5th race will be held on the 1st Sunday in April, at **Mt. Hood Meadows**.

The final and most accurate dates will always be posted on the PACRAT web site at:

www.pacrats.org.



NW Ski Club Council

Our club is affiliated with the NWSCC, so we are all members. Go to the **NW Ski Club Council** web site:



www.nwskiers.org to check out member benefits, trips info, and more. You can also sign up for an **email group** for regular updates.

[Join NWskiers](#)
[Email Newsletter](#)

The NWSCC meets every 3rd Wednesday of the month at 7 pm, at the **Round Table Pizza**, 10070 SW Barbur Blvd., Portland. 503-245-2211.

These meetings are open to everyone. There is often a guest speaker, and you get to hear what's happening in other local ski clubs. The next meeting is **August 16**.



Mt. High Letters

Q The flight to Utah was supposed to be on Delta. Now it says Southwest. Why?

A Unfortunately, Delta has decided to black out the whole weekend around President's Day, meaning that the tour operators cannot sell group tickets for that period. This means we would either have to shorten the trip to only 6 days and go home on Thursday, or we need to switch airlines and keep the trip at 7 days. We decided to go with Southwest Airlines for a full 7 days.

Q I hear they started clearing some trees for the new lift at Timberline. If all they needed was a few trees out of the way you should have said something, I would have been glad to make a few runs "in the trees" where they wanted runs! I knock over a bunch of those dang things every year! I'm the only skier I know that has to file an EIS (Environmental Impact Statement) before I go skiing! - Bruce

A Yes, Bruce, we remember your close encounter with the trees on Brundage Mountain last year. We'll recommend your services to Timberline. But, if you pull this stunt on a trip agin, we'll wring your neck!!!



Gareth, Sheridan and Bruce (in neck-brace)

FWSA Far West Ski Association FWSA

The Far West Ski Association (to which we all belong) organizes at least 2 big trips each winter:

- A **National Ski Week** - this year to **Steamboat, Colorado**, January 27 - February 3, 2007. See more info in the next column on this page.
- A **European trip** - this year to **Bormio, Italy**, March 3 - 11, 2007. See page 6.

NEXT SKI WEEK AT WHISTLER

The next Far West Ski Week, **January 19-26, 2008**, will be at **Whistler/Blackcomb**. Jot that down. We'll have the opportunity to try the new Piccolo express lift (see page 8), and to preview the slopes of Whistler and Blackcomb mountains before the Winter Olympics, to be held in 2010.

FAR WEST RACING ASSOCIATION

FWRA is the racing arm of FWSA. Every winter, it organizes at least 2 major racing events:

- Three races** (a qualifier, a slalom, & a GS) during the Far West **Ski Week** (this year in Steamboat).
- The Far West Championships**, usually in April, and most often held at Lake Tahoe ski areas, but this coming season, the Championships will be held at Mt. Bachelor, March 30 - April 1, 2007. All our PACRAT racers automatically qualify for the Far West races, if they wish to participate.

FWSA Leadership

Considering that **Mountain High** is only one of over a hundred clubs represented by the Far West Ski Association, it is pretty impressive that 3 of the top FWSA officials are members of our club.

Randy Lew is the FWSA President.

Debbi Kor-Lew is VP of Marketing

Steve Coxen is chairman of the Board of Trustees..

More info on the FWSA web site: www.fwsa.org.



Randy Lew



Debbi Kor-Lew



Steve Coxen

FWSA FWSA Ski Week FWSA**Steamboat, CO**

Jan 27 - Feb 3, 2007.

The biggest ski party in the West is the annual Far West trip, involving dozens (if not

hundreds) of ski clubs throughout the Western States (OR, WA, ID, NV, CA, AZ, NM). See the FWSA web site: www.fwsa.org.

36 spots are reserved for Northwest skiers. 26 are already taken. Only 10 spots left! So, hurry up and sign up!

The phrase "champagne powder snow" was coined at Steamboat. With 20 lifts serving 143 trails, 3,600 vertical feet, and nearly 3,000 skiable acres, Steamboat provides a variety of terrain for every level of skier. Steamboat's six peaks are filled with groomed cruisers, bumps, steep, open meadows and legendary tree skiing.

The price (yet to be finalized) of abt. **\$850** includes:

- * FWSA lodging (double occupancy);
- * FWSA amenity package (all kinds of goodies);
- * Lodging at The Lodge at Steamboat, located just 200 yards from the gondola;
- * Welcome Party, Après Ski Party, Mountain Picnic, Farewell Awards Party;
- * 3 Races; and
- * 5 of 7 day Lift Tickets.

NOTE: Air & ground transportation is not included.

Plan now and reserve your spot by making a \$100 deposit! Deposits are fully refundable till June 30th.

Payment Schedule:

July 1st - \$250 due,

September 1st - \$350 due and

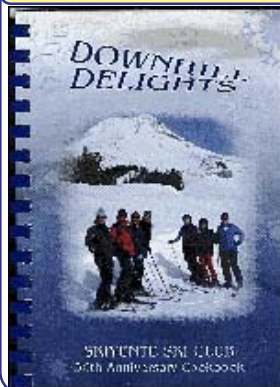
November 1st - remaining balance due.

Trip cancellation policy: Cancellation from July 1st until September 1st will result in a \$25 cancellation fee, cancellation between September 2nd and November 15th will result in a \$100 cancellation fee. NO REFUNDS after November 15th.

Please make your checks payable to: **Northwest Ski Club Council**, P.O. Box 1915, Portland OR 97207.

Contact **Rod Robinson** 541-344-7170, rdrobinson@aol.com

Cookbook for Skiers!



The Skiyente Ski Club has prepared a wonderful cookbook, based on their experiences in the kitchen and on the slopes. When you are skiing you need to eat properly!

The book is called Downhill Delights. It costs \$10, plus \$2 for shipping. Send your name, address, phone number and a check for \$12 payable to **Skiyente Ski Club**. Mail it to: Skiyente Ski Club, PO Box 56342, Portland, OR 97238. Contact **Louise DuFresne**, skiarad@aol.com.

You can also find the book at **Valian's ski shop** in Govy.

Mountain High Meeting

First Tuesday of the month.

Sept 5 (Tues.): Open to all who want to get more involved with the club. An organizational meeting to plan future events.

Gather at 6:30 pm. Start at 7 pm.

Location: **Round Table Pizza**, 10070 SW Barbur Blvd., Portland, near Capitol Hwy.

Mountain High snowsport club contacts:

General information: info@Mthigh.org

- President:** Gary Stevenson, H: 503-257-6368,
- Vice-President:** Terry White, H: 503-297-1427, W: 503-296-6075, TWhite223@msn.com
- Secretary:** Sue Bennett, H: 503-774-8747, OptomistSue@comcast.net
- Treasurer:** Kurt Krueger, H: 503-625-1492, telek2@att.net
- Race Director:** Gordy Lusk, H: 503-804-8363, GordyLusk@hotmail.com
- Newsletter Editor:** Emilio Trampuz, H/W: 1-503-378-0171, info@mthigh.org
- Activities Director:** Jaxine Harris, H: 503-692-9719, JaxineAH@msn.com
- NWSCC Rep:** Debbi Kor-Lew, H: 503-682-1563, W: 988-5138, ijustwannarun@aol.com
- Trip Directors:** Marsha Cosgrove, H: 503-646-5292, W: 503-799-2833, HappyHairdresser@msn.com
- Linda McGavin, H: 503-652-2840, W: 503-412-3531, Trips@mthigh.org
- Larry Bennett, H: 503-760-2360, BENNETT896@aol.com

DOUGH TRANSMITTAL FORM

For all Mt. High trips, make check payable to: **"Mountain High Snowsport Club"**
 Mail to: Mountain High Snowsport Club, PO Box 2182, Portland, OR 97208.

PLEASE PRINT CLEARLY: New membership Renewal

Name(s): _____

Address: _____

Phone (Hm): _____ Phone (Wk): _____

Email (Hm): _____ Email (Wk): _____

Whereas the Mountain High Snowsport Club ("Club") is an organization of fun loving ADULTS whose events are organized by members who volunteer their efforts for the enjoyment of their fellow members and friends, please remember when I participate in Club events I do so at my own risk. Sporting activities, indeed, any activity, includes inherent risks. I will evaluate my own abilities and responsibilities and join in the Club fun as a responsible and considerate adult. I will not hold the Club or any Club officer liable for the consequences of my decisions and my behavior. The bottom line is, stuff just happens sometimes and the club volunteers are not to be blamed for helping us have fun. Besides, the Club has no assets, except for a leftover banner, some balloons, or a couple of empty beer bottles with the Club's name on them.

- Email Preferences:**
- Newsletter (once a month): yes, link only yes, complete file no
 - No changes - Club news & events (between newsletters): yes no
 - (same as last year) - Other ski news (NWSCC, FWSA, ski areas, trips...): yes no

Please take my money, and apply it toward the following Ski Club fun stuff: Deposit? Paid in full?

- Membership Dues (for 2006/2007):** Single (\$25) couple (\$40) \$ _____
- PACRAT Racing** Total: \$85 Team name: _____ \$ _____
- Utah 4-day** (Feb. 9 - 13, 2007) Total \$800 Deposit: \$500 \$ _____
- Utah 7-day** (Feb. 9 - 16, 2007) Total \$1030 Deposit: \$500 \$ _____
- Washington bus trip** (Mar. 16 - 18, 2007) Total \$200 Deposit: \$100 \$ _____
- Other:** _____ \$ _____

Comments (For whom you are paying. Roommate requests,...): _____

Signature(s): _____ Date: _____

Club membership = 198 Newsletter Distribution

The August issue is posted on our web site, and also:
240 copies via email
32 paper printed copies sent via US Mail.
Copies are sent to potential members, other clubs, etc..
Please help us minimize the cost of mailing paper copies.
Send your email address to: info@mthigh.org.

Steamboat

Ed Palmer visited Steamboat last season and sent us a few photos. This is just one of them. See the gondola? Something about this photo is reminiscent of Val d'Isère.



Steamboat

Emilio Trampuz
Mountain High Newsletter editor
4742 Liberty Rd. S., #296
Salem, OR 97302

NOTE: Check the club's web site for updates. See www.mthigh.org.

Bike Rides



- by *Janet Siverts-Smith* -



Come join me. Here are some organized rides that I have done in the past and I'm considering doing a few this year:

August 13 (Sun.) - Providence Bridge Pedal
www.providence.org/oregon/events/bridge_pedal

September 9-17 (Sat/Sun.) - CYOR the Week Ride
http://www.cycleoregon.com/default_week.htm

September 24 (Sun.) - Peach of a Century
www.salembicycleclub.org/majrides/majrides.html

Contact me at: jsivertssmith@fs.fed.us

Snowbasin (UT) and Steamboat (CO)

To prepare for next season's trips, check out these articles. Our member **Les Furnanz** wrote one of them.

Article on Snowbasin, UT:
<http://highonadventure.com/Hoa06feb/Lee/lee06.htm>

Article on Steamboat, CO:
<http://www.highonadventure.com/Hoa06feb/Les2/steamboat.htm>

