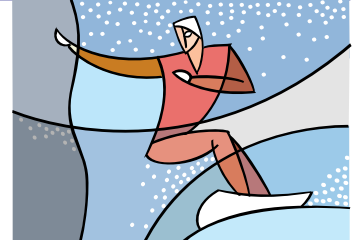




Lift Lines

== No. 48, December 2004 ==

Plaza/Edgeset Ski Club, PO Box 2182, Portland, OR 97208



Christmas Ship Parade

(happy hour on the willamette)

DATE: Dec. 9, 2004

WHAT: WOW! It's the Holiday season again, and that means another tradition to celebrate. Gather with friends to watch the annual Christmas Ship Parade.

TIME: 5:00 pm - after work - as early as possible to get a seat.

WHERE: Who-Song and Larry's
7850 SW Macadam
Portland

DID YOU KNOW? 2004 marks the 50th anniversary for the Christmas Ship Parade. The first year was 1954 with one lone sailboat representing the Portland Yacht Club. The decorations were boughs of green and ribbon tied along the rails.

Enthusiasm grew and the next year brought more participants. today, the flotilla averages 55-60 boats between the Columbia and Willamette River fleets.

Boat owners design and build their lighted displays. They also pay their operating costs, which include fuel. As skippers retire, their well known displays are handed down so that the traditional favorites continue.

The Ship parade is so popular that many restaurant reservations are made a year in advance and hotel rooms are booked in mid-summer.



Both fleets are out every night of the thirteen days scheduled for the parade. The only thing that cancels an evening is the weather, and the decision is determined one half hour before start time.

Sooo, put on your "jingle bells, an elf hat, a song in your heart", and meet fellow Mt. High folks to toast the 50th annual Christmas Ship Parade.

CONTACT: Jaxine Harris
503-699-3341

IN THIS ISSUE

- * Buying a Subaru (p. 2)
- * NW Snowsports Advocates
- * Mt. Ashland needs your help
- * Skiing Heritage (p. 10)

Note the color code.
Our club is blue.

2004 CALENDAR

Blue: Plaza/Edgeset events
Red: NWSCC/FWSA events
Black: General events

Dec. 9 Thur. Christmas Ship Parade

Dec. 9-14. Canadian ski safari. (p.2)

Dec. 9-14. Beaver Creek & Vail trip

Dec.19. Sun. Ski day at Meadows,

**Jan. 1. New Year's Day Potluck
Brunch & Games! (p. 3)**

Jan. 4. (Tue.) Board meeting (see p.7)

Jan. 9. PACRAT race 1 at Meadows.

Jan.14-16. Crystal Mtn. (WA) bus trip.

Jan.23. PACRAT race 2 at Timberline

**Jan.29 - Feb. 5. Aspen/Snowmass Far
West Ski Week**

Feb.2-6. Idaho (Schweitzer) Ski Safari

Feb. 6. Superbowl Party at Fred's

Feb. 13. PACRAT race 3 at Meadows.

Feb. 16-20. Big Mtn. (MT) train trip

Mar.6-7. Oregon Cancer Ski Out

Mar.12-19. USRSASkiWeek Bormio

Mar. 13. PACRAT race 4 at Ski Bowl.

**Mar. 18-20. Far West Championships
Heavenly Valley, CA.**

Apr. 3. PACRAT race 5 at Meadows.

Mt. High New Year's Day Potluck Brunch and Games



When: January 1, 2005, (Saturday) 12:00 pm (noon) - 4 pm

Where: Gary and Suzanne Stevenson's, 2536 NE 146th Dr., Portland, OR, 503-257-6368.

Scoop: Bring your favorite New Year's potluck dish and beverage. The club will provide coffee and sodas. There will be Gary's famous animal ball golf. Not a golfer? Not to worry; we use the term "golf" very loosely. All equipment will be provided.

Directions: I-84 east to Halsey exit; follow Halsey East to 148th; turn North; drive to 146th Dr, turn left.
I-205 North or South to Glisan exit; follow Glisan East to 148th; turn North; drive to 146th Dr., turn left.

MOUNTAIN HIGH SNOWSPORT CLUB

Special Deal on a Special Car

- by Emilio Trampuz -

Let me tell you how you can get a good deal on an excellent car built for the snow. For me, that's a Subaru, but you can also get a Chevy or a Suzuki. For my brand new 2005 Subaru Outback, I paid about \$1000 less than the sticker price, and probably at least \$500 better than I could find anywhere else.

Thanks to a deal arranged by the NWSCC, all our club members have access to SPECIAL FLEET PRICING on **Subaru, Chevrolet, or Suzuki** vehicles at **Carr Auto Group!** Prices will range from a few hundred dollars over factory invoice for next year's models to possibly thousands UNDER factory invoice for this year's or prior year's models. Fleet pricing will also be available on used cars.

Not only will your NWSCC membership card get you these special prices, but you can also skip all the **hassles** of buying a car! Click on the link on the NWSCC website, www.nwskiers.org, and go to the Carr fleet website www.carrautofleet.com, where you will access a drop-down menu to select "NorthWest Ski Club Council" pricing.

The login is "skiclub" and the password is "downhill." Select the car you want, and you'll get a price quote, with no obligations. You will deal directly with Nanda Kishore, a very nice gentleman, who has been to our Council meetings and knows some of us in person.

You are purchasing over the internet! For any of our members living outside of Portland, your desired vehicle can be delivered to a dealer near your home! In such case you won't be able to utilize a trade in, because Carr will not be able to evaluate your car. You may be asked to show your NWSCC card as proof of membership.

In my case, I had done a lot of research, so I knew the features I wanted and the price I could expect. The price Kishore quoted me was excellent. I emailed him back that I accept, and we then met for a quick signing of all the needed documents, and I drove out of there an hour later in my new Outback! No pressure, easy, painless, and a good price to boot! I would recommend it to everyone,



Kishore in front of the dealership



Emilio and his new Subaru

Subaru Outback

Q. So, what makes the Outback a good winter car?

A. Lots of standard features, made for snow & ice, such as:

- All-wheel drive
- Anti-lock (ABS) brakes
- Heated outside mirrors
- Windshield wiper de-froster
- High ground clearance, 8.7", higher than Land Rover Discovery II, Nissan Pathfinder, or Ford Explorer XLS.

Q. Those are the basics, but what else is special?

A. After owning 3 earlier Subarus, I am delighted by the many new features on the 2005 model. Someone had devoted a lot of attention to detail. For example:

- Standard side-air bags AND curtain air-bags (from ceiling);
 - Heated front seats;
 - Outside temperature display
 - Trip computer and intermittent wiper blades. Simple little things, but these are often options available only on the more expensive versions of other cars, while they are standard on all Subarus.
 - Improved insulation; the car is quiet! No need to raise your voice at highway speeds.
 - Better gas mileage 22-28 mpg.
 - Roomy cargo area, hidden storage, shopping bag hooks.
 - Brighter headlights
 - Automatic/manual transmission in one! Switch on the fly!
 - Improved cup holders, improved driver seat adjustment.
- For days, I kept discovering new improvements! Great car!

Mt. Ashland needs you help

Mt. Ashland has been working for years on getting approval for a modest expansion, involving one new chairlift, improved base services (including a new restaurant, improved parking, new restroom, lockers, a tubing hill, etc. The whole process started in the mid 1980s. The first approval was granted in 1991, but required more documentation.

After years of scientific analysis, public collaboration and input, let's hope the final hurdle can be overcome, so we can enjoy an improved and somewhat expanded ski area in our lifetime!

Although Mt. Ashland has received U.S. Forest Service approval, it is important that we write letters of support for that decision to local newspaper editors, Forest Service officials, and our political representatives. Please see copy of letter inside this newsletter written by Steve Coxen for ideas about what you could say and who to send your letter to. The deadline is mid December.

For more information on how you can help go to the NWSCC web site (see side-bar) or contact **Steve Coxen** at 503 679 9022 or email at sacoxen@aol.com.

Why don't you plan to visit **Mt. Ashland** this winter and see it for yourself? Mt. Ashland offers "See and Ski" Packages in March 2005 with special lodging, lift, and theatre ticket pricing, as well as discounts on rentals and lessons. Ski Mt. Ashland and see a play at Oregon Shakespeare Festival with group pricing for 15 or more participants. For a brochure, contact **Steve Coxen** at sacoxen@aol.com.



Our club's Mystery trip to Mt. Ashland, Feb. 2003.

NW Snowsport Advocates

Skiers and snowboarders are often silent when a resort tries to expand, while facing fierce opposition from organized environmentalist groups. It doesn't have to be that way. Make your voice heard.



[Join NWskier
advocates](#)
[Email Newsletter](#)

The NW Snowsports Advocates have several pages on the NWSCC web site devoted to describing the different challenges faced by various ski areas. Check it out and get involved. If we don't stand up for the ski areas, who will?

To find out exactly who needs you help, what you can do about it, and who you can write to, go to:

<http://www.nwskiers.org/nwsa/index.htm>

NWSCC Web Site

The **NW Ski Club Council** web site: www.nwskiers.org

Our club is affiliated with the **NWSCC**, so we are all members. Go to this web site to check out member benefits, trip info, race results, and more. Also, sign up for an email group for regular updates. Three email lists exist, one for general info (NWskiers), one for racers, and one for political action related to ski areas:



[Join NWskiers](#)
[Email Newsletter](#)



[Join PACRAT](#)
[Email Newsletter](#)

MOUNTAIN HIGH SNOWSPORT CLUB

What's New at Ski Areas

December 12, 2004. FREE ON-SNOW DEMO sponsored by the Mountain Shop, along with other local ski shops, and the Ski Industry Representatives.

Come on up and test the newest and greatest skis and snowboards. Mountain Shop staff will be there to offer help.

Mountain Shop will be offering a one day special on the mountain for those who wish to purchase.

December 18, 2004 - FAMILY SKI DAY at Mt. Hood Meadows, with their Kid's Carnival. The NWSCC will try to have some special pricing for showing your NWSCC card. Bring your children and grandchildren for some good clean fun on the mountain! The Ebony Rose Ski Club is already planning to be there, and they're one of the most kid-friendly clubs in the NWSCC!

SUN VALLEY, EXCLUSIVE NWSCC PACKAGE, January 8 15, 2005. Any member of any NWSCC Club can individually purchase any number of nights during this week through Ski Pak, a NWSCC commercial member. Rates are only \$94.50 per person, per night (double occupancy) for lodging and lift ticket. Lodging choices are Sun Valley Lodge or Sun Valley Inn. Airfare is also available from either Seattle or Portland for as low as \$190 including transfers. Call Ski Pak at 1 800 446 4688 and mention the *NWSCC Exclusive Sun Valley Package*.

Club Member Benefits

Look at the NWSCC website at www.nwskiers.org to see an updated list of member benefits and discounts, and check out the FWSA website at www.fwsa.org under Membership to see the current discounts across the western United States and Canada.

Debbi Kor, FWSA Director of Marketing, advises that **Telluride and Sun Peaks are offering special discounts** this year, and that you will find discounts on ski shops, clothing, and rentals!

Maureen Richards of S'No Joke Ski Club has arranged a **half price ski day** for NWSCC club members at **Stevens Pass, Washington, on February 27, 2005.** Show your NWSCC member card at the ticket window to receive the discounted lift ticket. Still checking on Crystal Mountain.

NWSCC members can also obtain benefits through the National Ski Council Federation. A current list of NSCF benefits can be found at www.skifederation.org in the Members Only section. The user name is **skigroup** and the password is **24councils**.

LATEST NEWS FLASH!

Super Bowl Sunday Party

LATEST NEWS FLASH!

DATE: Sunday, Feb. 6, 2005. Kick-off time 2:00 pm.

WHAT: Party at Fred's. Watch your favorite team win (or lose) on a huge 9 ft. wide screen, the ultimate in home entertainment. In between plays, dip into indoor hot tub, or play a round of pool. More details next month!

Welcome New Members

A warm welcome to our new members:

Gail O'Neill

Bob Gales

Wendy Popkin

Julie Moore

Keith Appleman

Dale Stark

Liz Dauw

Shawn Brown

Michael Parsons

Colleen Hankins

Sheridan Marie Lucas

Jim Meyer

John Zevely

Narasimhan Narayanan

William Leeper

Gini Nellis

Kathie Bailey

Lou Bailey

Jon Schrimper

Kristin Schrimper

Michael Osenga

Ann Rawls

Mike O'Brien

Janet Siverts-Smith

Joy Tinker

Tom Brough

Note to other members:
It's time to renew!

Note to other members:
It's time to renew!

MOUNTAIN HIGH SNOWSPORT CLUB



www.nwskiers.org

November 30, 2004

To _____:

I am writing to applaud the decision by the US Forest Service approving the planned improvements and expansion of the Mt. Ashland Ski Area. Winter sports advocates have been looking forward to this for a long time. Skiing is a healthy family activity and the addition of beginner and intermediate level runs will improve the opportunities for parents and children to spend quality time together. The improvements will also benefit the economy of the Ashland community. Mt. Ashland has been working for many years on the expansion plans, investing in scientific studies and encouraging public participation in the process.

The Mt. Ashland Association has demonstrated its commitment to the City of Ashland and the citizens of the community throughout this process. Since the City owns the fixed assets of the ski area and holds the special-use permit from the Forest Service it is essential that the interests of the community be protected. The approved plan has appropriately included a variety of watershed restoration projects designed to improve the condition of the watersheds within which the ski area operates. I am confident that the Association will continue to solicit public input as this project moves forward and the end result will be a model for environmental sustainability.

Over the past 25 years I have spent many summer days and nights attending plays at Oregon Shakespeare Festival. Theatre has been my second passion and I served on the board of Artists Repertory Theatre in Portland for over 10 years. I have occasionally led groups to Ashland for a combination ski and theatre weekend. I know of other clubs and groups who have led similar trips. With the planned improvements to the ski area, this type of trip will be even more attractive. I look forward to introducing more people to skiing at Mt. Ashland and to the incomparable theatre experience at OSF.

I know that there will be appeals of this decision as Mt. Ashland moves to the construction phase. I encourage the US Forest Service and the City of Ashland to stay the course. These improvements are important to the community and to the families who enjoy outdoor recreation together. Our success will be measured by our ability to show that, by working together we can protect the environment and create a healthy recreational experience for the entire community.

Stephen Coxen
 President, Northwest Ski Club Council - www.nwskiers.org
 Past President, Far West Ski Association - www.fwsa.org

*Steve Coxen at an
 NWSCC meeting in
 June 2003.*

*This photo was not part
 of the original letter.
 It was added here for
 the benefit of new
 members who may not
 know Steve yet.*



NOTE: Write your own letter. Important to be done by December 15th. Get more information at the Northwest Snowsport Advocates page at www.nwskiers.org. Please send a copy of your support letters to the persons on the back of this page.

MOUNTAIN HIGH SNOWSPORT CLUB

WHO TO CONTACT

Addresses and Resources

Please send a copy of your support letters to the following persons:

Regional Newspapers

Ashland Daily Tidings
Scot Bolsinger, Editor
P.O. Box 7
Ashland, OR 97520
(541) 482-3456
tidingsopinion@dailytidings.com

Medford Mail Tribune
Robert Hunter, Editor
P.O. Box 1108
Medford, OR 97501
(541) 776-4376
letters@mailtribune.com

Daily Courier
Dennis Roler, Editor
P.O. Box 1468
Grants Pass, OR 97528
(541) 474-3700
droler@thedailycourier.com

Herald and News
Tim Fought, Editor
P.O. Box 788
Klamath Falls, OR 97601
(541) 885-4410
tfought@heraldandnews.com

Siskiyou Daily News
Jean Smith, Editor
P.O. Box 129
Yreka, CA 96097
(530) 842-8777
editor@siskiyoudaily.com

Public Officials

Scott Conroy
Forest Supervisor
Rogue River National Forest
P.O. Box 520
Medford OR 97501
sconroy@fs.fed.us

Linda Duffy
Ashland District Ranger
645 Washington Street
Ashland OR 97520
lduffy@fs.fed.us

Linda Goodman
Regional Forester
Pacific Northwest Region 6
333 SW 1st Ave.
Portland, OR 97204
ldgoodman@fs.fed.us

Dan Harkenrider
Director of Recreation
Pacific Northwest Region 6
333 SW 1st Ave.
Portland, OR 97204
dharkenrider@fs.fed.us

Senator Ron Wyden
516 Hart Senate Office Building
Washington, DC 20510
senator@wyden.senate.gov

Senator Gordon Smith
404 Russell Office Building
Washington, DC 20510
oregon@gsmith.senate.gov

Senator Jason Atkinson
P.O. Box 1931
Jacksonville, OR 97530
Sen.jasonatkinson@state.or.us

Congressman Greg Walden
1404 Longworth HOB
Washington, DC 20515
greg.walden@mail.house.gov

Governor Ted Kulongoski
160 State Capitol, 900 Court St.
Salem, OR 97301
(503) 378-4582
representativecitizen@state.or.us

MOUNTAIN HIGH SNOWSPORT CLUB

Mt. High Crystal Mountain (bus trip) Mt. High

Jan 14-16, 2005. Our annual **Mountain High bus trip.** 2 nights/2 days. We leave Friday around 5:00 pm. Lots of fun on bus. Best way to get to know other club members! We'll return Sunday evening by 8 pm.



Crystal Mountain is right next to Mt. Rainier. It has 3,100' vertical served by 2 six-pack hi-speed lifts, 2 hi-speed quads, 2 triples, and 3 doubles. There is 1,300 acres of lift served terrain, plus 1,000 acres of backcountry.

We'll stay at the Best Western Park Central hotel in Enumclaw, 45 minutes from the mountain.

We'll keep the cost down by using a sliding scale. **The more people, the lower the price** (\$5 less for every additional 2 people). Bring all your friends and save money!

Price (with a minimum 30 people), is \$160 for lodging and transportation. Add \$42 per lift ticket, per day. If you ski both days, the grand total would be \$244. But, it could be as low as \$219, if 40 people sign up.

Deposit \$50 by Oct. 20. Full payment by end of November. Contact **Linda McGavin**, at (503)412-3531, or email Trips3x@mthigh.org.

Mt. Bachelor

March 17 -20, 2005. All clubs are invited to show up at Bachelor on this weekend. A joint NWSCC sponsored party will be held on Saturday night. Check out the multi-million dollar improvements at the Inn of the 7th Mountain. March 18 ski for \$10 with coupon from any Wells Fargo.

Mt. High Big Mountain, MT (by train) Mt. High

February 16-21, 2005. (4 days on snow, 3 nights lodging + 2 nights on train) A fantastic ski trip at a price of only \$475 per person. Join your Mountain High buddies for a 5-day trip to Big Mountain.

We'll leave Portland, via Amtrak at 4:45 p.m. on Wednesday, Feb. 16th, arriving in Whitefish, Montana at 7:30 a.m. on Thursday, ready for a day of skiing. After skiing, we'll check into our beautiful rooms at Grouse Mountain Lodge.



Big Mountain powder

Our package includes:

- * 3 nights lodging;
- * 4 days lift tickets;
- * Round trip train ticket;
- * Ground transport. (to lodge);
- * Full breakfast daily (2 per room)
- * Shuttles to and from mountain
- * Hotel baggage handling, all taxes & fees.



Package rates range from \$400 p/p (4 to a room) to \$425 p/p (3 to a room); to \$475 p/p (2 to a room) for an Executive Deluxe room. Each room has 1 king or 2 queen beds. **Additional options:** \$112 each way for standard sleeper for 2 on Amtrak or \$250 for a deluxe sleeper for 2.

To sign up, send a \$175 deposit to **Debbi Kor**, 7007 SW Iron Horse St., Wilsonville, OR 97070. Indicate your choice of room and if you want a sleeper cabin on the train.

For more information, contact Debbi at 503-682-1563, or click here to email her: ijustwannarun@aol.com.

FWRA**FWRA Championships: Heavenly, Tahoe****FWRA**

March 18 - 20, 2005. 2 or 3 nights/days. All PACRAT racers are pre-qualified to race, but non-racers also welcome, just for fun!

A special package has been arranged at **Horizon Casino Resort** (Last year it was 2 nights for \$111 per person.) Call Horizon Casino Resort to reserve: 1-866-478-8463. Ask for Carol. Mention "Far West".

NWSCC plans to host a room party for any NWSCC club members attending these races. Contact Sheri Parshall at 503-245-3782 or cougskier@aol.com for further details.

Racing fee (slalom & GS) is \$35. Races on Saturday & Sunday. Optional race clinic Friday. Racers pre-register with Dale dale.parshall@usbank.com

MOUNTAIN HIGH SNOWSPORT CLUB

FAR WEST SKI ASSOCIATION

FWSA 2005 SKI WEEK FWSA

January 29 - February 5, 2005

ASPEN/SNOWMASS

\$1380 / \$1,245*

(Lodging at "Aspen Mountain Collection" in Aspen;
or "Woodbridge" in Snowmass - the lower price.)*Only a couple of spots left on this trip!*

Price includes RT Air, 7 nights lodging (dbl occ)
5 days' lift tickets, welcome party, mountain
picnic, fireworks and farewell party.

Contact Debbi Kor @ (503)682-1563 or
email: ijustwannarun@aol.com

Payment of \$600 due September 1
(\$100 cancellation fee after this date)

Final payment \$\$\$ due November 1

*Seniors 65 or older may reduce their price by \$40.

Please make checks payable to **NWSCC**,
PO Box 1915, Portland, OR 97207

Must be a member of FWSA (or affiliated club)

Oregon Cancer Ski-Out

March 6 & 7, 2005. The Oregon Cancer Ski Out (17th annual) is a 2-day fund raiser to contribute to hospice care, cancer research, education and awareness, while enjoying your favorite sport.

Five-member teams compete at Mt. Hood Meadows. The winner is **not** the fastest team, but the most **consistent**. Team registration before Dec. 17 is \$850, after that: \$1000. A deposit of \$200 per team is required to hold your team's space.



Our club has participated with several teams for many years! The photo shows the **Easy Gliders** team, with **Walt Stanton**. Is that Lynn kneeling in front of him?

For more info, and to register, go to: www.cancerskiout.org.

Become a corporate sponsor. Call Larry Chadwick at 503-699-6922.

Volunteer! Call the Ski Out office at 971-221-5872 if you would like to lend a hand to the event.

USRSA

The Nation's 35th Ski Week in Bormio, Italy

USRSA

March 12 - 19, 2005. 7 nights/6 day lifts / 7 full breakfasts / 7 dinners. This is a United States Recreational Ski Association's trip. Round trip air from Los Angeles to Milan, bus transfers, lodging and meals at 2- and 3-star hotels. Total price between: \$1350 - \$1449, depending on hotel. Also: 3-day pre- and post-trip options to visit Florence, Pisa, Pompeii, Isle of Capri, and Blue Grotto.



Grappa tasting party, welcome party, souvenir gift. Our very own Walt and Russ Stanton are going on this trip! Contact Jan Holman, 17410 Coldspring Dr., Reno, NV 89506. Phone: 775-972-9064.



PACRAT Racing

HOT NEWS FLASH!!! Jack Foliard has announced that PACRAT has formed a partnership with **Special Olympics Oregon (SOOR)** to assist in training their athletes who will be going to Nagano for the World Games!! PACRAT will host a SOOR team consisting of the athletes and their coaches at no charge in the PACRAT race program this season! Please welcome these world class athletes to our program!

Our club has 6 full teams, but **some racers have not paid their dues yet**. So, do it now! Use the **Dough Transmittal Form** (on page 11).

The individual racer fees remain at \$85 -- but you still get over \$130 in value for that amount - if you add all the parties, dinner, race course setup, lift ticket discounts, etc. It's the best deal in all of skidom!!!

See www.mthigh.org/Racing

2005 PACRAT Race Dates

- 1/9 Meadows
- 1/23 Timberline
- 2/13 Meadows
- 3/13 Ski Bowl
- 4/3 Meadows
- 4/10 make-up Meadows
- 4/22 Rat Attack party



NWSCC trip to Sunshine Village & Banff, Canada April 17 – 23, 2005

“6 Days & 6 Nights in Majestic Banff National Park!”



ONLY \$810

(USD, Per Person/Double Occupancy)

The Tour Package includes:

- ✓ Roundtrip Coach Airfare between Portland or Seattle and Calgary
Roundtrip Motorcoach Transfers
- ✓ (3) Nights Lodging at the Sunshine Inn in Sunshine Village (ski in/ski out)
Welcome party with one drink & snacks
- ✓ (3) One-Day Lift Tickets for Sunshine Village
- ✓ (3) Nights Lodging at the Banff International Hotel in Banff

**THIS TRIP IS LIMITED TO 30 PARTICIPANTS FROM PORTLAND/SEATTLE!
THIS IS A JOINT TRIP WITH THE LOS ANGELES SKI CLUB COUNCIL.**

Lodging: The **Sunshine Inn** is Banff's only ski-in/ski-out hotel. Nestled in the centre of the Sunshine Village ski area at 7200 feet and accessed via a high speed gondola, the Inn provides a high altitude respite from the crowds of Banff. 3200 acres of skiable terrain greet you outside your room window, and over half of Sunshine Village's lifts are within walking distance of the Inn's front door. With one of the largest outdoor hot tubs in Canada, a European dry sauna, fitness room and massage and chiropractic services, live entertainment, nightly activities, and a large family room with a big screen TV, wood burning fireplace and a pool table, there is always enough happening at nights to keep you busy.

The Banff International Hotel is a deluxe 4-star hotel located in downtown Banff and features a coffee shop, international gift shop, whirlpool, steam room, sauna, ski/snowboard lockers and tune-up room. Dining, shopping and attractions can be reached by simply walking out the front doors. Ski buses stop in front of the hotel.

Once in Banff you will be free to tour, shop, or even ski some more if you desire (optional). Lake Louise is only 20 minutes away, and buses to the ski areas stop by the front door of the hotel on a regular schedule.

Optional Activities: NASTAR style race between NWSCC & the LA Council: \$ 5.00
Pub Crawl/Scavenger Hunt in Banff Thursday night: \$ 10.00

For planning purposes, you will need to sign up for these activities by February 28, 2005.

Deposits: Initial deposit of \$50 is due immediately to hold your spot and is refundable until January 31, 2005. The next deposit of \$250 is due by January 31, 2005. The balance of the trip price, as determined by your lodging and optional activities choices, is due February 28, 2005, and is nonrefundable. **Travel insurance** is available through our tour operator; details and forms will be provided with your confirmation.

For further details or to sign up contact Linda McGavin at 503-412-3531 or Trips3x@mthigh.org. Make checks payable to "NWSCC" and mail to P.O. Box 1915, Portland, OR 97207. Please put "Sunshine Trip" on your check.

Washington Seller of Travel #602-275-142

MOUNTAIN HIGH SNOWSPORT CLUB

Skiing Heritage

There is a renewed interest in preserving the history of our favorite sport. For example, the 2005 Far West Convention will be devoted to the History of Skiing. In Government Camp, the history of skiing on Mt. Hood is being preserved in the Mt. Hood Museum.

The **International Skiing History Association** (ISHA) is one of the best efforts in preserving this kind of history. They operate an excellent web site at www.skiinghistory.org, and they have a very interesting, slick 50-page quarterly magazine.

We recently asked for permission to use some of the historical cartoons and illustrations from their magazine and web site in our newsletter. Permission was granted by Jim Spring, ISHA President. In addition, Jim Spring extended an offer to all out club members. If at least 10 of our members subscribe to the **Skiing Heritage** magazine, they will give us a 10% discount. Regular one-year subscription is \$30. So, that is \$3 off.



The September issue, for example, has articles on:

- the women of skiing before World War I,
- the biography of racer Dick Buek,
- how teaching pioneer Hannes Schneider came to Mt. Cranmore,
- the Silver Skis competition on Mt. Rainier

Check out the web site, and if interested in subscribing, send a check for **\$27** made out to the **International Skiing History Association**, and mail it to **Emilio Trampuz**, 4742 Liberty Rd. S., #296, Salem, OR 97302. I assume we need to submit our first 10 subscriptions in a single bundle, to show we really are 10.



Skiing in the 1800s often ended in a yard sale. Well, not much has changed!!! Except that single-pole technique!

Our own history

Where and how did you learn how to ski? Remember your first ski trip? Who did you ski with? Were you already a member of a ski club? How much did you spend on your first pair of skis? How was your technique 20 years ago?

Send us your stories, and your photos from way back then, and we'll publish them.



"God how wonderful, I hope this is not just a fad." - German humor tabloid Simplicissimus, 1910

SNOW CONDITIONS:



**Often referred to by resort owners as "hard-pack"*

MOUNTAIN HIGH SNOWSPORT CLUB

Day Trips to Mt. Hood - 2004/05

Dec. 19 (Sun.) Join us for a day of skiing on Mt. Hood. This newsletter will arrive too late, but this info has been posted on the web since Nov. 26. We'll meet at 7:00-7:15 am at McDonald's in Sandy, and carpool or caravan to Meadows. On the slopes, you can contact us on radio **channel 6-19**. Just ask for Mt. High!

Sundays. Throughout the season, we'll have informal day-outings. Any time there is a PACRAT race, on Sundays, we invite non-racers to join us for a day on the slopes. Meet at McDonalds in Sandy, 7:00 am. **Channel 6-19**.

Mid-week. Get your name on the mid-week skiers' list by emailing: **Harry & Lisa Scribner**, at scribs3@comcast.net. This group uses **Channel 11-7**.

Plaza/Edgset Meeting

First Tuesday of the month.

Jan. 4 (Tue.): Our Board meeting, open to all. Get involved with the club. Gather at 6:30 pm. Formal part of the meeting starts at 7:00 pm.

New Location: **Godfather's Pizza**, near corner of Capitol and Barbur Blvd.

Plaza / Edgset Ski Club Contacts:

General information: info@MtHigh.org

- President:** Gary Stevenson, H: 503-257-6368,
- Vice-President:** Terry White, H: 503-297-1427, W: 503-296-6075, TWhite223@msn.com
- Secretary:** Sue Bennett, H: 503-774-8747, OptomistSue@aol.com
- Treasurer:** Kurt Krueger, H: 503-625-1492, W: 503-627-4363, Kurt.D.Krueger@tek.com
- Race Director:** Gordy Lusk, H: 503-804-8363, GordySki@comcast.net
- Newsletter Editor:** Emilio Trampuz, H/W: 1-503-378-0171, info@mthigh.org
- Activities Director:** Jaxine Harris, H: 503-699-3341, W: 503-657-2411, JaxineAH@msn.com
- NWSCC Rep:** Debbi Kor, H: 503-682-1563, W: 988-5321 x 225, Ijustwannarun@aol.com
- Trip Directors:** Marsha Cosgrove, H: 503-646-5292, W: 503-799-2833, HappyHairdresser@msn.com
Linda McGavin, H: 503-652-2840, W: 503-412-353 Trips3x@mthigh.org
Larry Bennett, H: 503-760-2360, BENNETT896@aol.com

DOUGH TRANSMITTAL FORM

Make check payable to: "Mountain High Snowsport Club"

Mail to: Mountain High Snowsport Club, PO Box 2182, Portland, OR 97208.

For **Crystal Mtn**, mail to: Linda McGavin, 1100 S.W. Sixth Avenue, Suite 1600, Portland, OR 97204.

For **Big Mountain**, mail to: Debbi Kor, 7007 SW Iron Horse St., Wilsonville, OR 97070.

Name(s): _____

Address: _____

Phone (Hm): _____ Phone (Wrk): _____

Email (Hm): _____ Email (Wrk): _____

Please take my money, and apply it toward the following Ski Club fun stuff: Details
Deposit? Paid in full?

Membership Dues (for 2004/2005): Single (\$25) couple (\$40) \$ _____

PACRAT Racing Total: \$85 Team name: _____ \$ _____

Crystal Mtn. bus trip (Jan 14-16): Total: \$244 __ Deposit \$50 \$ _____

Big Mountain (Feb 16-20): Total: \$475 __ Deposit \$175 \$ _____

Big Mountain train sleeper (optional) Standard \$112pp. round trip \$ _____

Comments (For whom you are paying. Roommate requests, etc.): _____

NEWSLETTER DISTRIBUTION

The December 2004 issue of "Lift Lines" is being distributed as follows:

160 copies electronically, via email (154 as HTML, 6 as plain text, but both have the PDF file attached)

47 paper printed copies sent via US Mail.

Some of these are sent to non-members (the NWSCC, FWSA, other clubs, etc.).

Please help us minimize the cost and labor involved in mailing out paper copies. **Let me know if you have an email address** Call Emilio at 1-503-378-0171 or email: Emilio2000@Earthlink.net.

Our Club in a Nutshell - on CD

Get a CD containing a PowerPoint slide presentation with several hundred photos of our club (including trips, parties, PACRAT racing, and humor). Show it to all your friends.



Only \$3. Contact Emilio.

New 15-month Far West Calendar

Great snow-related, Far West Ski Association calendar is now available for purchase, It covers 15 months, from October 2004 to December 2005. Only \$10.



You can get your copy from Debbi Kor. Contact her at: 503-682-1563, or email: ijustwannarun@aol.com.

Emilio Trampuz
Plaza/Edgeset Newsletter editor
4742 Liberty Rd. S., #296
Salem, OR 97302

NOTE: Please let us know if you have an email address! Lots of info is sent via email in between newsletters.

