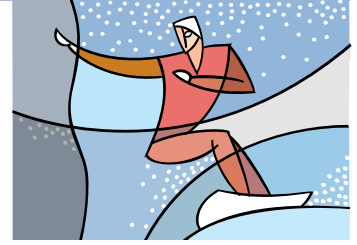




Lift Lines

== No. 44, August 2004 ==

Plaza/Edgeset Ski Club, PO Box 2182, Portland, OR 97208



Hi fellow skiers & boarders!

Even in the summer, our calendar is full of events. We just returned from a 2-day rafting trip, then had the Bridge bike ride, and next are two food events. And get ready for Night Golf and Seafood Social in September!

Our web site, www.mthigh.org continues to be updated. Some pages are static, but the one page most likely to change, and the one you should bookmark and check often is the Calendar of Events page, www.mthigh.org/Events.

Note that we are keeping only a few club photos on our web site, showing off samples of our activities (trips, parties, racing, social events). A more detailed series of photo albums, including the recent rafting trip, is kept on Snapfish.com, where you can order your own prints. Just click on the **Photo Albums** link on our web site. *Emilio*

Crawdads Anyone? In Tualatin

Aug 13 (Fri). To celebrate the 54th annual Tualatin Crawfish festival (the oldest crawfish fest in the nation) Mt. High will rendez-vous for an evening of munchies, music, & merriment.

Where: Tualatin Crawfish Festival
Tualatin Commons, by the lake,
in the heart of Tualatin.
8185 SW Tualatin-Sherwood
Rd, Tualatin

Date: Friday August 13th

Time: 4:30 - anytime after work

Admission: Friday is free but bring \$
for food and drinks.

Details: Friday Festival Schedule

5 pm - **Kayaking** - on the lake at
the commons

5-9 pm - **The crawfish cook-off !**

Area restaurants compete with unique crawfish recipes. Formal judging takes place, as well as public judging (that's us) with plenty of tastings to go around. Tastings are served in a sample size for one ticket, (one ticket = one dollar) and dinner sizes are additional tickets. Whole craw-fish are \$6.00/ doz. There will be other foods available besides crawfish.

6:30-8:30 pm -**Entertainment** -Featuring: Gayle Force and The Windbreakers Dance and Show Band. "A seriously fun band combining 'Mae West, Aretha Franklin, Della Reece, and Queen Latifa'."

Questions: call Jaxine @ 503-699-3341. **SEE YOU THERE!**



IN THIS ISSUE

- * Seafood, ... & more seafood!
- * Our Rafting trip
- * Mt. Hood Heritage Day
- * PACRAT race dates

Note the color code
change. Club is blue.

2004 CALENDAR

Blue: Plaza/Edgeset events
Red: NWSCC/FWSA events
Black: General events

Aug. 8 (Sun.) Bicycle Ride.

Aug. 13 (Fri.) Crawfish Festival

Aug. 14 (Sat.) The Bite of Oregon, 4pm.

Aug. 21. NWSCC Sternwheeler Dinner Cruise. 7 - 11 pm.

Sept 7 Club Board meeting (see p. 7)

Sept. 11. Night Golf! At Sah-hah-Lee

Sept. 18. Mt.High End-of-Summer Seafood Social at 2:00 pm.

Sept. 25 (Sat) Mt. Hood Heritage Day:
music, food, history, Govt. Camp.

Nov. 5-7. Portland Ski Fever Show at
the Expo Center.

Nov. 9. Ski Fair. At Monarch Hotel.

Dec. 9-14. Beaver Creek & Vail trip

Jan. 14-16. Crystal Mtn. (WA) bus trip.

**Jan. 29 - Feb. 5. Aspen/Snowmass
Far West Ski Week**

Feb. 16-20. Big Mtn. (MT) train trip.

More trip info, race results etc. at:
WWW.NWSKIERS.ORG

MOUNTAIN HIGH SNOWSPORT CLUB

UPCOMING

A Bite of Oregon



Aug 14 (Sat.) After eating your weight in Crawfish Friday evening Aug 13th, at the Crawfish festival - LET'S DO IT AGAIN - A gastronomical gourmet feast at the Bite of Portland. Note: The Bite has changed its name this year to "The Bite of Oregon".

WHERE: Wine Garden
at the Bite

DATE: Saturday Aug 14th

TIME: 4:00 PM

ADMISSION: \$5

QUESTIONS: Call Jaxine 503-699-3341

SEEUOTHER!



Welcome New Members

A warm welcome to our new member:

Bob Lawrence (since Feb. 04)

Rosie Weber (since July 04)

Welcome to the club!

More Than You Would Ever Want to Know About a Crawdad !

Provided by Jaxine Harris



Q. What do these three words have in common:
crawfish, crayfish, and crawdad?

A. All three words refer to the same little critter; a crustacean resembling a lobster, but much smaller.

Q. Why does Tualatin have a crawfish festival?

A. Because crawfish were once abundant in the Tualatin River, and the community of Tualatin wanted a theme for a festival, so in a "PINCH" - it was a cinch to pay omage to the CRAWDADDY.

Q. Where is the "crawfish capital of the world"?

A. In Louisiana around the Mississippi Basin. Crawdads are also abundant in Kentucky - in the Mammoth Cave area.

Q. Where are crawdads usually found?

A. They are common in streams and lakes and often hide under rocks and logs.

Q. What's the life of a crawdad like?

A. Crawdads live usually less than two years, (poor things), are more active at night feeding and make great bait as they are eaten by trout and bass.

Q. Is the crawdad a popular food for cooking and for use in recipes?

A. Yes !! It is very popular in French cooking and is called 'e crevisses. (Crev'ice :N=a rack; fissure) (Crevasse' :N=a crack, as in a glacier or levee). And, speaking of levees, don't forget those unique flavors of Creole cook'en from Louisiana- remember, it's "the crawdad capital of the WORLD".

Crawfish can be prepared in most ways appropriate for lobster; and, like lobster, turns bright red when cooked.

Q. Where do all the crawdads come from for the festival?

A. They are supplied by Pacific Seafoods, and are from Lake Billy Chinook in Oregon.

MOUNTAIN HIGH SNOWSPORT CLUB

UPCOMING

UPCOMING

Sternwheeler Dinner Cruise

Mt. High Seafood Social



What: Northwest Ski Club Councils 25th Anniversary Party
Where: On board the Sternwheeler Rose 1945 SE Water Ave (Free parking just south of OMSI)
When: Saturday, August 21st, 7:00 p.m. til 11:00 p.m.

Are you ready for a cruise? Slip on your flip-flops, grab your Island gear and join us for an evening on the Wild Willamette.

\$45 per person will reserve you a spot on the "Boat to Margaritaville. Feast on fajitas, and dance the night away to Randy Frees DJ Sounds.

On board activities include:

- Wheel of Fortune: 3 tries for \$1
Silent Auction: Donated items by our Commercial sponsors
Raffle Items: Tickets —\$5 per yard
No host bar with a featured 25th Anniversary drink.

Contact: Mary Olhausen omary@teleport.com / (360)892-1814
Debbi Kor ijustwannarun@aol.com / (503) 682-1563
Diane Hicks dskier1@aol.com / (503) 253-5086

Sept. 18 (Sat.): Annual End-of-Season Party.
WHAT: The month of Sept. is synonymous with our annual seafood social. This marks the wind-down of sizzling summer scenarios and the gearing up for frivolous fall fun.

HOSTED BY: JAXINE HARRIS, activities director

DATE: SATURDAY SEPT 18

TIME: 2:00 PM - UNTIL ?
staring early to enjoy the lake

LOCATION: BAYROC APTS.
668 MCVEY # 30
LAKE OSWEGO (on the lake)

CLUB PROVIDES: the main course: seafood/fish and soft drinks

YOU BRING:

FOOD: a side dish, appetizer, or dessert, & libations of choice.

OTHER: lawn chair (a must), rubberraft, kayak. (life jacket if you bring those things), fishing pole (remember your license). I have access to at least one canoe, maybe two.

HERE'S THE SCOOP:

If it doesn't rain, we'll gather on the pavilion in the middle of the bay, which is right next to my apartment unit. Easy access, and have a grrreat time. Ducks, geese and Mr. Heron will amuse you.

IF it rains, (but it won't - think positive) we will " huddle together like sardines" in my apartment and give NEW meaning to the words 'SEAFOOD SOCIAL" and still have a grrreat time. Yes, my apartment is SMALL but cute.

RSVP by sept 14 th to: Jaxine, 503-699-3341.

DIRECTIONS:

- 1. In Lake oswego get on State Street which is the main street
2. Go south on State (towards Marylhurst and Oregon City)
3. At the south end of L.O. is an intersection (a bad one). State and McVey meet. The Bay Roc apartments are on the lake side at the intersection. George Rodgers Park is on the other side of State street.

PARKING:

- 1. Option one: Park by George Rodgers Park. Use the walk signals to cross State street, please.
2. Option two: Park in the covered parking lot on McVey street that is next to the Bay Roc apt. on the lake side.

Mid-Week Golf

Anyone interested in getting together for mid week golfing call Gary Stevenson at 503 257-6368. He will schedule a tee time on Tuesday evenings somewhere. Call to reserve a spot.

Night Golf

Sept. 11. (Sat.) Our glow-in-the-dark balls will come alive at Sah-Hah-Lee golf course, Sept. 11. Cost: \$45 pp.

Contact Sue Bennett at: 503-774-8747 or email her at: OptomistSue@aol.com

MOUNTAIN HIGH SNOWSPORT CLUB

UPCOMING

Mount Hood Heritage Day

Sept. 25, 2004 (Saturday).

WHAT: A celebration of the history of skiing on Mt. Hood organized by the Mt. Hood Cultural center and museum. There will be a collectibles sale, antique appraisals, museum open house, historic vehicle and car show, music, food vendors, silent auction and more.



WHERE: Government Camp

DATE: Saturday, Sept. 25th 2004

TIME: 10:00 am to 5:00 pm

DETAILS: Various clubs and organizations are participating by having a booth that showcase themselves.

Our own Mt. High snowsport club has made a commitment to support the Heritage of the mountain. We will have a booth spotlighting our own heritage and entice new members.

HELP! We need volunteers to help "people the booth". Come up for the DAY and PLAY! MEET and GREET new and old friends at the booth for an hour or two.

Jaxine, Emilio, Debbi and others have already volunteered, but we need more. Contact Jaxine and we'll put you on a sign up sheet for your slot of time so we'll be organized. Contact the number below. THANKS!

CREATIVE IDEAS: Think out of the box for some presentation ideas for our booth. Does any one have any 1970's ski attire or equipment that you need to unload. We could use them perhaps, and certainly the museum could.

SEE YOU THERE !

JAXINE
503-699-3341



PAST TRIP

River Rafting Weekend

July 30 - 31, 2004. We camped out, we rafted, talked like pirates, sang the theme song from Gilligan's Island, we had water fights, a great dinner, and a great time!

It was like a Lewis and Clark expedition, but with Louis and Gordy instead! Special thanks to **Gordy** for putting it all together. And special thanks to **Louis** for shuttling 19 people in his SUV on Friday and a record 22 people in the same vehicle on Saturday!

And what a deal! Most outfits charge \$75 for a single run. For the same price, we did it 3 times! Once on Friday, and two times on Saturday. Dinner & camping were included!

About 30 of us rafted at any one time, but almost 40 participated. Some came just for the camping. Others had to leave early.

We swam through the Elevator rapids, and found a natural water slide on the White River which empties into the Deschutes.

We have already set the dates for next year! Mark it on your calendar: **July 16-17, 2005.**

For more photos, go to the **Photo Albums** on our web site, or click on: <http://www.snapfish.com/share/p=91371091933735403/1=31308535/cobrandOid=1000111>



Louis at the helm!

How to View Photos Anonymously

If you click on the the Photo Albums, you will be asked to register on Snapfish, with an email address and a password.

If you don't like that, ... if you'd rather remain anonymous, then use our club's generic email address. Log in as a registered Snapfish member and enter the following:

Email address: photos@mthigh.org

Password: **photos**

MOUNTAIN HIGH SNOWSPORT CLUB

TRIPS

NWSCC

Beaver Creek & Vail, CO

NWSCC

December 9 - 14, 2004. Northwest Ski Club Council presents an early season trip to Beaver Creek and Vail. Colorado has seen terrific snow conditions in December over the last three years. You can expect awesome skiing and the wonderful Beaver Creek and Vail experience, without the crowds. We will be staying in excellent accommodations in Beaver Creek at the Highlands Lodge/Westview condominiums near the lifts, restaurants and shops. This is a joint trip with San Diego Council. Northwest Council is limited to 48 spots, so reserve your spot as soon as possible.

PACKAGE PRICE - \$735 - includes:

5 nights lodging at the Highlands Lodge Condominiums
 3 days, all-day lift tickets at Beaver Creek & Vail
 Additional daily lift tickets at \$31 each
 Airfare to Denver from Portland or Seattle
 Ground transportation to Beaver Creek
 Joint activities with San Diego Council
 Council Party



Beaver Creek

Payment Schedule:

* Now until September 1, 2004 - Accepting deposits of \$50 to reserve a place on the trip.

* October 1, 2004 - Full payment due

Make checks payable to NWSCC. Mail to Steve Coxen, 620 N. Hayden Bay Drive, Portland, OR 97217. Contact Steve Coxen at 503-285-7491 or email: sacoxen@aol.com.

Mt. High

Big Mountain, MT (train trip)

Mt. High

February 16-20, 2005. (4 days on snow, 3 nights lodging + 2 nights on train)

What would you say to an absolutely fantastic ski trip at an especially fantastic price of \$475 or less per person? Sound good? If you think so, join your Mountain High buddies for a 5-day trip to Big Mountain beginning February 16th, 2005, returning on Monday, February 21st.

We will leave Portland, via Amtrak at 4:45 p.m. on Wednesday, February 16th, arriving in Whitefish, Montana at 7:30 a.m. on Thursday, ready for a day of skiing. After skiing, we will check into our beautiful rooms at Grouse Mountain Lodge. Our package includes:

Round trip rail transportation from Portland to Whitefish;
 3 nights lodging at Grouse Mountain Lodge;
 Ground transportation from train to lodge;
 4 days lift tickets;
 Full breakfast daily (based on dble occupancy - addtl persons w/be charged)
 Shuttles to and from mountain
 Hotel baggage handling, All taxes and fees.



Big Mountain powder

Package rates range from \$400 p/p (4 to a room) to \$425 p/p (3 to a room); to \$475 p/p (2 to a room) for an Executive Deluxe room. Each room has 1 king or 2 queen beds. Additional options: \$112 each way for standard sleeper for 2 on Amtrak or \$250 for a deluxe sleeper for 2.

To sign up for this trip, send your \$50 deposit to **Debbi Kor**, 27141 SW Aden Ave., Wilsonville, OR 97070. Please indicate your choice of room and whether you will want a sleeper cabin on the train.

For more information, contact Debbi at 503-682-1563, or click here to email her: ijustwannarun@aol.com.

MOUNTAIN HIGH SNOWSPORT CLUB

FAR WEST SKI ASSOCIATION

2005 SKI WEEK

January 29 - February 5, 2005

ASPEN/SNOWMASS

Prices from approx. **\$1380 / \$1,245***
(Lodging at "Aspen Mountain Collection" in Aspen; or
"Woodbridge" in Snowmass - the lower price.)

Price includes RT Air, 7 nights lodging (double occupancy) and the FWSA amenities package.....

- Registration
- Welcome Party
- 3 Races
- Mountain Picnic
- Apres Ski Party with Fireworks
- Farewell Awards Banquet
- 5 of 7 day lift ticket for:

Aspen Mountain, Aspen Highlands, Buttermilk & Snowmass

Contact Debbi Kor @ (503)682-1563 or email:
ijustwannarun@aol.com

First payment of **\$50** is due **NOW**.

2nd payment of **\$250** due July 1 (Full refund available)

3rd payment of **\$500** due September 1 (\$100 cancellation fee)

Final payment **\$\$\$** due November 1

*Seniors - 65 or older may reduce their price by \$40

Please make checks payable to **NWSCC**, PO Box 1915, Portland, OR 97207
Must be a member of Far West Ski Association CST#2036983-40
(Note: All members of our club are automatically members of the FWSA.)



Crystal Mountain (bus trip)

Jan 14-16, 2005. (Tentative date.)

Our annual **Mountain High bus trip**. 2 nights/2 days. We leave Friday around 5:00 pm. Lots of fun on bus. Best way to get to know other club members! We'll return Sunday evening by abt. 7 or 8 pm.



We'll try to keep the total cost around **\$200**, and maybe, like last year, on a sliding scale. **The more people, the lower the price** (approximately \$5 less for every additional 2 people). So, bring all your friends and save money!

Contact **Linda McGavin**, at (503)412-3531, or email:
BMcGavin@easystreet.com

Mt. Bachelor

March 17 -20, 2005.

All clubs are invited to show up at Bachelor on this weekend. A joint NWSCC sponsored party will be held on Saturday night.

NWSCC

Sunshine Village/Banff, Canada

NWSCC

April 17 - 24, 2005. 7 nights/7 days. NWSCC trip. This area is famous for its spring snow, including some big powder dumps. Some of us skied there in 10" of fresh powder two year ago in April!



Tentative plans call for 3 days of ski-in ski-out at Sunshine Village (accessible only by gondola), and then 4 nights in Banff, to enjoy the town or explore other ski areas (Lake Louise, Norquay).

You'll see lots of wildlife! Mountain goats near Sunshine, and elk or moose in Banff.

Contact Linda McGavin, at: 503-412-3531, or email at:
lindam@mcewengisvold.com.

MOUNTAIN HIGH SNOWSPORT CLUB

2005 PACRAT Race Dates

from Jack Folliard

- 1/9 Meadows
- 1/23 Timberline
- 2/13 Meadows
- 3/13 Ski Bowl
- 4/3 Meadows
- 4/10 make-up Meadows
- 4/22 Rat Attack

Mountain Home for Sale

Camille Frederick wants you to know she is not leaving Timberline, but if you know of anyone interested in purchasing a mountain home please send them her way. Call: 503-622-3733.

Details are listed at:
www.forsalebyowner.com
 listing #20112822

Plaza/Edgset Meeting

First Tuesday of the month.

Sept. 7 (Tue.): This meeting is devoted to reviewing our Rules & By-laws. Start at 7:00 pm.

Location: **Gourmet Stuff Pizza**, 4200 SW Mercantile Dr., Lake Oswego, OR 97035. 503-635-1313.

Plaza / Edgset Ski Club Contacts

General information: info@MtHigh.org

- President:** Gary Stevenson, H: 503-257-6368,
- Vice-President:** Terry White, H: 503-297-1427, W: 503-296-6075, TWhite223@msn.com
- Secretary:** Sue Bennett, H: 503-774-8747, OptomistSue@aol.com
- Treasurer:** Kurt Krueger, H: 503-625-1492, W: 503-627-4363, Kurt.D.Krueger@tek.com
- Race Director:** Gordy Lusk, H: 503-804-8363, GordySki@comcast.net
- Newsletter Editor:** Emilio Trampuz, H/W: 1-503-378-0171, Emilio2000@Earthlink.net
- Activities Director:** Jaxine Harris, H: 503-699-3341, W: 503-657-2411, JaxineAH@msn.com
- NWSCC Rep:** Debbi Kor, H: 503-682-1563, W: 988-5321 x 225, Ijustwannarun@aol.com
- Trip Directors:** Marsha Cosgrove, H: 503-646-5292, W: 503-799-2833, HappyHairdresser@msn.com
 Linda McGavin, H: 503-652-2840, W: 503-412-3531 BMcGavin@easystreet.com
 Larry Bennett, H: 503-760-2360, BENNETT896@aol.com

DOUGH TRANSMITTAL FORM

Make check payable to "Plaza/Edgeset Ski Club"

Mail to: Mountain High Snowsport Club, PO Box 2182, Portland, OR 97208.

For Big Mountain, mail to: Debbi Kor, 27141 SW Aden Ave., Wilsonville, OR 97070.

Name(s): _____

Address: _____

Phone (Hm): _____ Phone (Wrk): _____

Email (Hm): _____ Email (Wrk): _____

Please take my money, and apply it toward the following Ski Club fun stuff: Details
Deposit? Paid in full?

Membership Dues: Single (\$25) couple (\$40) - for next season - \$ _____

Big Mountain (Feb 16-20): Total: \$475 __ Deposit \$50 \$ _____

Big Mountain train sleeper (optional) Standard \$112 for 2 per night \$ _____

Comments (For whom you are paying. Roommate requests, etc.): _____

NEWSLETTER DISTRIBUTION

The August 2004 issue of "Lift Lines" is being distributed as follows:

145 copies electronically, via email (138 as HTML, 7 as plain text, but both have the PDF file attached)

48 paper printed copies sent via US Mail.

Some of these are sent to non-members (the NWSCC, FWSA, other clubs, etc.).

Please help us minimize the cost and labor involved in mailing out paper copies. **Let me know if you have an email address** Call Emilio at 1-503-378-0171 or email: Emilio2000@Earthlink.net.

New Arrivals: the Mant Twins

Phil and Sylvia Mant had twins on June 29, 2004. The Mant twins! Hmmm, sounds good! A bit like "the Mahre brothers"! You might be looking at future world champions!



Presenting Colin and Simon Mant. Shhh! Let them sleep!
Congratulations, Sylvia and Phil!

New 15-month Far West Calendar

Great snow-related, Far West Ski Association calendar is now available for purchase. It covers 15 months, from October 2004 to December 2005. Only \$10.



You can get your copy from Debbi Kor. Contact her at: 503-682-1563, or email: ijustwannarun@aol.com.

Emilio Trampuz
Plaza/Edgeset Newsletter editor
4742 Liberty Rd. S., #296
Salem, OR 97302

NOTE: Please let us know if you have an email address! Lots of info is sent out in between newsletters.

