



Lift Lines

= No. 188, August 2016 =

Mountain High Snowsport Club, PO Box 2182, Portland, OR 97208



Grab the last of Summer. Plan your Winter.

Summer is flying by fast. Just a few more summer events in August: the Mt. Hood History bike ride (Aug. 6), the Rafting trip (Aug. 11-14), and our annual club Picnic (Aug. 20).

After that, we'll have 2 more bike rides in September and October and our annual Seafood Party. But that takes us into Fall.

Winter is just around the corner, and our winter tips are all set up already. See them listed on pages 7-10. You can start signing up by sending in a deposit. All our trips are expected to fill up fast.

Also read why the Fusion Pass is important this year. How does 6 or 7 free ski days on our trips sound like? See page 6.

No Ski Fair this year

Please note that there will be no **Ski Fair** this year. Instead, our club will have a booth at the Portland Ski Fever Show. Your best time to renew your membership will be at the **Ski Show** (Nov. 4-6) or at our season **Kickoff Party** (November 7). Or, you can do it by mail at any time, especially if you are signing up early for some of our trips.



Mt. Hood History bike ride Aug. 6



Rafting weekend, Aug 11-14



Picnic bike ride: Aug. 20



Picnic, Aug. 20

In this issue

- * First wagon of the season
- * Fusion Pass deals
- * Mt. Hood History bike ride
- * Rafting weekend
- * Mt. High Picnic
- * Winter trips

Note the color code.
Our club is blue.

2016 CALENDAR

Blue: Mountain High events
Red: NWSCC / FWSA / Multi-club
Black: General events

AUGUST

Aug. 6 (Sat.): History bike ride - Barlow Pass
Aug. 11-14: Rafting - Deschutes River
Aug. 20 (Sat.): Mt. High Picnic & bike ride
Aug. 29 (Mon): Mt. High Board meeting

SEPTEMBER

Sept. 17 (Sat.): Bike ride (TBA)
Sept 24 - Oct. 8 FWSA Scuba Dive trip - Fiji

OCTOBER

Oct. 1 (Sat.): Mt. High Highway Cleanup
Oct. 8 (Sat.): Bike ride (TBA)

NOVEMBER

Nov. 4-6: Portland Ski Fever Show
Nov. 7 (Mon.): Mt. High Kickoff Party

2017

JANUARY

Jan. 19-22: Mystery trip
Jan. 28 - Feb. 4: FWSA Ski Week - Breckenridge

FEBRUARY

Feb. 12-18: Utah trip - Salt Lake City
Feb. 25 - Mar. 4: Powder Alliance trip
- Whitewater, BC + Schweitzer Mt., ID

MARCH

Mar. 12-19: FWSA European ski week
Mar. 17-19: Leavenworth trip

Two bike rides with Jackie & Dick Bonillo “Neighborhood Greenway” and “Bike to the Dike”



Photo by Jackie Bonillo

July 9, 2016. (Saturday) - Neighborhood Greenway ride

A small group of just 7 people showed up. Some Bergies, some Mt. High. We lucked out with good weather. The 30 mile ride was the most some people had ever ridden in a day. The ride was awesome. It turned out to be a good social ride.

July 10, 2016. (Sunday) - Bike to the Dike in Troutdale.

11 people participated. We thought this ride was just 17 miles, but it actually turned out to be 21 miles.

Everyone enjoyed it. For several people, it was a first to see the historic Indian home and first time on that dike. The photo shows Sunday's riders.

“The First Wagon of the Season”

June - July, 2016.

During the years of the great migration of Oregon pioneers, roughly between 1846 - 1880s, the only road around Mt. Hood was Barlow Road, opened by Samuel Barlow in the Spring and Summer of 1846. Unfortunately, not only was that road in poor shape to begin with (more of a forest trail than a real road) but it was not well maintained either.

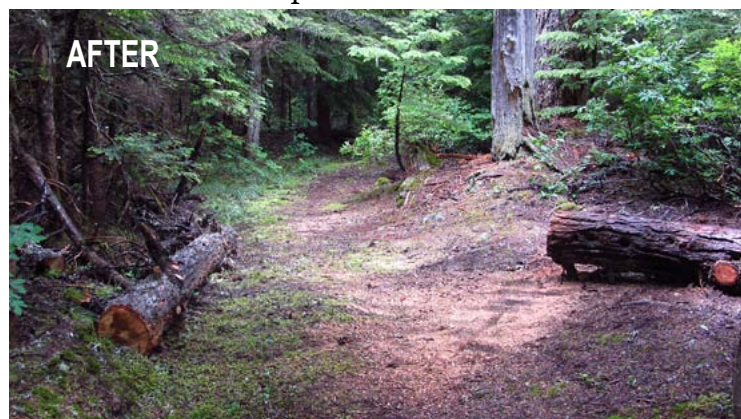
Each year, winter storms brought down lots of trees and branches, many of them blocking the path. It usually fell to the first wagon train of the season to clear the path for themselves and for the benefit of others behind them.

This year (2016), the first “wagon train” of the season was Emilio Trampuz. He spent around 40 hours throughout June and July clearing the path for us, getting it ready for the Mt. Hood History bike ride. This was much more time than in earlier years, partly because a new way had to be found around the area recently destroyed by blasting around highway 26. The blasting destroyed two “ramps” next to highway 26. These “ramps” were actually remnants of the old Mt. Hood highway. Fortunately, the Oregon pioneers came to the rescue. They had blazed their trail very near the old highway, and their path now helps us to descend down to highway 26.

Here's an example of the trail clearing just a mile west of Government Camp:



BEFORE



AFTER

See many more recent event photos at www.mthigh.org/Photos.htm.

Mt. High

Mt. Hood History tour bike ride



August 6 (Sat.) - Start from Rhododendron at 9 am. Explore Mt. Hood's history. Follow the original **Oregon trail** from **Barlow Pass** to Rhododendron.

We'll explore **local lore** and **trivia** about Mt. Hood, its ski areas, its roads, its people. There will be stories, ghosts, cemeteries, local heros, and more.

This is more than a bike ride. It's more like time travel, visiting 3 or 4 different eras.

Do you need a mountain bike? No. Almost any bike will do, except racing bikes with skinny tires. Part of the ride will be on unpaved but smooth roads or paths. The total distance is 16 miles, most of it downhill, but about a mile and a half is uphill. Also, there will be some walking our bikes through narrow spots.

1. See several sections of the original **Barlow Trail** you haven't seen before. **We found some hidden spots!**
2. Bike down parts of the **old Mt. Hood highway**, before the modern Highway 26 was built.
3. Visit the **Pioneer Woman's Grave**.
4. Visit **Summit Prairie** (aka Summit Meadows), one of the last rest stops on the Oregon Trail.
5. Hear the **ghost of Perry Vickers**, who is buried at Summit Meadows.
6. See **Laurel Hill**, the steepest part of the historic Barlow Trail, so steep the pioneers had to lower their wagons with ropes, or tie tree trunks to the back of the wagon to act as a brake. Access to Laurel Hill might not be possible because of the ongoing work on highway 26.
7. Visit a **bat cave**. Or would you prefer a **horse tunnel**?
8. Visit **Little Zig Zag Falls**. Or sit down at a picnic table to rest your legs here.
9. At the end of the ride, let's go for a drink and some food at the **Still Creek Inn** in Rhododendron, partly as thanks to them for letting us use their parking lot, and partly to rest and enjoy each other's company, while replenishing our energy.



Meet at the **Still Creek Inn** in **Rhododendron** at 9 am. We will leave a few cars there, shuttle our bikes to Barlow Pass, and then bike back to Rhododendron for lunch.

Please RSVP if you are coming! Contact Emilio: Emilio2000@earthlink.net or 503-378-0171.



Mt. High

Deschutes River Raft Weekend



Aug 11-14, 2016. Our annual tradition is back for your fun and enjoyment! A weekend of rafting and frolicking in the sun on the Deschutes River at Maupin, Oregon.

Contact: Allan & Beth Paraskeva

at 503-201-1243 or alnbeth@gmail.com

Reservation & payment deadline: August 1st.

Camping: Thursday, Friday and Saturday night in Maupin City Park. Camp sites at new location (see next page). RV space available for an additional \$25 a night. Kids (8-20) are welcome and are the respon-

sibility of the parent at a cost of \$50.

Rafting: (Row, Paddle or just ride) Friday and Saturday. We'll provide the rafts. On Friday, we'll assemble at Maupin City Park and then raft 11 miles from Harpham Flat to Sandy Beach. On Saturday, we'll start from the mid-point and raft downstream in the morning, and then do the upper half in the afternoon (to avoid the crowd).

Food: Saturday night dinner will be potluck. For other meals (breakfasts, lunches, Friday dinner), bring your own food and drinks, or plan to dine in any of Maupin's fine dining establishments. Also, bring quarters for the showers!

Camping & rafting = \$75.00 pp, (Non-members \$90.00)

RV space is available for an additional \$25 per day. or \$75 total.

NOTE: The Deschutes River is dam controlled, so water levels are not an issue.

To sign up, use the Dough Transmittal form, page 13, or print the form from our web site. See the [Forms](#) page at: <http://www.mthigh.org/Forms.htm>.



For maps and directions, see:

www.mthigh.org/Rafting/Rafting-2016.pdf



Mt. High

Mt. High Picnic



August 20, 2016. (Saturday)

Our annual picnic in **Sellwood Park** is a great place to celebrate summer, meet other club members, and find out what else is going on in the club.

The picnic will be preceded by an easy bike ride up the Willamette river and back down the other side.

9:30 am Bike ride (meet at the lower parking lot);
11:30 am Picnic starts. 12:00 noon Food served.

See more at: www.mthigh.org/index.htm#Picnic

Contact **Debbi Kor**, ijustwannarun1@comcast.net



Mt. High

Mt. High Cookbook



whatever!

Please send your contributions to Debbi Kor,
ijustwannarun1@comcast.net

Please contribute a recipe for our club's cookbook.

Any recipe from our members is welcome, especially if you have ever prepared it for our Chocolate party, our Picnic, Seafood party, brought it on a ski trip or any other club event.

Desserts, main dishes, hors d'oeuvres, drinks,

Mt. High

More bike rides !



September 17 and October 8. Saturdays. Cost: Free.

We are planning at least two more bike rides this year. We have settled on the dates, but we are still debating



possible routes/destinations. One idea is to bike around Mosier and hit the Mosier Falls swimming hole. Or combine Carson Hot Springs with a bike ride. Any other ideas? Contact **John Davis**, hikedance@gmail.com and/or **Emilio Trampuz**, Emilio2000@earthlink.net.

Why Fusion Pass matters

You can save money with the Fusion Pass. We have two trips this winter, where you can use the Fusion Pass: on the "Powder Alliance" trip in February, and on the Leavenworth trip in March.

With the Fusion Pass, you get 6 days of free skiing on the Powder Alliance trip. And one free day on the Leavenworth trip.

On top of that, you get unlimited skiing at both Timberline and MT. Hood Skibowl, plus 3 free days at each of about a dozen other ski areas



Where to buy it

You can buy your Fusion Pass online, starting at: www.mthoodfusionpass.com, but you will still need to eventually have your picture taken and pick up your pass at any of the following locations, on specific dates (yet to be announced) in October and November:

Ski areas: Timberline and Skibowl

Ski shows/swaps:

- Mt. Hood Snow Sports Show (Ski Patrol)
- Ski Fever & Snowboard Show

Ski Shops: Evo, and Hillcrest Ski & Sports

Subaru dealerships: in Portland, Vancouver, Beaverton, Hillsboro, Gresham, Oregon City, and Salem.

Note that there is a purely **local version** of the Fusion Pass, valid only on Mt. Hood and not part of the Powder Alliance. If you buy a new Subaru car, you will receive this local version of the pass. It will not be valid on our trips to other ski areas.

Powder Alliance

Timberline, Skibowl and a dozen other ski areas are part of the Powder Alliance. If you have a season pass to any of these ski areas, you get unlimited skiing at your home area plus 3 free days at all of the other ski areas. The Mt. Hood Fusion Pass is one of the qualifying season passes.

Our "Powder Alliance" trip this winter combines two of the Powder Alliance ski areas, Whitewater, BC and Schweitzer Mt., ID, to give us a total of 6 free ski days.

Cost and Options

How much you will pay for the Fusion Pass depends mainly on your age:

1. **Adult, age 25-64:** \$499
2. **Young adult, 15-24:** \$349
3. **Junior, 7 - 14:** \$249
4. **Senior, 65-70:** \$249

5. **Exactly 70:** If you don't plan on skiing at Timberline and Skibowl more than 3 times each, but you want the Powder Alliance benefits, you can buy the Premium season pass at Stevens Pass for about \$129 or less. Stevens Pass is part of the Powder Alliance.

6. **Super-senior, 71+:** You can get the local pass for free, but it won't be valid outside of Mt. Hood. To get the full Powder Alliance privileges, the Fusion Pass will cost you \$50.

NOTE: All prices will go up after November 6 (after the Portland Ski Fever Show).

Hillcrest Sports 10% discount



Hillcrest Ski & Sports (our PACRAT bib sponsor) in Gresham, Oregon, will give NWSCC members a 10% discount by showing your card.

It's your Mt. High membership card, which also doubles as an NWSCC and FWSA membership card.

Hillcrest Sports is located on your way to Mt. Hood at: 2506 SE Burnside, Gresham, Oregon. 503-665-4455.

The Taco Shoppe 10% discount



Kevin Bastin, the owner of the Taco Shoppe in Government Camp and also a Mountain High member, has offered us a **10% discount off of any item on the menu!** Thanks Kevin!

So, stop at **The Taco Shoppe** in Govy, right next to the Mt. Hood Museum, and get ready to experience something delicious. And say thanks to Kevin!

Mt. High and Ski Kats

Mystery trip



1 central lodging, 2 ski areas

January 19 - 22, 2017. (Thursday - Sunday)

3 nights / 3 days skiing. -- Our first 3-day mystery trip!

2 days at: Mystery location 1.

1 day at: Mystery location 2

No need to pack and move every day. We'll stay in the same hotel all 3 nights. The hotel has a hot tub and indoor swimming pool. It also has free Wi-Fi and free breakfast (waffles, cereal, bread, muffins, fresh fruit, pastries, bagels, milk). All rooms have a hair-dryer, coffee-maker, microwave and refrigerator, and ultra-fast internet.

This will be a unique trip, shrouded in mystery. Let us take you some place fun for 3 days and nights! Experience something new.

Both ski areas have a wide variety of terrain. One of them is famous for the fact that everyone who has ever skied there loves it. Both lower intermediates and advanced powder skiers love it there.

The other ski area we'll visit is less well known and it will probably be a new find for most trip participants. Unfortunately, we'll have to leave that area early, in order to make it back home at a reasonable hour.

Mystery location 1 offers miles of Nordic trails, as well as cross-country equipment rental. Mystery location 2 does not have any Nordic trails.

Price: 1. With downhill lift tickets: **\$475** per person.
2. With no lift tickets = **\$370**

Nordic skiers, snowshoers, and non-skiers pay the lower price and buy their own passes, as needed.

Price includes all bus transportation, 3 nights lodging, and 3 lift tickets. Two lunches and one dinner are included. Depending on the number of people that sign up (the more the better), if we end up with any surplus, we will include another dinner.

Space is limited by the size of the bus. Also, this trip is open to members of other clubs as well, so please sign up early! See more details at: http://www.mthigh.org/Trips.htm#Mystery_trip

To reserve your spot: Please send in a deposit check of \$175 per person, preferably by November 15, 2016.

Full payment due by December 15, 2016. No refunds after December 15, unless you can fill your spot. See our Mt. High Trip Cancellation Policy

Please use the [Dough Transmittal form](#) on the Forms & Docs page on our web site, or on the next to last page in our newsletter. Make check payable to Mountain High Snowsport Club, and mail it to:

Mountain High
PO Box 2182
Portland, OR 97208

Contact trip leader: **Emilio Trampuz**,
503-378-0171, Emilio2000@earthlink.net



Mt. High and Ski Kats

Powder Alliance trip



Whitewater, BC + Schweitzer Mt., ID - both Downhill & Nordic skiing



February 25 - March 4, 2017 -- Saturday - Saturday.

* **Bus trip!** No wear and tear on your car!

* **Fresh powder!** Both mountains known for their powder.

* **Free skiing!** Ski 6 free days with Fusion Pass.

We'll spend 3 days skiing at Whitewater (British Columbia), and then an additional 3 days at Schweitzer Mt., Idaho. It will be an inexpensive trip, thanks to the **Powder Alliance** deal, which means that anyone with a **Fusion Pass** (to Timberline & Skibowl) gets to ski for free on all the 6 days.

Whitewater, BC is located about an hour north of the US/Canada border, and just 15 minutes from the charming town of Nelson, where we will be staying.

With an average annual snowfall of 40 feet, Whitewater has the reputation of being "one of the best powder mountain on the continent" (according to Powder Magazine). It has 2044 vertical feet, 1,200 acres, served by 3 lifts, each serving a different side of the 2 side-by-side mountains. There are also 15 km of groomed trails and 10 kilometers of snowshoe trails.

Schweitzer Mt., Idaho. offers 2,900 acres and 2,400 vertical feet, served by One high-speed six-pack; two high-speed quads; one triple chairlift; three double chairlifts; 1 T-Bar. It is famous for its powder skiing. This time we will stay in the nearby town of Sandpoint, at a Best Western hotel right next to Lake Pend Oreille, and within walking distance of downtown, where you will find lots of dining options.

Prices: 1. Adult full price = **\$1,133**

2. Senior full price (65 to 74) = **\$1,086**

3. Super-Senior full price (75-79) = **\$949**

4. Nordic full price (regular & senior) = **\$825**

5. Adults with Fusion Pass = **\$765**

6. Seniors with Fusion Pass = **\$765**

7. Base Price without any lift tickets = **\$765**

<== recommended

<== recommended

Free skiing is only for those 80 and over. 75 and over will have free skiing only at Whitewater.

Many seniors will do better with a senior Fusion pass but it depends on age. A **Fusion Pass** for seniors (which needs to be purchased before the trip) costs about \$250 for those 65-70, and about \$50 for those 71 and over.

To purchase a Fusion Pass, go to: www.mthoodfusionpass.com

Price includes all bus transportation, 7 nights lodging, and 6 lift tickets. Two lunches (on the way up and on the return trip) are included. Depending on the number of people that sign up (the more the better) and the rate of exchange with the Canadian dollar, if we end up with any surplus, we might include some breakfasts and/or dinners too.

Space is limited to 48 people. This trip will be open to members of other clubs, so please sign up early!

To reserve your spot: Please send in a deposit check of \$250 per person by September 15, 2016. Note that last year's Canada trip sold out by the time our annual Kickoff Party.

Full payment due by January 1, 2017. No refunds after January 1 unless you can fill your spot. See our Mt. High Trip Cancellation Policy

Print our [Dough Transmittal Form](#) and mail it in with your \$250 deposit check payable to Mountain High club, PO Box 2182, Portland, OR 97208.

Please indicate on the form which of the options you are signing up for. We need to know if you are a Senior (over 65) and if you intend to purchase the Fusion Pass (with the Powder Alliance deal).

More trip details at: [http://www.mthigh.org/Trips.htm#Powder Alliance trip](http://www.mthigh.org/Trips.htm#Powder%20Alliance%20trip)

Contact trip leader: Karen Michels, skiklynn@gmail.com, 503-984-9210

Mt. High

Leavenworth trip

**Mission Ridge + Stevens Pass****March 17-19, 2017 - 2 days/ 2 nights.**

Maximum 50 people on the bus; inquire about driving options if bus is full, if you want to bring your family, or if you are coming from another city. The bus trips are usually our club's best and most fun events. We will leave Friday at 3 pm, and return Sunday night by 9:00 -9:30 pm. We'll visit:

1. **Mission Ridge**. 2,250' vertical. 1 Express Quad, 3 Doubles. You can ski by a World War II bomber that crashed on the mountain. Get a 15% dining discount by showing your group lift ticket.

2. **Stevens Pass**, lots of tree skiing, front and back + lots of cruisers! 1,800' vertical on 3 sides of 2 different mountains, served by 3 Quads, 4 Triples, 3 Doubles. Note that if you buy a [Fusion Pass](#) this year, you will be able to use that pass for free skiing at Stevens Pass and your trip price will be reduced by \$37 (our very special group rate).

Lodging: We'll stay in the charming town of Leavenworth. We have booked almost the entire Obertal Inn, right in the middle of Leavenworth, just for us! A very nice "expanded continental breakfast" is included for everyone. The Obertal has expanded their breakfast room and their already excellent menu, now including an egg dish every day. Most rooms have 2 queen beds, though there are a few king rooms available. Full disclosure: the Obertal has 3 stories with no elevator. In addition, we have booked three 2 bedroom/2-1/2 bath fully equipped townhomes directly across the street.

The townhomes have one king master suite, one queen bedroom with bath in the hall, and a sleeper sofa downstairs with a half bath (that person has to shower upstairs). We can put 5 people in a townhome with one person on a sleeper at no additional pp cost (\$20 price reduction for the person sleeping on the sofa bed); for more privacy, if you want 4 in a townhome add \$30 pp for 4 people.

All people staying in townhomes have to agree to stay together; we will not assign people who don't know each other into that setting. There is an additional 3 bedroom/2 bath townhome a block away.

Breakfasts will not be included for the people staying there.

Two dinners included! The club will provide a Bavarian Banquet Dinner at the Andreas Keller Restaurant in Leavenworth on Saturday night (drinks, appetizers, and alcoholic beverages on your own).

You will also get a buffet dinner at Old Country Buffet in Bellevue on the bus trip back home on Sunday night.

Price: (per pers.) includes: bus, 2 nights lodging, 2 dinners, depends on your age and if you have a Fusion Pass.

Standard Adult, PP/DO with 2 lift tickets \$360

Standard Adult, PP/DO with Fusion Pass (Stevens Pass free) \$323

Super Senior, 70+, PP/DO with 2 lift tickets \$310

Super Senior, 70+, PP/DO with Fusion Pass (Stevens Pass free) \$295

Non-skier on the bus, including meals \$280

Four people in a townhome instead of five (all 4 must agree) add \$30 pp.

If you are interested in driving over (i.e. if the bus is full, you want to bring your family, or you are coming from another city) contact Linda McGavin for special pricing

To reserve your spot: Please send in a deposit check of \$150 per person.

Full payment due by February 20, 2017. No refunds after February 20, unless you can fill your spot. See our Mt. High Trip Cancellation Policy

Please use the [Dough Transmittal form](#) on the Forms & Docs page on our web site, or on the next to last page in our newsletter. Make check payable to Mountain High Snowsport Club, and mail it to: Mountain High, PO Box 2182, Portland, OR 97208

Contact: trip leader **Linda McGavin** (trip leader) at 503-652-2840, Trips@mthigh.org or **Emilio Trampuz** (co-captain), 503-378-0171, Emilio2000@earthlink.net

More ski trips info at: www.mthigh.org/Trips.htm.



January 28 – February 4, 2017 Annual ski week organized by the Far West Ski Association.

Breckenridge or “Breck” (as Summit County locals call it) is a destination ski resort with the perfect blend of everything you could want on a ski vacation: world-class skiing for all levels, a fun nightlife scene, great restaurants, and a historic downtown. Breckenridge is a former mining town with Victorian architecture. It will be the combination of the exhilarating on-mountain skiing, the historic town activities and the organized group experiences that will make this an exciting and memorable trip.

Breck has five interconnected peaks, which offer an amazing variety of skiing for all skill levels. Peak 10 offers steep runs and challenging moguls. Peak 9 is best for beginners. Situated in the heart of the resort, Peak 8 is packed with trails for all levels. The upper part of Peak 8 is composed of advanced and expert terrain, and is served by the highest lift in North America. Intermediate skiers will feel at home on Peak 7's blue runs. Peak 6 is also geared primarily to intermediate skiers, but also includes a large amount of advanced terrain and chutes.

We will be staying at the Mountain Thunder Lodge, an elegant stone-and-timber condominium lodge situated in a beautiful wooded area along a ski run. The lodging is ski-in, with only a short walk to the base gondola in town that goes to Peaks 7 & 8. See pictures of the lodging at: <http://www.breckresorts.com/lodging/mountain-thunder-lodge/overview.aspx?cmpid=PPC303950342>

Lodging and Amenities Package per person, double occupancy = **\$1025.**** This price does not include discount lift tickets or transportation. What is included is:

- 7 nights lodging (double occupancy per bedroom)
- Portage for luggage
- Registration
- Welcome Party
- Pub Crawl
- Northwest Ski Club Council Night Dinner
- Mountain Picnic
- Après Ski Party
- Activity Fee - Racing and Scavenger Hunt
- Banquet with Dancing



**** For private bedroom add single supplement: \$675.**

Anyone who chooses to purchase an Epic Pass (various Epic Passes are available) through Sports America Tours will receive a \$50 discount on the Basic Package price. Here's the link to view the pass options: <https://www.sportsamerica.com/epic-fwsa> Please contact the trip leader if you are interested in this option.

For most of us, significantly discounted group lift tickets are the best option for this trip and cost as follows:

5 of 6 day adult \$375, with the option of a 6th day for an additional \$35.

5 of 6 day senior (65 and over) \$332, with the option of a 6th day for an additional \$25.

Your multiple day lift ticket is good at all Vail Resorts (Breck, Keystone, Vail, and Beaver Creek) and at Arapahoe Basin. There is free Summit County bus service to Keystone and Arapahoe Basin. Up to 2 days of the 5 day lift ticket may be used at Vail or Beaver Creek during the week. We are planning an optional mid-week chartered bus trip to Vail.

See details in the trip flyer. <http://www.mthigh.org/Trips/2017-FWSA-Ski-Week-Breckenridge-Flyer-01.pdf>

Questions? Contact **Rod Robinson** at rdrobinson@aol.com or 541-344-7170.

To sign up: Send a \$100, deposit. Make your checks payable to: **Northwest Ski Club Council**. Mail should be addressed to:
NWSCC | Breckenridge Trip,
Rod Robinson, 5230 Overbrook Ln., Eugene, OR 97405

More ski trips info at: www.mthigh.org/Trips.htm.

MOUNTAIN HIGH

Contacts / Club info

SNOWSPORT CLUB

Man & Woman of the Year



Karen Michels, our Membership director, has led a number of bike rides last summer and organized one of our best ski trips to Canada so far.



Steve Royce, our Secretary, has attended all Board meetings, kept accurate meeting Minutes, and participated in the club's decision making.

Mountain High Meeting

Usually last Monday.

August 29 (Mon.): Open to all who want to get involved with the club. Gather at **6 pm**. Start at **6:30 pm**.

Location: Round Table Pizza, 10070 SW Barbur Blvd. (near Capitol Hwy.)

Mountain High snowsport club contacts:

President: Debbi Kor H: 503-314-7078,
Vice-President: Bill King H: 614-371-4762
Secretary: Steve Royce H: 503-413-0493,
Treasurer: Nancy Pratt H: 503-593-9427,
Past President: Kurt Krueger H: 503-625-1492,
Membership Director: Karen Michels H: 503-984-9210,
Racing Director: Alan Bean H: 503-849-8009,
Newsletter Editor: Emilio Trampuz H: 1-503-378-0171,
Social Activities: Debbi Kor H: 503-314-7078,
Trips Director: Linda McGavin H: 503-652-2840,
Golf: Cal Eddy H: 503-805-8606,
Hiking: Chris Brooks H: 503-764-5323,
Bike rides: Jackie Bonillo H: 503-663-3359,
Mid-week skiing: Ken Brundidge H: 503-720-0620,

President@mthigh.org
willie2k@ymail.com
wsroyce49@frontier.com
Treasurer@mthigh.org
PastPresident@mthigh.org
skiklynn@gmail.com
Racing@mthigh.org
newsletter@mthigh.org
ijustwannarun1@comcast.net
Trips@mthigh.org
baebaw@ccgmail.net
jruffman@aol.com
jbon1960@comcast.net
KenBrundidge@comcast.net

General info:
info@mthigh.org

Web site:
www.mthigh.org

DOUGH TRANSMITTAL FORM

Mail check payable to: Mountain High Snowsport Club, PO Box 2182, Portland, OR 97208.

PLEASE PRINT CLEARLY: ☐ New membership or ☐ Renewal

Name(s): _____ Birthday (MM/DD) _____

Address: _____

Phone (Hm): _____ Phone (Wk): _____

Email (Hm): _____ Email (Wk): _____

I certify that I am 21 years of age or more. I acknowledge that I am responsible for my own safety and conduct. I hereby agree to be bound by all Mountain High Snowsport Club bylaws and regulations, including the Trip Cancellation Policy. I hereby release Mountain High Snowsport Club, and any of their agents (officers, directors, trip captains, and any other Club representatives) from liability for personal injury, property damage, or any other liability of any kind connected with my participation in any club-related activity. Furthermore, I agree to indemnify and hold the Club and any of their agents harmless from any and all liabilities of any kind which may be incurred or asserted against the Club or any of their agents in any way relating to my negligence or willful misconduct connected with my participation in the club's activities.

Email Preferences: - Newsletter (once a month): ☐ yes, link only ☐ yes, complete file ☐ no
☐ No changes - Club news & events (between newsletters): ☐ yes ☐ no
 (same as last year) - Other ski news (NWSCC, FWSA, ski areas, trips...): ☐ yes ☐ no
 - Is it OK to share your email address with other club members? ☐ Yes ☐ No

Please take my money, and apply it toward the following Ski Club fun stuff:

	Deposit?	Paid in full?
<input type="checkbox"/> Annual Membership (Oct. 1, 2016 - Sept. 2017): Single (\$25); couple (\$40)	\$ _____	_____
<input type="checkbox"/> PACRAT Racing (2017) \$99 for the whole season. Team: _____	\$ _____	_____
<input type="checkbox"/> Rafting weekend (Aug. 11-14). Members=\$75. Non-members=\$90. No rafting=\$25	\$ _____	_____
<input type="checkbox"/> Rafting optional add-ons. RV space=\$25 per day.	\$ _____	_____
<input type="checkbox"/> Mystery trip (Jan. 19-22, 2017). Deposit = \$175. Total cost = \$475.	\$ _____	_____
<input type="checkbox"/> Powder Alliance trip (Feb. 25 - March 4, 2017) Deposit = \$250.	\$ _____	_____
Trip options: Age bracket (_____). Will you have a Fusion Pass? [Y / N]		
<input type="checkbox"/> Leavenworth trip (March 17-19, 2017). Deposit = \$150. Total = \$360 or \$323.	\$ _____	_____
<input type="checkbox"/> Other: _____	\$ _____	_____

Comments (For whom you are paying. Roommate requests,...): _____

Signature(s): _____ Date: _____

Signature(s): _____ Date: _____

See our Trips cancellation policy on our web site: <http://www.mthigh.org/Documents/Trip-Cancellation-Policy.pdf>

Checkmark all desired options.

Club membership = 245 Newsletter Distribution

The August issue is posted on our web site. Also:
 277 copies sent via email (as PDF files)
 15 paper printed copies sent via US Mail.
 Copies are also sent to potential members, other clubs,
 the National Ski Club Newsletter, etc.

Count Your Ski Areas

Set up your own counter of ski areas visited. Use a modified form of John and Jewel's spreadsheet with 3 added columns, for up to 3 more people. Make one of these your own. Enter a "1" for every ski area visited. See: <http://www.mthigh.org/Documents/North-American-Ski-Areas-2014-5-25.xls>

FWSA**Diving Trip to Fiji****Sept. 24 - Oct. 8, 2016**

Beqa Lagoon Resort: September 24 – October 1, 2016
 Diver Package: \$1,916. Non-Diver Package: \$1,383.
 Single Supp. Add - \$308.

Paradise Taveuni Resort: October 1 – 8, 2016
 Diver Package: \$2,171. Non-Diver Package: \$1,220.
 Single Supp. Add - \$747.

You can do Beqa (week 1), Paradise (week 2) or both.

Each week, the price includes:

- 7 nights – based on 2 per room. All meals daily
- Use of paddle boards, kayaks & catamarans
- 5 days (12 boat dives at Beqa, 16 at Paradise)

Contact: Randy Lew, FWSA Dive Trip Leader, 7007
 SW Iron Horse St., Wilsonville, OR 97070.

Cell: 530/304-0802 e-mail: FWSA13Randy@telis.org

Info: <http://www.fwsa.org/Travel/Dive/2016-FWSA-Fiji/Fiji-Index.html>

NWSCC Ski & Ride Challenge

The NW Ski Club Council wants to encourage you to ski more places. If you have skied or ridden any 7 or more Northwest resorts during the 2015-2016 ski season, you are eligible to win a prize. Just mail your lift tickets and/or receipts to the NWSCC. **Do it now!** Winners will be announced in December.

Ski areas that count are all those in **Oregon, Washington, Hawaii**, as well as our commercial member resorts in **British Columbia** (Big White, Sun Peaks, Whitewater, Kicking Horse, Fernie, Kimberley and Nakiska), one in **Colorado** (Aspen/Snowmass), 3 in **Idaho** (Brundage, Schweitzer, and Sun Valley), 1 in **Montana** (Whitefish Mt.) and 2 in **Wyoming** (Grand Targhee, Jackson Hole).

Mail your lift tickets or receipts to the Northwest Ski Club Council, Ski Challenge, 5331 SW Macadam Avenue, Suite 258, Box 438, Portland, OR 97239.



for updates.

www.mthigh.org

Please check our web site,

Salem, OR 97302

4742 Liberty Rd. S., #296

Mountain High Newsletter editor

Emilio Trampuz

