



Lift Lines

= No. 180, December 2015 =

Mountain High Snowsport Club, PO Box 2182, Portland, OR 97208



Hello Winter!

The winter storms are bringing us lots of snow. It looks like a very strong El Niño is not nearly as bad as a weak El Niño. It's the weak El Niño that brings us dry and warmer weather. But we are now in the midst of a very strong one.

Winter trips. The Canada trip is full, but there is a waiting list. There is still room for 2 or 3 people on the Montana trip. The Crystal Mt. trip is approximately half full. See pages 9 - 12.

Recreational Racing. Our racing teams are almost complete. If you are new, we'll do our best to fit you in. Contact any of our team captains or our Racing Director, Bruce Kuper, bruku@comcast.net. See page 5.

Snow is Here!



Karen Michels at Timberline, Sunday, December 6, 2015.

We have already announced an invitation for you to join us on Mt. Hood on Sunday, December 13. We'll meet in Sandy at 7:45 - 8:00 am. Some of us are definitely going to Timberline. We haven't heard from people with the Meadows pass. Other dates will be announced.

Let us know whenever you go skiing, if you want some company. Put the word out through our **Forum**. So far, only about 65 members are part of the Forum. Don't be left out. To be in the loop, simply go to our web site, click on the All-club Forum (or the Mid-week Forum) and then click on "Join this group" in the upper right corner.

In This Issue

1. **Christmas Ships Parade Social.** Come join us on Tuesday, Dec. 15.
2. **Winerhawks game.** Group discount plus a free lift ticket to Mt. Hood Meadows. Jan. 2. See page 4.
3. **NASTAR Open.** This is a just for fun, one day only, recreational race. If you've ever wondered what it's like to run a race course, come try it Sunday, Jan. 3. Just show up early at Skibowl. See page 5.

Note the color code.
Our club is blue.

2015/2016 CALENDAR

Blue: Mountain High events
Red: NWSCC / FWSA / Multi-club
Black: General events

DECEMBER

Dec. 5 (Sat.): Cascade Lodge Open House
Dec. 4 & 5: Sandy Ski Swap + Warren Miller film
Dec. 15 (Tue): Christmas Ships Parade Social
Dec. 16 (Wed): NWSCC meet & PACRAT bibs
Dec. 28 (Mon.): Mt. High Board meeting

JANUARY 2016

Jan. 2 (Sat.): Winterhawks game
Jan. 3 (Sun.): NASTAR Open Race - Skibowl
Jan. 10 (Sun.): PACRTAT Race 1 - Skibowl
Jan. 24 (Sun.): PACRTAT Race 2 - Meadows
Jan. 24-30: Canada trip - Silver Star, Sun Peaks

FEBRUARY 2016

Feb. 13 (Sat.): Cascade Lode - Crab Feed
Feb. 13 (Sat.): Chocolate Party
Feb. 21 (Sun.): PACRTAT Race 3 - Skibowl
Feb. 21-27: Montana trip Discovery, Lost Trail
Feb. 28 (Sun.): PACRTAT Race 4 - Meadows

March 2016

Mar. 5-6 (Sat-Sun): Masters Race - Skibowl
Mar. 13 (Sun.): NASTAR Open Race - Skibowl
Mar. 18-20: Crystal Mt. trip
Mar. 24 (Sun): PACRTAT Race 5 - Timberline

MOUNTAIN HIGH**Past events****SNOWSPORT CLUB****NWSCC Ski Fair**

November 9, 2015 (Monday).

The annual Ski Fair, usually held the day after the Portland Ski Fever & Snowboard Show closes, brought together local ski clubs and local ski areas.

The booth decorating theme was "Let It Snow", and our Mountain High booth won the title of best decorated booth. We heard that the judging was close, but what tipped the scales in our favor were the cookies and hot apple cider we were serving to everyone who visited our booth.

Our booth was decorated by Karen Michels, Emilio Trampuz and Kurt Krueger.

A little later, Debbi Kor brought her home-made cookies, and Edie Martinelli brought the hot apple cider.

A little later, Debbie Thomas (a.k.a. "Black Diamond Debbie") also helped to staff the booth.



Mountain High booth: Karen Michels, Emilio Trampuz, and Kurt Krueger.



Mary Olhausen - chief
Ski Fair organizer



Linda McGavin - in
charge of Silent Auction



Sylvia Kearns
NWSCC President

Kickoff Party

November 12, 2015 (Thursday).

Our annual season Kickoff party was held, as usual, at Gray Gables Estate in Milwaukie. This year, only about 75 people showed up, which is fewer than normal. Still, it was a great event.

People renewed their membership, signed up for trips and for PACRAT racing. There were door prizes, free food, and good company.

Bruce Kuper showed a video about PACRAT racing and Emilio showed one about our club in general.



Debbi Kor & Sylvia Kearns award a door prize to Sammy Fouts.



Andy Hobart and Bruce Kuper



Debbi Kor



Karen Michels and Nancy Erz at registration desk

See many more photos at www.mthigh.org/Photos.htm.

What's new with YOUR ski club?



Mountain High Board of Directors met on Monday, November 30th. We found out that:

- The **Canada** trip has 38 people going on it
- The **Montana** trip has about 25 people signed up, and room for just a few more.
- The **Crystal Mt.** trip is moving along nicely, and still has room for more.

We discussed locations for future trips.....whether it's a weekend trip, a 3-4 day trip, a car-pool trip, a day trip someplace.....let us know your thoughts.

We are also thinking about choosing a particular Saturday or Sunday and declaring it **Mountain High Ski Day** at Timberline or Meadows sometime this winter. Maybe a couple days like that.

We will be doing the **Christmas Ships** again this year at **Joe's Crab Shack**, on the Columbia River. We are thinking about Tuesday, December 15th, at 6:30. Come join us for dinner and drinks in the bar. Joe's Crab Shack, Tuesday, December 15th, at 6:30.

I am still looking for recipes, recipes, recipes for the **Mt. High Cookbook**. Desserts, main dishes, hors d'oeuvres, drinks, whatever you'd like to send me. Send your favorites, your grandmother's favorites, your neighbor's favorite dishes. Mountain High boasts a LOT of excellent cooks. Let's pull our stuff together and see what we can come up with!

I am seeking **hosts/hostesses** for the **Chocolate Party** in February. Valentine's Day is on Sunday, so we're looking at having the party on Saturday, February 13th. If you would be interesting in hosting the party at your home....and have the space to do it....please let me know.

I am also looking for some new ideas for **house parties**. If you have something fun, exciting and new, let me know. While we love our Chocolate Party, our Seafood Party, etc. it would be nice to have something new to add.

See more detailed info on our upcoming events on our web site at www.mthigh.org.

Debbi.

Mt. High display at Mt. Hood Museum

Our display cabinet was updated by **Debbi Kor** in November 2015. Also, **Bruce Kuper** fixed some of the shelves and the electric wiring and lighting. Here is our display case on the right, and the Skiyente Ski Club's case on the left. (Photographer: Bruce Kuper)



Mt. High Cookbook



We are putting together a Mountain High cookbook!

Please contribute a recipe. Any recipe from our club members is welcome.

Even more welcome if it has some connection to the club, such as if you have ever prepared it for our Chocolate party,

our Picnic, Seafood party, brought it on a ski trip bus, or any other club event.

Desserts, main dishes, hors d'oeuvres, drinks, whatever!

Please send your contributions to
Debbi Kor,
ijustwannarun1@comcast.net

MOUNTAIN HIGH

Upcoming events

SNOWSPORT CLUB

Sandy Ski Swap + Warren Miller movie

Dec. 4 and 5. (Friday and Saturday)

Ski and Snowsports Swap & Sale. New and used ski and snowsports equipment with great prices! Then, see the latest **WARREN MILLER movie** Show times: 6pm December 6th & 7th. Tickets \$20 (a limited number available at the door). **Location:** New Sandy High School Auditorium

Winterhawks Hockey game and Mt. Hood Meadows lift ticket

Jan. 2 (Saturday) Come see a Winterhawks game and get a free Mt. Hood Meadows lift ticket good for Sunday, **March 6** and Sunday, **March 13**.

To reserve your seat, please mail a check for **\$21** made out to **David Myers** and mail it to: David Myers, Mt. High Snowsports Club, 1500 NW Bethany Blvd. Suite 235, Beaverton, OR 97006. Contact: Dave Myers, davem@everestinc.com or 503-701-6832.



=



Mt. High Christmas Ships Parade



December 15, 2015
(Tuesday) - 6:00 pm

We'll gather at **Joe's Crab Shack**, on the Columbia River (just across the Interstate Bridge, on the Vancouver side) to watch the Christmas Ships.

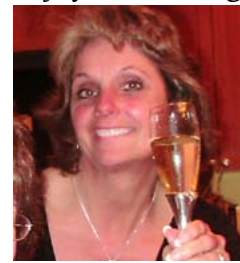
Location:

Joe's Crab Shack,
101 Columbia Way
Vancouver WA
Ph.: 360-693-9211.



We'll have some tables staked out, beginning around 6:00 p.m. The ships are due to arrive around 7:45, so come for drinks, stay for dinner and enjoy the evening with your fellow Mt. Highers.

Contact: **Debbi Kor**,
503-314-7078,
ijustwannarun1@comcast.net



NWSCC

NWSCC Meeting + PACRAT Bib Pickup

PACRAT



By being a Mt. High member, you are also automatically a member of the NWSCC.

The NW Ski Club Council holds meetings on the 3rd Wednesday approximately every other month. These meetings are open to everyone. The next meeting will be a combined NWSCC and PACRAT meeting.

December 16 (Wed.) 6 pm.

At Buffalo Gap Saloon, 6835 SW Macadam Ave., Portland, OR 97219



Topics include:

1. Guest speaker: Dave Tragethon, Mt. Hood Meadows.
2. PACRAT racing bib pickup - Team captains be there!
3. PIE Auction -- Yes, real pies and cookies, and other desserts,
4. Safety issues,
5. Ski Challenge winners, ... and more!

For more information, see the NWSCC web site at: <http://www.nwskiers.org/>

See the monthly NWSCC Newsletter at: www.nwskiers.org/Newsletter/Newsletter.htm

PACRAT News

Pacific NW Area Clubs Recreational Alpine Teams

There is still time to join a PACRAT team for the upcoming 2015-2016 season. As long as there are still any spots open on any of the teams, we will fit you in.

Recreational racing is fun, and it is also quite social. By joining a 10-person team you automatically get 9 other ski buddies for the season. There are 5 official PACRAT races, but you can also participate in the two optional NASTAR races. After each PACRAT race, there is usually a party with free food and drinks.

A \$99 racing fee covers all 5 races and parties.

If you want to join us, just contact our Racing Director, **Bruce Kuper**, at bruku@comcast.net.

Here are the race dates for 2015/16.

Jan. 3 (Sun): NASTAR Open race - Skibowl

Jan. 10 (Sun): PACRAT race 1 - Skibowl

Jan. 24 (Sun): PACRAT race 2 - Meadows

Feb. 21 (Sun): PACRAT race 3 - Skibowl

Feb. 28 (Sun): PACRAT race 4 - Meadows

Mar. 5-6(Sat-Sun): Masters races - Skibowl

Mar. 13(Sun): NASTAR Open race - Skibowl

Mar. 20 (Sun): PACRAT race 5 - Timberline

Apr. 3 (Sun): PACRAT Make-up race (only if needed)

Apr. 15 (Fri.): Rat Attack awards dinner party - at McMenamins Edgefield.

Mt. High racing page: <http://www.mthigh.org/Racing.htm>

PACRAT web site at: <http://www.pacrats.org/index.htm>

PACRAT Facebook page: <https://www.facebook.com/groups/PACRATRacing/>

Mt. High Team captains

Team name	Team captain	Email address
Avalanche Express	Gary Gunderson	ktgpdx@frontier.com
Awesome tAles	Alan Bean	abean@nwgeotech.com
Blizzardos	Linda Eidemiller	2lindaloo@gmail.com
Chilled Brewskis	Brenda Becerra	LetsPlayOnTheMt@hotmail.com
Frosted Flakes	Stevie Viaene	stevie.viaene@gmail.com
Infra-Rats	Garth Eliason	gweliason@gmail.com
Lab Rats	Lonny Schiller	landkschiller@gmail.com
Mixed Nuts	Samy Fouts	samyfouts@comcast.net
Moose on the Loose	Scott Stepan	s_stepan@hotmail.com
Mt. Hoodlums	Phil Mant	phil6666@aol.com
Rattitudes	Chris Wiley	Chris2007@Yhuji.com
Schussing Shysters	McCoy Smith	McCoySmith@comcast.net
Vertigo Madness	Tom Cansler	tomcansler@qualitytank.com

Anyone who isn't already on a team but would like to try running some gates, please contact our Race Director, Bruce Kuper, at bruku@comcast.net, or contact any of our team captains listed above.



David Papworth on the "Schussing Shysters" team

PACRAT Bib Pickup



Dec. 16 (Wednesday) 6pm

All team captains should come and pick up the racing bibs for their teams on Wednesday, December 17, at the **Buffalo Gap Saloon**, 6835 SW Macadam Ave.

If the team captain can't come, please send one of the other members of your team to pick up the bibs.

Note that this will be a mixed PACRAT/NWSCC meeting and there will be other things on the agenda. See the previous page.

NASTAR Open Race



Jan. 3 (Sunday) - Mt. Hood Skibowl

This race is open to all, not just PACRAT racers. It's an opportunity to run some gates and see how it feels.

Details haven't been announced yet, but it usually costs about \$10 for 2 runs. Keep checking the Mt. High Race Events page and the PACRAT web site for details.

Let's ski together!

Let's connect and ski together. Use the following tools.

- Forums.** These are actually Google Groups incorporated into our web site. Just go to www.mthigh.org and click on either the All-club Forum or the Mid-Week Forum. Click on "Join this group" and participate in the chat.
- Emails.** Watch for announcements for days when at least some of us plan to go skiing / riding. Organize an outing yourself and announce it by emailing the club at info@mthigh.org. We'll pass the word on.
- Meet us in Sandy** on the days we pre-announce. If you miss us there, try to connect with us on the slopes by tuning your **2-way radio** to channel **6-19**.



Facebook Page



Our club's **Facebook** page is another way for our members to communicate with each other, in addition to emails, our web site, Bulletin Board, and our two Forums.

Check out the Facebook page at: <https://www.facebook.com/groups/1528330064067232/>

Join this Facebook group and post your thoughts and photos there!

Unfortunately, not everyone is on Facebook, and even if they "friend" our club, they won't always receive news of every update. Our Forums are quicker ways to connect with others for a day on the slopes.



Mt. High Forum

You can use our club's Forum in various ways:

- To make announcements;
- To ask questions;
- To find buddies to ski with;
- To discuss gear & other issues.
- You can now post a photo too!

Join in the fun. Check it out by going to www.mthigh.org, and clicking on the **Forum** button. Or, just click on the word **Forum** here.

If you are new to the Forum, you can view all the messages, but if you want to post your own, please click on "**Join this Group**" in the upper right of the Forum page.

Note that we have a separate forum for mid-week skiers.

TRIPS web page

Yes, a **day trip** to Mt. Hood is also a trip, so check out the **TRIPS** page on our web site, and look for announcements about either mid-week or weekend trips to Mt. Hood. Then join us on the slopes on the pre-announced days.



Mid-week skiers

Q How can I join the mid-week skiers?

A These are regular club members, just like you and me, who like to ski during the less crowded weekdays, especially when there is fresh powder on the slopes.

The group was started by **Harry & Lisa Scribner**. Then **George Yun** took it over, and right now the man in charge is **Ken Brundige**, KenBrundige@comcast.net



Ken Brundige
Mid-week skiing
coordinator

Email him your questions, but it's best to join the **Mid-week Forum** and you will then receive email updates every time someone posts something there.

\$10 Rotary Day at Mt. Hood Meadows

Jan. 18, 2015. (Monday) 2 pm - 9 pm.

At this fundraiser organized by the Hood River Rotary Club, Mt. Hood Meadows lift tickets will be just \$10, or \$15 if purchased from the Mt. Hood Meadows ticket sales window.

This is Martin Luther King Day, a holiday.

On the day of the event, the Rotary tickets should be purchased from Rotarians who stand at the top of the breezeway stairs by the Coffee/deli. Also there is another Rotarian posted at the ramp corner across from the entrance to the ski clothing shop.

Bring a Friend / Learn to Ski Month



January is "Learn to Ski" months. Ski areas are supporting this by offering a challenge with rewards.

Introduce someone to skiing or snowboarding to sign up for the Bring a Friend Challenge!

When your novice friend signs up for lessons from a professional ski instructor, you'll be entered to win prizes, swag and trips by the Bring a Friend sponsors when you register online at:

<http://www.bringafriend.org/>

Silver Star



Canada trip

Silver Star / Sun Peaks

January 24 - 30, 2016.

(5 ski days / 6 nights)

Silver Star has a mellow front side and a couple of really long cruisers on the back side, but it is famous for its steep and challenging powder runs on the back

side. Tree skiing. Powder. Best of all, a ski-in/ski-out village located not at the bottom but in the middle of the mountain. The village has a wild-west town look but in pastel colors! It is the locals' favorite mountain. And it is part of the Powder Alliance, which means that anyone with a Fusion Pass can ski there all 3 days for free!

Silver star has 128 named trails on 2,500' vertical, served by 12 lifts, 3 of which are hi-speed quads. Try to ski all the 5 distinct areas: the Front side (Vance Creek), the Back side (Putnam Creek), Silver Woods, Attridge, and Alder Point (advanced hike-to area). Silver Star also has 106 km of cross-country trails.

Sun Peaks is just 2.5 hours away, and we'll move there for the last 3 nights. Sun Peaks has a European village themed ski-in/ski-out village, with a pedestrian street lined with boutique stores and cafes. There are 3 separate peaks to ski: Mt. Tod, Sundance, and Mt. Morrissey. Lots of hidden nooks and crannies. Don't miss the "Sticks" and the "Back in Time" trail on Mt. Morrissey. Also, you have to try some of the steep trails on Mt. Morrissey with washing machine names, such as "Agitator", "Static Cling", "Spin Cycle", etc.

Sun Peaks is the 2nd largest ski area in Canada. It has 133 named trails (one of them 5 miles long), 2,894' vertical, served by 11 lifts, 3 of which are high speed quads.

This will be a bus trip. We'll pick up in Portland and in Vancouver, WA. We'll spend 3 days at Silver Star, and then an additional 2 days/3 nights at Sun Peaks.

Prices: Adult full price = \$1,095 Senior full price = \$1,033
Adults with Fusion Pass = \$888 Senior w. Fusion Pass = \$849

Price includes all bus transportation, lodging, and lift tickets. Two lunches (on the way up and on the return trip) are included. Depending on the number of people that sign up (the more the better) and the rate of exchange with the Canadian dollar, if we end up with any surplus, we will include some breakfasts and/or dinners too.

Space was limited to 32 people. We managed to squeeze in 38. **This trip is now FULL**, as of the end of October 2015. If you want to be on the **waiting list**, in case someone cancels, please contact **Karen Michels**.

Full payment due by November 15, 2015. No refunds after November 15 unless you can fill your spot. See our Mt. High Trip Cancellation Policy on our TRIPS web page.

Print our **Dough Transmittal Form** and mail it in with your \$250 deposit check payable to Mountain High, PO Box 2182, Portland, OR 97208. If you are sending just a deposit, please indicate on the form which of the 4 categories you are in. Are you a Senior (65+) and do you intend to purchase the Fusion Pass (with the Powder Alliance deal).

Trip leaders:

Karen Michels, skiklynn@gmail.com, 503-984-9210
Emilio Trampuz, Emilio2000@earthlink.net, 503-378-0171.

More ski trips info at: www.mthigh.org/Trips.htm.

Sun Peaks



Silver Star





Discovery Mt.

Montana trip

Discovery Mt. / Lost Trail

February 21 - 27, 2016.
(5 ski days / 6 nights)

Something unique! Kurt Krueger and Emilio Trampuz did some scouting in February 2015 and discovered a couple of hidden gems in southwest Montana. We want to take you there.



Lost Trail Powder Mt.

Discovery ski area. This was quite a find! Last winter was a bad snow year in the West, but the day we arrived we got 4 inches of wonderful fresh powder here on top of a very good base. You want challenge? You'll find it here. Over a dozen double-black never groomed named runs in the back bowls! This is like skiing in the Chugach mountains, but without the need for a helicopter! Even the blue cruisers seem very long, with a consistent pitch.

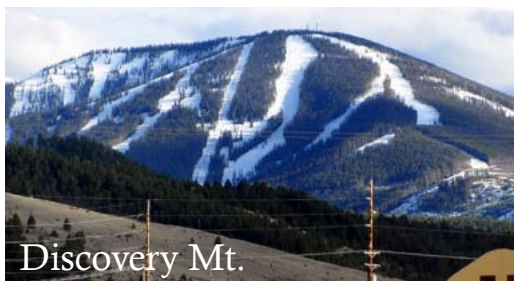
Discovery offers 2,400 vertical feet, 2,200 acres, served by 5 triples and 2 double chairs. Beginners and lower intermediates have their own hill. The best feature is: no crowds!

Lost Trail Powder Mountain. A great place, lots of powder, and no crowds. This place is open only Thursdays thru Sundays. Any snow that falls in the first half of the week will be untouched on Thursday. We will time our trip to arrive there on Thursday!

Lost Trail is located on the border between Montana and Idaho, and you can ski both sides. Yes, just like Look-out Pass, only bigger! It offers 1,800 vertical feet, served by 5 double chairlifts. The Montana side has several double-black runs. Best feature: No crowds, and an enormous field of perfectly spaced thin trees, where you can leave an unlimited number of fresh tracks while doing slalom laps through the trees.

Both Discovery Mt. and Lost Trail were featured in the 2014 Warren Miller ski film: "No Turning Back".

This will be a bus trip. We'll pick up in Portland and Troutdale. 2 days/2 nights in Philipsburg (Discovery ski area), and 2 days/3 nights in Hamilton (near the Lost Trail ski area). Bonus: we'll also hit the Montana Snow-bowl, near Missoula, one day. This will be a very unique trip. Experience the pristine side of Montana!



Discovery Mt.

Price = \$825 per person.

Montana ski areas don't offer a senior discount. But we got a good deal on group tickets.

Price includes all bus transportation, lodging, and lift tickets. Two lunches (on the way up and on the return trip) are included. Also, a dinner in Philipsburg. Depending on the number of people that sign up (the more the better), if we end up with any surplus, we will include another dinner.

Space is limited to 32 people. We cannot include more because of lodging limitations. Also, this trip is open to members of other NWSCC clubs as well. **As of mid-December, there are only 2 or 3 spots still available!**

To reserve your spot: Please send in a deposit check of \$250 per person, preferably by November 15, 2015.

Full payment due by January 15, 2016. No refunds after January 15, unless you can fill your spot. See our Trip Cancellation Policy.

Please use the **Dough Transmittal form** on the **Forms & Docs** page on our web site, or on the next to last page in our newsletter. Make check payable to **Mountain High Snowsport Club**, and mail it to: Mountain High, PO Box 2182, Portland, OR 97208.

Trip leader: Emilio Trampuz, Emilio2000@earthlink.net, 503-378-0171.

More ski trips info at: www.mthigh.org/Trips.htm.



Lost Trail

Mt. High

Crystal Mountain, WA



March 18-20, 2016 A weekend bus trip, 2 nights/2 days. We leave Friday around 5:00 pm. Lots of fun on the bus – this is the best way to get to know other club members! We'll return Sunday by 8:30 pm.

Crystal Mountain is the largest ski area in Washington with 3,100 vertical feet of skiing, with over 50 named runs. There's everything from gentle groomed cruising runs for beginners to challenging steeps - backcountry, glades, chutes and unbelievable black runs for the more adventurous. This is why SKIING Magazine voted Crystal Mountain the #7 top mountain in North America. **As of mid-December, this trip is approximately half-full.**



Linda McGavin
at Crystal Mt.



There is one 8-passenger gondola (included in all tickets as of this year), 2 six-pack hi-speed lifts, 2 hi-speed quads, 2 triples, and 3 doubles., serving 2,300 acres of lift served terrain, plus 500 acres of backcountry.

NEWS: Two lifts have been replaced by new ones :

1. **The High Campbell Chairlift**, for experts only, which was destroyed in an avalanche this past season, was replaced by a new fixed grip double chairlift made by SkyTrac, the only American ski lift manufacturer.
2. **The Quicksilver fixed-grip double chairlift**, serving intermediate terrain, was replaced by a fixed-grip quad lift.

Lodging: We'll stay in the town of Enumclaw, 45 minutes from the mountain. Most of us will be in queen beds, but the first 3 couples who sign up and request it will get a king bed. There is no breakfast in the hotel, but there's Charlie's Cafe, a breakfast place right across the parking lot that opens at 5 am.

Price = \$250. This includes all bus transportation, 2 nights' lodging, one dinner, and one lift ticket.

The reason for only one lift ticket is that on Sunday, March 20, Crystal Mountain is allowing all NWSCC club members to buy tickets at half price, but you have to go to the ticket window yourself and show your NWSCC card (i.e. your club membership card; you'll get it when you renew your club membership for this season).

Use the [Dough Transmittal form](#) on the page before last (or on our FORMS web page) to send **\$100 deposit**, due by November 30. Full payment due by February 15, 2015. No refunds after February 15 unless you can fill your spot. Contact trip leader **Linda McGavin** at (503) 652-2840 or e-mail Trips@mthigh.org.



MOUNTAIN HIGH

FWSA Trips / Ski areas

SNOWSPORT CLUB

FWSA

Far West Ski Assoc. Trips



Click on underlined blue links or go to www.FWSA.org.

FWSA SKI Week: Telluride, CO



January 30 - February 6, 2016. A week of skiing and racing. Price: \$1,210 - \$1,430 per person depending on the type of lodging. This includes 7 nights lodging, 5 lift tickets, banquet, council party, apres ski, races, & more. Air not included.

Mail check to: NWSCC Whistler Trip, 5331 SW Macadam Ave. Suite 258, Box 438, Portland, OR 97239. Contact: **Chris Ciardi**, c2blondie@hotmail.com, 503-297-5351
Barbara Bousum: BBousum@gmail.com 503-224-3584



FWSA European Ski Week: Cortina, Italy.

March 5-12, 2016. Price for land package: TBA pp. Includes: 7 nights lodging, daily breakfast, welcome and farewell parties, 5 nights dinner (2 nights free to explore local restaurants). Air and lift tickets not included.

Optional post-trip to Florence and Rome.

Make checks out to: Far West Ski Association (FWSA) for "FWSA 2015 Int'l Trip". Send to: Debbie Stewart, FWSA VP of Int'l Travel, 430 S. Church St., Visalia, CA 93277. FwsaIntlTrvl@prodigy.net

FWSA Mini Ski week: Crested Butte, CO.



March 21-26, 2016 (5 nights / 3 or 4 days of skiing). Price TBA.

Included: 5 nights lodging. Contact:

Nancy Ellis, VP North American Travel, P.O. Box 9681, Truckee, CA 96162. 530-414-8261 [C]

Ski Area News

Meadows: Shooting Star Lift Damaged

The Shooting Star lift at Mt. Hood Meadows is currently on "maintenance hold" due to wind damage. On the night of Tuesday, November 17, 2015, the windstorm brought winds averaging 71 mph, with a top gust recorded on Cascade of 115.4 mph! During that storm, two large living hemlock trees, measuring 24-to-32 inches and approximately 80-to-100 feet in height, fell across both cables of the Shooting Star lift line, approximately 100 feet uphill of Tower 1. The trees were removed, but the lift still needs some maintenance. Details on [Mt. Hood Meadows blog](#).

Squaw Valley - Alpine Meadows connect

Squaw Valley has updated its Siberia Express lift to a new high-speed six-pack chair. The resort has also signed a firm agreement to finally build a gondola link to Alpine Meadows to Squaw valley but, in the interim, daily shuttles between the resorts will continue at 20-minute intervals.

Hemlock, B.C. - from Small to Giant

If you haven't heard of the Hemlock ski area in British Columbia, you soon will, due to a massive expansion. It's north of the town of Chilliwack, in the Fraser Valley, north of the Fraser and Harrison rivers. It currently operates 35 trails and 4 lifts on 875 acres.

The British Columbia government has approved a plan to expand the resort to almost 15,000 acres, with 23 chairlifts and 20,000 hotel beds. The expansion will include hiking trails, horseback riding, a downhill mountain bike park, zip lines, tree walk adventures, an 18-hole golf course, boating and swimming on Harrison lake. Development will occur over the next 60 years.

Silver Star Expands Terrain

Silver Star ski resort in British Columbia, Canada has added over 100 acres of additional ski terrain, a new race center, and expanded winter sports options. The gladed tree skiing at the intermediate and expert levels has expanded by more than 90 acres.

Let's try the Mt. Hood Express bus from Sandy



We will probably continue to meet up in Sandy and carpool from there. But let's also try the Mountain Express bus service from Sandy to Skibowl, Government Camp and/or Timberline for just one way fare is just **\$2**. That's less than you'd spend on gas!

Catch the bus at the Mt. Hood Forest Center Park & Ride, next to Hwy. 26, at a bus stop half way between Champion Way and 362nd (which is the Fred Meyer traffic light in Sandy). Turn into Champion Way to park at the Mt. Hood Forest Center.

See the map for the exact location.

The most convenient time for us is:

1. Leave Forest Center Park & Ride at **7:45 am**, arrive at Skibowl West at 8:32 am, arrive at Timberline at 9:00 am.
2. Depart from Timberline at **2:45 pm** or **4:45 pm**. arrive in Sandy at 3:58 or 5:58 pm.

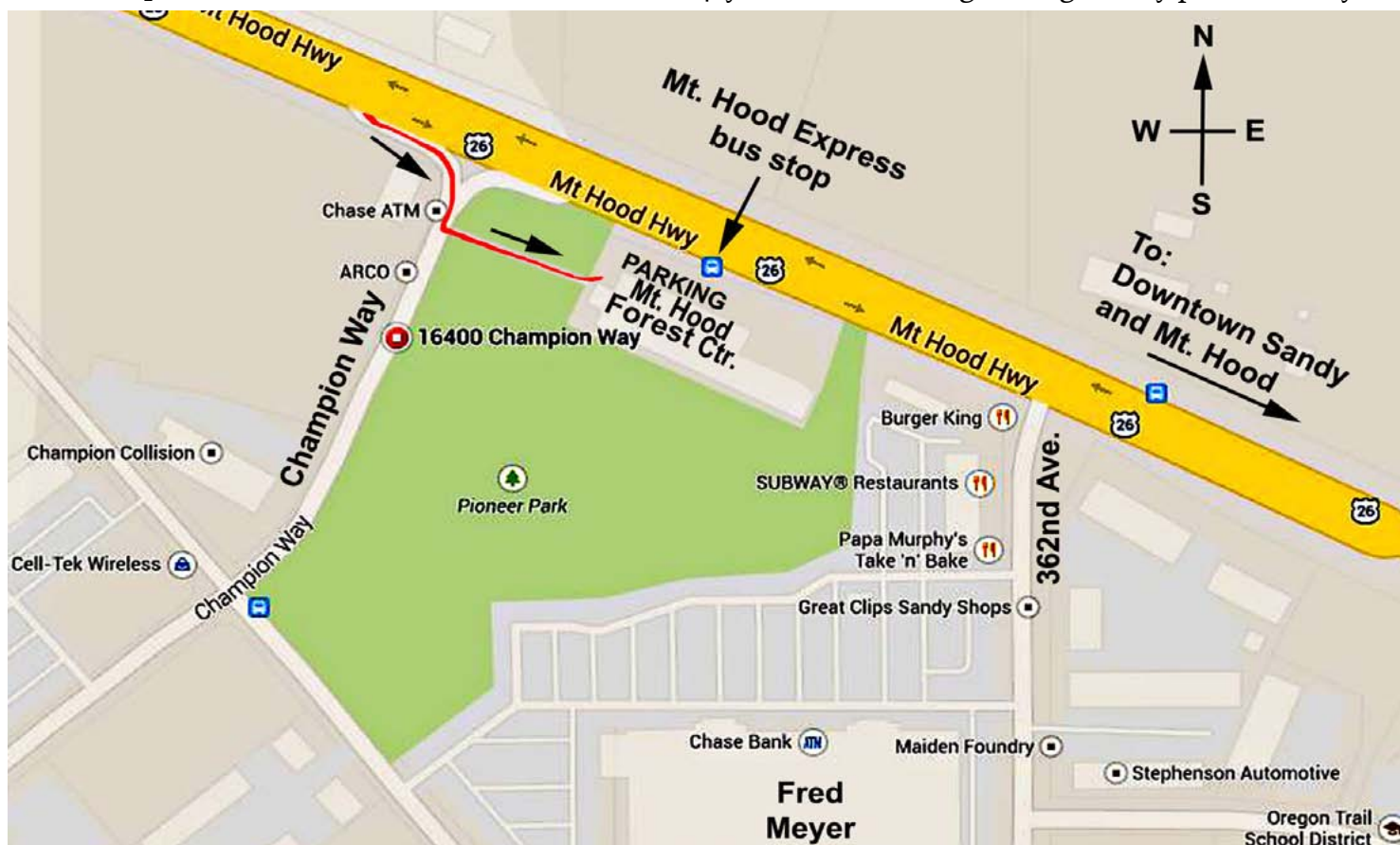
See the schedule on the Clackamas County Mountain Express website, www.clackamas.us/socialservices/documents/MTX%20schedule%2010-2013.pdf

The bus runs several times a day. It stops at two places in Government Camp, very near the end of the Glade trail and the Alpine trail, so we can use the bus for uphill transportation to Timberline whenever we chose to ski all the way down to Government Camp.

Instead of paying \$2 for each bus ride, you can buy an all day ticket for \$5.

On which days will this happen? We don't have any fixed dates. We'll post the dates on the [Mt. High TRIPS](#) web page (see [Weekend day trips](#)), and we'll also try to let everyone know via an email blast.

Also, you can communicate directly with other club members using our online [Forum](#). Feel free to announce your intentions to go skiing on any particular day.



The **NW Ski Club Council** has been rewarding skiers and snowboarders who visit lots of Northwest ski areas. One or more lucky winners each year have a chance to win a prize. The list of qualifying ski areas includes Alaska, Hawaii, British Columbia and Mammoth Mt., California. Only the ski areas shown on the map qualify, and that includes all of Oregon, Washington and Idaho, plus many ski areas in other States and Provinces.

Ski or ride any 7 or more resorts shown on the map during the 2015-2016 ski season to be eligible to win a prize. The more ski areas you visit, the greater your chance of winning. Just save your lift tickets or receipts, and qualify a prize! The winners of the drawing will be announced in the Fall of 2016.

To qualify for a prize, submit your lift tickets (or receipts) to: **NWSCC**, 5331 SW Macadam Avenue, Suite 258, Box 438, Portland, OR 97239. More info on our Council's web site: www.nwskiers.org. Also, see the [Articles](#) page on the Mt. High web site for several articles documenting some of the previous Ski Challenges.



Last year's challenge winners

The winners for the previous winter season will be announced on December 16, 2015, at the NWSCC meeting at the Buffalo Gap.

The prizes consist of lift tickets and/or gift certificates to local ski shops.

You too can be a winner. Just save your lift tickets or your credit card receipts from each ski area you visit, and submit it to the NWSCC at the end of the season.

New Challenge

The new challenge, for 2015-2016 starts now! Start saving your proof of purchase at every ski area you visit!



Northwest Ski Club Council Ski & Ride Challenge

Qualify for a prize: ski or snowboard in a single season at least 7 ski areas shown here: in British Columbia, Colorado, Hawaii, Idaho, Oregon, Montana, Washington, and Wyoming. Just save your lift tickets and/or receipts.



Also included:

COLORADO
Aspen/Snowmass

IDAHO
Brundage Mt.
Schweitzer Mt.
Sun Valley

MONTANA
Whitefish Mt.

WYOMING
Grand Targhee
Jackson Hole

BRITISH COLUMBIA
Big White
Sun Peaks
Whitewater
Kicking Horse
Fernie
Kimberley
Nakiska



MOUNTAIN HIGH**Contacts / Club info****SNOWSPORT CLUB****Man & Woman of the Year nominations**

Each year, usually in March, our club honors a Man and Woman of the Year for their contribution to our club and to the sport in general. For a list of previous winners, see the Awards page on our web site.

Please send in your nominations for 2016 to any member of our Board by the end of February.

Mountain High Meeting

Usually last Monday

Dec. 28 (Mon.): Open to all who want to get involved with the club. Gather at 6 pm. Start at 6:30 pm.

Location: Round Table Pizza, 10070 SW Barbur Blvd. (near Capitol Hwy.)

Mountain High snowsport club contacts:

President:	Debbi Kor	H: 503-314-7078,	President@mthigh.org
Vice-President:	Terry White	H: 503-781-4558	TWhite223@msn.com
Secretary:	Steve Royce	H: 503-413-0493,	wsroyce49@frontier.com
Treasurer:	Nancy Pratt	H: 503-593-9427,	Treasurer@mthigh.org
Past President:	Kurt Krueger	H: 503-625-1492,	President@mthigh.org
Membership Director:	Karen Michels	H: 503-984-9210,	skiklynn@gmail.com
Race Director:	Bruce Kuper	H: 503-975-8039,	bruku@comcast.net
Newsletter Editor:	Emilio Trampuz	H: 1-503-378-0171,	newsletter@mthigh.org
Social Activities:	Debbi Kor	H: 503-314-7078,	ijustwannarun1@comcast.net
Golf:	Cal Eddy	H: 503-805-8606,	baebaw@ccgmail.net
Hiking:	Chris Brooks	H: 503-764-5323,	jruuffman@aol.com
Bike rides:	Jackie Bonillo	H: 503-663-3359,	jbon1960@comcast.net
Bike rides:	Karen Michels	H: 503-984-9210,	skiklynn@gmail.com
Biking / Hiking:	Chas Westergren	H: 971-506-7699,	Chashisk@Yahoo.com
Mid-week skiing:	Ken Brundidge	H: 503-720-0620,	KenBrundidge@comcast.net
Trip Director:	Linda McGavin	H: 503-652-2840,	Trips@mthigh.org
Trip Leader:	Sandra Smith	H: 503-646-4591,	sandra@pacifier.com

General info:
info@mthigh.org

Web site:
www.mthigh.org

DOUGH TRANSMITTAL FORM

Mail check payable to: Mountain High Snowsport Club, PO Box 2182, Portland, OR 97208.

PLEASE PRINT CLEARLY: ☐ New membership or ☐ Renewal

Name(s): _____ Birthday (MM/DD) _____

Address: _____

Phone (Hm): _____ Phone (Wk): _____

Email (Hm): _____ Email (Wk): _____

Email Preferences: - Newsletter (once a month): ☐ yes, link only ☐ yes, complete file ☐ no
☐ No changes - Club news & events (between newsletters): ☐ yes ☐ no
 (same as last year) - Other ski news (NWSCC, FWSA, ski areas, trips...): ☐ yes ☐ no
 - Is it OK to share your email address with other club members? ☐ Yes ☐ No

Please take my money, and apply it toward the following Ski Club fun stuff: **Deposit?** **Paid in full?**

<input type="checkbox"/> Annual Membership (Oct. 1, 2014 - Sept. 2015): Single (\$25); couple (\$40)	\$ _____	_____
<input type="checkbox"/> PACRAT Racing (2015) \$99 for the whole season . Team: _____	\$ _____	_____
<input type="checkbox"/> Canada trip (Jan 24-30). Adult=\$1095, w/Fusion=\$888. Senior=\$1033, w/Fusion=\$849. Dep.=\$250	\$ _____	_____
<input type="checkbox"/> Montana trip (Feb 21-27). Total=\$825. Dep.=\$250 (Please circle your choice above)	\$ _____	_____
<input type="checkbox"/> Crystal Mt. trip (March 18-20). Total=\$250. Dep.=\$100	\$ _____	_____
<input type="checkbox"/> Other: _____	\$ _____	_____

Comments (For whom you are paying. Roommate requests,...): _____

Signature(s): _____ Date: _____

Signature(s): _____ Date: _____

See our Trips cancellation policy on our web site: <http://www.mthigh.org/Documents/Trip-Cancellation-Policy.pdf>

Club membership = 304 Newsletter Distribution

The December issue is posted on our web site. Also:
277 copies sent via email (as PDF files)
18 paper printed copies sent via US Mail.
 Copies are also sent to potential members, other clubs,
 the National Ski Club Newsletter, etc.

Count Your Ski Areas

Set up your own counter of ski areas visited. Use a modified form of John and Jewel's spreadsheet with 3 added columns, for up to 3 more people. Make one of these your own. Enter a "1" for every ski area visited. See: <http://www.mthigh.org/Documents/North-American-Ski-Areas-2014-5-25.xls>

NW Snowsports Guide



The NW Skiers' Directory has changed its name to the NW Snowsports Guide. It is available online. You can flip pages by clicking in the lower right corner, or swiping if you have a touch sensitive screen. You can also zoom in and out by clicking anywhere else on the page. See it at: <http://www.nwskiers.org/SkiersDirectory/SkiersDirectory/#/1/>

You can also find free printed copies of this 60 page booklet at local ski shops. Our very own **Linda McGavin** is the editor of this annual publication.

Shred Hood



Shred Hood, a very informative online magazine, published by **Ben Jacklet**, covers everything related to Mt. Hood, including:

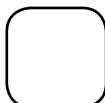
- * [Races, Rail Jams & Rescues](#) on Mt. Hood
- * [Just Keep Climbing](#) - climbing and skiing Mt. Hood
- * [Resorts push for new skiing statute](#),
- * [Preserve the old Mt. Hood highway as a trail](#),

This is just a very small sample of the wealth of information available on the Shred Hood site. Subscribe for free. Just enter your email address in the blue box on the right side of the page at ShredHood.org

Sno-Park Permit



Remember to buy a sno-park permit. You can get it at the DMV and at local ski stores.



Emilio Trampuz
 Mountain High Newsletter editor
 4742 Liberty Rd. S., #296
 Salem, OR 97302
 Please check our web site,
www.mthigh.org
 for updates.