



Lift Lines

= No. 167, November 2014 =

Mountain High Snowsport Club, PO Box 2182, Portland, OR 97208



From the Prez



Hey Mt. High-ers.

Fall has definitely fallen. I am so glad that we live in a part of the country that has changing seasons. The colors of the turning leaves is absolutely beautiful! Maybe it's time to do a trip up the Columbia River Gorge, take in some of the wineries, drive across the Bridge of the Gods, and enjoy the view from the Vista House.

*The temperatures are coming down, and soon the snow will be too. To get everyone psyched up for the coming season, Sandra Smith organized our annual outing to The **Warren Miller Film** on October 24th, preceded with dinner at Pastini's in downtown Portland. Sandra did a great job putting the event together. This coming weekend will be the annual **Portland Ski Fever Show** at the Expo Center. Come join your friends for a couple hours working the Council's booth, buy your season's pass, or just check out what's new for 2015.*

*The Northwest Ski Club Council's **Ski Fair** will be Monday, November 17th at the Holiday Inn, Airport, followed by our own annual Membership Kick Off Party on Thursday, November 20th, at the Gray Gables. Come renew your membership, visit with old friends, have a bite to eat, and see what the club has in store for us this coming season. We have a lot of great trips planned, some fun activities and plenty of race days scheduled to keep everyone busy for the coming year. Stay tuned to your **Lift Lines** for the specific event dates and to see what else is happening with our club.*

Debbi

Who is a member of the NW Ski Club Council?



Note the color code.
Our club is blue.

2014 - 2015 CALENDAR

Blue: Mountain High events
Red: NWSCC / FWSA / Multi-club
Black: General events

NOVEMBER

Nov. 8 - 9: Ski Swap - Grant/Cleveland
Nov. 10 (Mon.): Mike Wiegele Heli Ski Presentation
Nov. 14-16: Portland Ski Fever Show
Nov. 15 (Sat.): Pray for Snow party
Nov. 17 (Mon.): NWSCC Ski Fair
Nov. 19 (Wed.): PACRAT Membership Pizza Party, Buffalo Gap, 6 pm
Nov. 20 (Thurs.): Mt. High annual Kickoff Party, Gray Gables 6:30
Nov. 24 (Mon.): Mt. High Board mtg

DECEMBER

Dec. 5 - 6 (Fri.-Sat.): Sandy High ski swap + Warren Miller movie
Dec. 17 (Wed.): NWSCC Meeting, PIE Auction + PACRAT bib pickup

JANUARY

Jan. 4 (Sun): NASTAR race
Jan. 9-13: NWSCC Utah trip, SLC.
Jan. 10-16: Revelstoke+Sun Peaks trip
Jan. 11 (Sun): PACRAT race 1 Skibowl
Jan. 25 (Sun): PACRAT race 2 Meadows
Jan. 31 - Feb. 7: FWSA Ski Week: Whistler/Blackcomb

FEBRUARY

Feb. 8 (Sun): PACRAT race 3 Skibowl
Feb. 22 (Sun): PACRAT race 4 Meadows
Feb. 21-27: Lake Tahoe Sampler trip
Feb. 28- Mar. 6: Whitefish + Fernie trip

MARCH

Mar. 14-21: FWSA Val d'Isere trip
Mar. 15 (Sun): NASTAR race
Mar. 20-22: Crystal Mt. bus trip
Mar. 22 (Sun): PACRAT race 5 Timberline

Mt. High

Warren Miller dinner + movie "No Turning Back"



Oct. 24, 2014 (Friday). This dinner and a movie has been a tradition in our club for the past 10 or 20 years. **Sandra Smith** organized it. She purchased **66** movie tickets, and about **30** people came to the pre-movie dinner. We had dinner at **Pastini Pastaria**, where the service was fast and efficient. Some of us enjoyed visiting with members of the Bergfreunde club who were also there, in a different section of the restaurant. The movie "No Turning Back" was full of death defying stunts and incredible steepes, as usual. One of the new aspects of skiing covered this year was "Speed Riding" or "3D Skiing", combining parasailing and skiing.



Mt. High

Looking for Ski Buddies / Mentors for Beginners



Here is an interesting idea that might perhaps help rejuvenate our club and attract new members of all ages. Let's help non-skiers (i.e. total beginners) to get into the sport. It's a win-win. The sport gets new skiers. The club gets new members. The newcomer gets new "wings" (i.e. skis). Everybody is happy!

There are people who might like to try skiing but don't know where to start. Nobody in their family skis. They are overwhelmed with questions about equipment, lessons, where to go, what to do. Henry Bendinelli president of the Mt. Hood Ski Kats Club heard one such beginner say: "It's all so intimidating, and I don't know where to start." So, why not offer them a helping hand? Henry proposed "**mentoring**" them. Jon Tullis, Timberline's Public Relations Manager, proposed calling these "mentors" simply "**ski buddies**". In our club, this would mean:

1. **A few volunteers** prepared to be ski buddies or mentors to beginners, to help guide them through the first steps. If the beginners have a good time the first time, they'll be back for more!
2. **Ways to work with beginners.** The volunteers would introduce people to the sport in a number of ways:
 - a) Answer people's questions about clothing (how many socks to wear), equipment, how to get started, etc.
 - b) Encourage them to take a lesson with a qualified ski instructor.
 - c) Meet them on the mountain for a day on the slopes.
 - d) Invite them to our club, to our trips, parties, races, etc.
3. **Advertising.** Word of mouth would help, but we should also use other means to let total beginners know they can find some help here. We could set up an email address devoted to beginners' questions; something like: questions@mthigh.org. Also, set up a page for beginners on our web site, as well as a Facebook page devoted to beginner skiers. Put up flyers all over town. A display at the Ski Fair. Maybe even put an ad in the papers.

If you would like to volunteer, at least from time to time, please contact **Emilio** at Emilio2000@earthlink.net

See more photos at www.mthigh.org/Photos.htm.

MOUNTAIN HIGH

Upcoming events

SNOWSPORT CLUB

NWSCC Ski Fair at the Airport Holiday Inn



Nov. 17 (Monday)
6-10 pm Admission: FREE.

One day only, at the **Conference Center** next to the **Airport Holiday Inn**, 8439 NE Columbia Blvd.

Meet local ski clubs and ski areas. participate in the **Silent Auction, Raffle**, and more! See what's new.

As part of the auction, you can get great deals on lift tickets, lodging, ski trips, ski gear, and more.

You can also **renew your club membership** at our club's booth. You can also sign up for trips, join a PACRAT team, and more.

To volunteer to staff the Mt. High booth, contact **Karen Michels**, skiklynn@gmail.com

Nov. 19 (Wed.) 6 pm: PACRAT Membership Pizza Party. See next page!

NWSCC, Schnee Pray for Snow



Nov. 15, 2014 (Saturday) - Starting at 6 pm.

Annual event to help usher in the Winter season, with a live band, dancing, revelry, and the company of friendly skiers. It's organized by the **Schnee Vogeli** ski club, but members of ALL local ski clubs are invited.

Location: **Charlie's Pub & Restaurant**, Government Camp.

Tickets: \$15, must be purchased in advance (Limited quantities). Ask the following people for tickets:

Gordon Lusk: GordyLusk@hotmail.com, 503-804-8363

Dale Parshall: dale.parshall@usbank.com

There will be no tickets at the door. This event fills up!

Ski Fever & Snowboard Show - Expo Center



Nov. 14-16 (Fri - Sun.)
Admission: \$13.

Big annual ski show at the Expo Center. Great deals on ski clothing and equipment. Many freebies.

Live demonstrations. More info at: www.portland-skifever.com.

If you want to volunteer to staff the NWSCC booth for a 3-hour shift (representing ALL local ski clubs) in exchange for a free admission to the show, contact **Mary Olhausen**, omary52@comcast.net.

Mt. High Mt. High Kickoff Party + Mini Ski Swap



November 20 (Thursday), 6:30 - 9:00 pm.

Our biggest party of the year, marking the start of a new ski season. Come enjoy the following:

- * Free food, soft drinks, and prizes. No host bar.
- * Meet your fellow club members.
- * Renew your membership (\$25 singles; \$40 couples)
- * Sign up for trips.
- * Join a PACRAT racing team.
- * Bring a friend.
- * Bring something to sell or swap. We'll have a mini ski swap, just like we've done for several years now. Bring your skis, jackets, or anything you'd like to sell.

Location: Gray Gables Estate. See [MAP](#).
3009 SE Chestnut Street, Milwaukie.

More info on our web site:

http://www.mthigh.org/#Membership_Party

PACRAT News

Pacific NW Area Clubs Recreational Alpine Teams



Bruce Kuper
Mt. High Racing Director

If you are at least a bit curious about how our recreational racing works, come to our introduction to racing at the upcoming **PACRAT Membership Pizza Party**, Wednesday, November 19, 6 pm - 8:30 pm, at the Buffalo Gap Saloon on Macadam Ave.

Now is the time to re-group and form our teams again.

Ideally, we should have our teams completed by the annual Mt. High Membership Party, November 20.

Here are the race dates for 2014/15.

Jan. 4 (Sun): NASTAR race

Jan. 11 (Sun): PACRAT race 1 - Skibowl

Jan. 25 (Sun): PACRAT race 2 - Meadows

Feb. 8 (Sun): PACRAT race 3 - Skibowl

Feb. 22 (Sun): PACRAT race 4 - Meadows

Mar. 15 (Sun): NASTAR race

Mar. 22 (Sun): PACRAT race 5 - Timberline

Apr. 4 (Sat): PACRAT Make-up race (only if needed)

Apr. 17 (Fri.): Rat Attack awards dinner party

Check out PACRAT racing with Mt. High Snowsport Club here:

<http://www.mthigh.org/Racing.htm>

Hand out a poster: http://mthigh.org/Racing/PACRATPoster_2014.bmp

PACRAT Membership Pizza Party



Nov. 19 (Wednesday) 6 pm

You are invited to an introduction to recreational PACRAT racing at the **Buffalo Gap Saloon**, 6835 SW Macadam Ave. Portland OR 97219.

Never raced before? No problem, you will be grouped with others at your skill level.

Need someone to ski with? We'll give you 9 companions for the season. Just sign up

and you will be on a 10-person team. Any intermediate

Mt. High Team captains

Team name	Team captain	Email address
Avalanche Express	Gary Gunderson	ktgpdx@frontier.com
Blizzardos	Linda Eidemiller	2lindaloo@gmail.com
Chilled Brewskis	Brenda Becerra	LetsPlayOnTheMt@hotmail.com
Frosted Flakes	Stevie Viaene	stevie.viaene@gmail.com
Infra-Rats	Garth Eliason	gweliason@gmail.com
Lab Rats	Lonny Schiller	landkschiller@gmail.com
Mixed Nuts	Samy Fouts	samyfouts@comcast.net
Moose on the Loose	Scott Stepan	s_stepan@hotmail.com
Mt. Hoodlums	Phil Mant	phil6666@aol.com
Rat Racers	Alan Bean	abean@nwgeotech.com
Rattitudes	Chris Wiley	Chris2007@Yhuji.com
Schussing Shysters	McCoy Smith	McCoySmith@comcast.net
Vertigo Madness	Tom Cansler	tomcansler@qualitytank.com

Anyone who isn't already on a team but would like to try running some gates, please contact our Race Director, Bruce Kuper, at bruku@comcast.net, or contact any of our team captains listed above.



David Papworth on the "Schussing Shysters" team

skier or boarder qualifies. Beginner racers contribute to the overall team score as much as advanced racers and maybe more.

The PACRAT League is the result of cooperation between several clubs. Our club has participated from the very beginning, with at least 4 to 6 teams each year. In the 2014-15 season, we will have 13 teams (130 racers).

This is your best opportunity to find out more and to join a team. If you can't make it, then try the following:

The **Ski Fair** (Monday, Nov. 17). Visit PACRAT booth.

At the **Kickoff Party** (Thursday, Nov. 20), we'll have an information table for PACRAT racing. Any racers are welcome to help staff that table, answer questions, and talk people into joining a PACRAT team.



Q & A about Whitefish trip

Q: Can I get a sleeper car on the Whitefish trip?

A: Don't count on it at this stage. 12 of the 14 beds we have reserved are already taken. We will be paying attention to who signed up when, to give priority to those who signed up early. Then we will start a waiting list, in case there are any cancellations.

AMTRAK has a very strange system for selling beds in the sleeper cars. The first few seats are relatively affordable, but then each additional bed costs more and more. We have already reserved all the affordable beds. The price of any remaining beds is now around \$300 or more (for one bed in both directions).

We will not even attempt to reserve any of the expensive beds. If you are not among the lucky 14 who have already signed up, you can try contacting AMTRAK yourself and paying for a sleeper car directly to them. Just let Emilio and Sandra know what your plans are.

Q: If I sign up for just the basic 3-day pass at Whitefish, do they have to be 3 consecutive days? Or can I ski on any 3 days of my choice?

A: Yes, you can ski on any 3 days. They don't have to be consecutive. You can also buy additional day tickets for the other 2 days, but if you do that during the trip itself, you will have to pay the \$71 full price at the ticket window. In order to get the discounted group tickets at only \$44.10 per day, we have to purchase them as a group before the trip. Once the trip starts, it will be too late.

So, it is important that you let Emilio know in advance how many days you plan to ski, 3, 4, or 5. Note that a 3-day pass is automatically included. If you want a 4 or 5 day pass, please send in an additional \$44.10 for each additional day.

Q: How comfortable are the coach seats?

A: It depends. On previous trips to Whitefish, some of us got really comfortable recliner seats with leg rests. They recline like a Lazy Boy chair. But other people were not so lucky. They got seats that recline only a little, like seats on a plane, and have no leg rests. Those seats were not comfortable for sleeping. We don't know why the difference. We'll investigate and we'll try to get the good seats.



Q & A about Fernie

Q: On which day will we go to Fernie?

A: On Tuesday, March 3, right in the middle of our 5 days at Whitefish. We will have to reserve a bus and buy group tickets in advance, so we had to fix the day.

Q: How is Fernie different from Whitefish Mt.?

A: Both are large ski areas. The scenery at Fernie is more "Alpine" or more "Rocky Mountain", with jagged peaks. Fernie consists of 5 separate bowls. Fernie has 2,500 acres, which is 500 acres less than Whitefish Mountain. But, Fernie has much more vertical, a total of 3,550' compared to Whitefish's 2,353'. This means Fernie has about 1,200 feet more vertical.

Fernie has 10 lifts (2 are high speed quads). Whitefish has 14 lifts (3 are high speed quads).

Q: What will the Fernie day trip be like?

A: We'll have to get up early in the morning to board our charter bus to Fernie around 6:30 am. It's a little over 2 hours to Fernie, and we have to cross a border.



The border crossing will hopefully be quick and smooth as we plan to contact customs agents ahead of time and provide them with a list of our trip participants.

But, remember, you will have to have your passport with you!

We will arrive at Fernie just shortly before the lifts open at 9 am.

We'll ski there all day and depart around 4 pm. We should be back at our condos at Whitefish by about 6:30 pm.

2014-2015 Winter Trips

NOTE: On the Whitefish trip, a 3 of 5 days pass is included in the price, and for an additional \$44.10 per day, you can order a 4 or 5 day pass. You can use the pass on ANY of the 5 days we'll be there. We suggest that everyone ski at Whitefish on days 1, 2, and 5. Day 3 would be perfect for a visit to Fernie. Day 4 is optional (ski, shop, sightsee, cat ski).

Near the top of Whitefish Mt.



Whitefish trip price includes round trip train seat, 4 nights ski-in/ski-out lodging, 3 day pass at Whitefish, and at least one dinner:

Adults = \$638,
Seniors (65+) = \$606
Super Seniors (70+) = \$497

Additional train option:

1. Sleeper bunk bed on train: **\$235** (round trip, pp/do)

Other trip options: (all based on group discounts)

1. Additional Whitefish tickets = **\$44.10** per day
2. Fernie day trip = Approximately **\$105**.
3. Snowcat skiing = Approximately **\$395 - \$250**.

In order to get the group discount price, all these options must be reserved in advance. So, let us know your intentions right away. Mark it on the sign-up form.

Payment schedule:

1. **\$100 deposit** due now to reserve your spot.
2. **Half of the total amount** is due by November 27.
3. **Full payment** due by January 14. No refunds after January 14 unless you can fill your spot. See our Mt. High [Trip Cancellation Policy](#).

Please use the [Dough Transmittal Form](#) (on the page before last) or find the form on the FORMS & DOCS web page. Make check payable to **Mountain High Snowsport Club**, and mail it to:

Mountain High, PO Box 2182, Portland, OR 97208.

More ski trips info at: www.mthigh.org/Trips.htm.

Mt. High Whitefish Mt. train trip

February 28 - March 6 (Sat. - Fri.) 2015

We'll leave Portland on Saturday afternoon, by train. Arrive in Whitefish at 7:30 am, leave our luggage in the on-mountain condo, and hit the slopes!

We'll spend a total of 5 days there, returning on the evening train on Thursday, March 6, and arriving back in Portland around 11:15 am Friday morning.

Whitefish Mountain (formerly Big Mountain) offers 2,353 vertical feet, over 3,000 acres, served by 14 lifts, of which 3 are high speed quads.

This coming season, Whitefish is installing a new triple chairlift that will open 6 new trails and some glade skiing.

We will stay in ski-in/ski-out condos within the on-mountain village. The basic trip will include a **3-day pass** to Whitefish, thus leaving 2 days (in the middle of the week) for other optional activities. Our options are:

1. **Ski** at Whitefish for an additional **\$44.10** per day.
2. **Take a rest** day for shopping or sightseeing.
3. **Day trip to Fernie** (Canada), just 2 hours and 15 minutes north. 3,550' vertical. If 20+ of us go, we can rent a bus. Cost is about **\$105** for bus and lift ticket.
4. **Snowcat skiing** with the Great Northern Powder Guides, just 25 minutes north of Whitefish. The cost is \$375 per person per day, plus \$15 for transportation from our condos to the site. The \$15 fee will be waived if at least 8 or more of us sign up. This has to be booked well in advance. The price can go down to just \$250 per person if we manage to get 14 people.

In order to get group discounts for the above, we need to commit to a plan ahead of time. So, visualize yourself there, and try to answer the following questions:

- a) How many days will you ski at Whitefish, 3, 4, or 5?
- b) Which side trips do you want (Fernie, Snowcat)?

Most likely, most of us will ski Whitefish on days 1 and 2 (Sunday and Monday), and also on the last day (Thursday). The two optional days are Tuesday and Wednesday, March 3 and 4.

Two nights will be spent on the train, one in each direction. Everyone needs to decide whether to sleep in a comfortable reclining chair (included), or pay **\$235** extra (round trip, pp/do) for a bunk bed in a sleeper car.

Your trip leaders are:

Emilio Trampuz, Emilio2000@earthlink.net and
Sandra Smith, sandra@pacifier.com

Mt. High

Crystal Mountain, WA



March 20-22, 2015 A weekend bus trip, 2 nights/2 days. We leave Friday around 5:00 pm. Lots of fun on the bus – this is the best way to get to know other club members! We'll return Sunday by 8:30 pm.

Crystal Mountain is the largest ski area in Washington with 3,100 vertical feet of skiing, with over 50 named runs. There's everything from gentle groomed cruising runs for beginners to challenging steeps - backcountry, glades, chutes and unbelievable black runs for the more adventurous. This is why SKIING Magazine voted Crystal Mountain the #7 top mountain in North America.



Linda McGavin
at Crystal Mt.



There is one 8-passenger gondola, 2 six-pack hi-speed lifts, 2 hi-speed quads, 2 triples, and 3 doubles., serving 2,300 acres of lift served terrain, plus 500 acres of backcountry.

NEWS: Two lifts are being replaced by new ones in time for this winter:

1. **The High Campbell Chairlift**, for experts only, which was destroyed in an avalanche this past season, is being replaced by a new fixed grip double chairlift made by SkyTrac, the only American ski lift manufacturer.
2. **The Quicksilver fixed-grip double chairlift**, serving intermediate terrain, is being replaced by a fixed-grip quad lift.

Lodging: We'll stay at the Park Center Hotel in downtown Enumclaw, 45 minutes from the mountain, with easy access to a variety of restaurants and bars. Breakfast is provided for hotel guests, and there is an indoor hot tub.

The price is only **\$240** for the bus trip, 2 nights' lodging, 2 breakfasts, and one lift ticket.

Seniors (70 and over) pay only: **\$215**.

The reason for only one lift ticket is that on Sunday, March 22, Crystal Mountain is allowing all NWSCC club members to buy tickets at half price, but you have to go to the ticket window yourself and show your NWSCC card (i.e. your club membership card; you'll get it when you renew your club membership for this season).

Use the [Dough Transmittal form](#) on the page before last (or on our FORMS web page) to send **\$100 deposit**, due by November 30. Full payment due by February 15, 2015. No refunds after February 15 unless you can fill your spot. Contact trip leader **Linda McGavin** at (503)652-2840 or e-mail Trips@mthigh.org.

Whistler Cabin trip

Jan. 18-24, 2015. (Bill Leeper)
6 nights lodging/ 5 days skiing.
Carpooling. Cost approx. \$280 pp. includes lodging, daily breakfast, lunch & dinner. Everyone is encouraged to cook a dinner. Lift tickets are additional.

Lodging in a cabin near Whistler Village. Shuttle to lifts every 20 minutes. Contact **Bill Leeper**: 503-639-2603, wcleeper@hotmail.com.

Trip is limited to the 13 people that can safely fit in the cabin.

NW Ski Challenge

All season.

Ski or ride any 7 or more resorts during the 2014-2015 ski season to be eligible to win a prize. Just save your lift tickets or receipts, and mail them in at the end of the season.

Ski areas that count are all those in Oregon, Washington, Idaho, Alaska, Hawaii, as well as a few in British Columbia (Big White, Red Mountain, and Whitewater), and one in California (Mammoth Mt.).

Save your lift tickets or receipts!

Powder Alliance

All season.

[Get 13 ski areas for the price of one!](#)

Silver Star in Canada has joined the alliance this year.

Buy the **Fusion Pass** to Timberline and Skibowl and get 3 free lift tickets to all these: Schweitzer Mt. (ID), Bridger Bowl (MT), Stevens Pass (WA), Sierra-at-Tahoe (CA), China Peak (CA), Mountain High (CA), Snowbasin (UT), Snowbowl (AZ), Crested Butte (CO), Angel Fire (NM) and Silver Star (BC).

More ski trips info at: www.mthigh.org/Trips.htm.

FWSA

Far West Trips



Click on underlined blue links or go to www.FWSA.org.



FWSA SKI Week: Whistler / Blackcomb, January 31 - February 7, 2015. A week of skiing and racing in Canada. Price: \$1,299 - \$1,339 per person depending on the type of lodging. This includes 7 nights lodging, 5 lift tickets, banquet, council party, apres ski, races, & more. Air not included.

Last call! This trip is almost full.

Mail check to: NWSCC Whistler Trip, 5331 SW Macadam Ave. Suite 258, Box 438, Portland, OR 97239. Contact: **Chris Ciardi**, c2blondie@hotmail.com, 503-297-5351
Barbara Bousum: BBousum@gmail.com 503-224-3584



FWSA European Ski Week: Val d'Isere, France. March 14-21, 2015. Price for land package: \$1995 - \$2616 pp. Includes: 7 nights lodging, daily breakfast, welcome and farewell parties, 5

nights dinner (2 nights free to explore local restaurants). Air and lift tickets not included.

Optional pre-trip to Paris and post-trip to Provence.

Make checks out to: Far West Ski Association (FWSA) for "FWSA 2015 Int'l Trip". Send to: Debbie Stewart, FWSA VP of Int'l Travel, 430 S. Church St., Visalia, CA 93277. FwsaIntlTrvl@prodigy.net



FWSA Heli Skiing at Revelstoke, BC with CMH Heli-Skiing.

March 15 - 21, 2015. (5 nights / 4 days of heli-skiing). Fly to Kelowna, then go by CMH bus

or car to Revelstoke. Price = \$5,830 pp double occupancy (plus taxes) or \$6,480 pp single supplement (plus taxes). Contact: Nancy Ellis, FWSA VP North American Travel, 530-414-8261 email: vpnorthamericantravel@fwsa.org



FWSA Mini Ski week: Whitefish, MT.

March 30 - Apr 4, 2015 (5 nights / 3 or 4 days of skiing). Price = \$550 (3 days skiing), or \$600 (4 days skiing).

Included: 5 nights lodging at Grouse Mountain Lodge on the outskirts of the town of Whitefish with free shuttles to the mountain. Trip Leader: Gloria Raminha, 661-829-5996 [H], 661-800-8229 [C], garski2011@gmail.com

New NWSCC January UTAH Trip

January 9 - 13, 2015. Cost: \$539 (pp/do)

Time is very short to sign up for this trip, because we'll have to turn back spots before the end of November! Stay in Salt Lake City (south) and ski the Cottonwood Canyons: 4 nights' lodging and 4 days' skiing (if you ski the day of departure) for only \$539 pp/do! Stay at the Crystal Inn in Midvalley/Murray. Fly or drive to SLC on your own; the Crystal Inn has airport pickup for not more than 7-8 people at a time. The rooms are extra spacious, with a king or double queen beds, microwave, refrigerator, coffee maker, free wi-fi, daily hot breakfast and light supper are included. Details on our web site.

You will receive a **4-day SLC Super Pass** which allows you to ski at your choice of **Alta, Snowbird, Brighton, or Solitude**, and a free city bus pass included. You can ski the last day and fly out that night, or else arrange for a 3-day Super Pass. This is a GREAT deal, but you need to sign up right away!! Contact **Barbara Bousum** at travel@nwskiers.org or 503-224-3584. Plan to sign up by the membership party - checks payable to NWSCC - full payment required at the time of signup.

Bergfreunde Revelstoke + Sun Peaks



January 10 - 16, 2015. Carpooling trip.

Cost: \$540 (ppdo, land only) includes: 2 nights at the ski-in/ski-out 5 star Sutton Place Hotel at the base of the mountain. 4 nights at the ski-in/ski-out Sun Peaks Lodge, 3 breakfast buffets. Lift tickets (2 Revelstoke, 3 Sun Peaks): add \$315.

Make checks payable to **Bergfreunde Ski Club**.

Payments to: Bob Burns, 9980 SW Citation Place Beaverton, OR 97008. 503-524-5261 (phone/fax), bob@inkjetman.com. Details on Mt.High web site.

Bergfreunde Lake Tahoe Sampler



Feb. 21 - 27, 2015. Carpooling trip.

Cost: \$332 (ppdo, land only) includes: 6 nights lodging, 2 group dinners, Hospitality room Sun, Mon, Fri., a dinner dance cruise on the M.S. Dixie II paddle wheeler. Lodging in South Lake Tahoe. **Skiing:** We'll be playing it by ear and taking advantage of any lift ticket deals that are offered.

Make checks payable to **Bergfreunde Ski Club**.

Payments to: Bob Burns, 9980 SW Citation Place Beaverton, OR 97008. 503-524-5261 (phone/fax), bob@inkjetman.com. Details on Mt.High web site.

Lift tickets and Season Passes

Here is a comparison of various lift tickets and passes. Which pass is best for you depends on how much you'll ski. Will you ski enough times at the same ski area to justify a season pass? PACRAT racers will be able to get discounted lift tickets on their race days.

Remember that Meadows and Timberline will be offering **Spring Passes** valid for March, April and May, for about \$100 - \$130. Consider buying a 5 day or 10 day pass plus a Spring Pass, and they don't have to be at the same ski area. Also, note the following changes from last year:

1. The **Fusion Pass / Powder Alliance** now includes a total of 13 ski areas. Silver Star was just added.
2. **Vail's Epic Pass** now also includes Park City, which they have purchased recently.
3. The **Mountain Collective Pass** has added Ski Banff-Lake Louise and Sunshine, for a total of 14 ski areas.
4. All prices will increase in November, and Mt. Bachelor prices have already increased at the end of September.

Ski area / Name of Pass	1 Day	4 or 5 Day	10/12 Days	Season Pass	Senior Season	Season Pass description
Mt. Bachelor Includes 3 free tickets at each of: Boreal (CA), Copper Mt. (CO), Killington (VT), and Las Vegas ski resort (NV).	\$79	4-pack N/A	12-day \$575	\$1,069	\$599	Includes 12 free days at other ski areas owned by Powdr Corp. (3 days at each of the 4 ski area). Multi-day and season prices have already increased after Sept. 30.
Mt. Hood Meadows Includes 5 free days at Mt. Baker	\$74	5-days \$299	10-days \$399	\$499	\$379	Includes 5 free days at Mt. Baker Prices increase Nov. 2, Nov. 17.
Mt. Hood Skibowl	?	--	--	\$399	\$299	Prices increase Nov. 2, Nov. 16.
Timberline	\$68	5-days \$225	10-days \$375	\$399	\$149	Multi-day and season prices will increase after Nov. 17.
Fusion Pass/Powder Alliance Timberline + Skibowl + 3 free tickets at each of: Stevens Pass, Schweitzer, Bridger Bowl, Snowbasin, Sierra-at-Tahoe, China Peak, Mountain High, Arizona Snowbowl, Angel Fire, Crested Butte, and Silver Star.	--	--	--	\$499	\$249	Unlimited skiing at Timberline and Skibowl + 33 other free lift tickets, 3 tickets at each of 11 other ski areas. Silver Star (Canada) was added this year. Prices will increase after November 2.
Mountain Collective Pass 2 lift tickets at each: Whistler/Blackcomb, Aspen/Snowmass, Jackson Hole, Alta/Snowbird, Mammoth Mt., Ski Banff-Sunshine-Lake Louise, and Alpine Meadows/ Squaw Valley	--	--	14-time pass \$399	--	--	A 14-time pass, with a maximum of just 2 days at each destination, but additional days at each resort are 50% off. No blackout dates. To make the most of it, visit as many ski areas as possible.
Snowbomb Platinum Pass 5 lift tickets total, 1 at each: Homewood, Sierra-at-Tahoe, Bear Valley, China Peak, and Mt. Rose, all in California.	--	5-pack \$200	--	--	--	Also included are 2 free nights of lodging, Sunday - Thursday at the Grand Sierra Resort & Casino in Reno, NV. Also some discounts at other Tahoe ski areas.
Epic Pass (Vail Resorts) Vail, Beaver Creek, Breckenridge, Keystone, Heavenly, Northstar, Kirkwood, Park City, The Canyons, Arapahoe Basin, Afton Alps and Mt. Brighton.		4-day \$399	7-day \$569	season \$749	\$559	The adult full season pass (for \$749) is also valid Eldora, plus an additional 5 free days each at: Verbier (Switzerland), Niseko United (Japan), and Les 3 Vallees (France). No blackout dates.



Ski Mt. Baker for Free

If you have a Mt. Hood Meadows Season Pass this winter, you can have up to 5 free ski days at Mt. Baker. You might want to stop there for a day of skiing on your drive up to Whistler or Sun Peaks, or stop there on the return trip from Canada. The nearest cities to Mt. Baker are Bellingham, WA, and Abbotsford, B.C. The nearest border crossing is Sumas, WA.

Note that there are restrictions for free skiing at Mt. Baker. Your Meadows Pass will be valid Monday through Friday January 5th through February 28th. Then Valid every day from March 1st through the end of the 2014-15 season.

You must present a 2014-15 Meadows Pass and photo ID at the lift ticket office in exchange for that day's lift ticket.

New Lift with Heated Seats at Sunshine Village

Banff's Sunshine Village received approval from Parks Canada to construct a new high-speed quad chairlift for the 2015-2016 ski season to replace the existing Tee Pee Town double chair that was built in 1979. The new chair will have heated seats, footrests and orange bubbles for wind and weather protection and will be the first chairlift of its kind in Canada.

Passport

If you are going on a trip to Canada or Europe this year, make sure your passport is still valid.



Mountain High club's Season Overview

For a good overview of our club's varied activities, check out our web site [Photos](#) page. It contains photos from 22 past events.

All the photos will be moved a layer deeper, to our photo archives, and the current photos page will be cleared within the next few weeks to make room for the upcoming year's events.

Snowboarders Banned

The only 3 resorts that still ban snowboarding are: Alta (UT), Deer Valley (UT) and Mad River Glen (VT). Taos (NM) has opened its slopes to snowboarders since March 19, 2008.

New Chairlift at Whitefish, MT

Montana's Whitefish Mountain Resort is spending \$2.4 million on a fixed-grip triple chairlift on the north side of the mountain and will open up new intermediate runs and glades on 200 acres of terrain from the top of Flower Point, including some expert tree skiing.

Flower Point is so named for the wildflower-covered alpine meadow on its peak. It offers a spectacular view of the North Fork area in Glacier National Park. In tribute to this national treasure, most runs are named after locales in the national park: North Fork, Whiskey Spring, Big Creek, Inside Road, Outside Road, and Hidden Meadow. An additional run, Ridge Run, will run along the northeast boundary of the resort. The lift will also provide access to a sixth new run yet to be named on the south side of Flower Point. See video at: <http://youtu.be/rC6kxd-tNcc>

Flower Point ridge can also be accessed from the south side by the Bigfoot T-bar, which operates only on weekends. The new north-side chairlift will operate every day.



Flower Point ridge at Whitefish. New north facing glades are on the left.

The size of our newsletter has been getting too big. The October issue, with 20 pages, certainly was. So, we are trying something new here. Instead of printing complete articles here, we'll publish just a short summary, like a teaser. If you are interested, follow the link to the complete article, posted on our web site, usually on the ARTICLES page.

Accident aggravated by GoPro Camera



Formula 1 racer **Michael Schumacher** was skiing with his 14 year-old son and a small group of friends at Meribel in the French Alps on December 29, 2013, when he lost his balance and fell, slamming his head into a rock with such force that it split the helmet he was wearing.

Schumacher suffered critical brain injuries and was hospitalized in Grenoble, France. He was held in a medically-induced coma for six months. He is now slowly recovering.

The accident is still under investigation, but statements have been made that his GoPro camera, which was affixed to his helmet, might have aggravated the accident. Shares of GoPro have dropped by 10% after this news. Some speculate that the glue might have weakened the helmet, but it is more likely that it was simply the increased leverage that made the stress on the helmet higher.

Even though the helmet was shattered, the video in the camera was preserved and is being analyzed, frame by frame, by the investigators. You can see the video at: <http://youtu.be/MFWacoBSvbq>

See the complete article, with photos, in the ARTICLES / SAFETY section on our web site: <http://www.mthigh.org/Articles/GoPro-camera-aggravated-Michael-Schumacher-accident.pdf>

Searching for the Perfect Ski Watch



An updated version of the article that appeared in the October issue of **Lift Lines** is now posted in the ARTICLES / EQUIPMENT section on our web site: <http://www.mthigh.org/Articles/Ski-watches.htm>. The article has a two-fold purpose:

- To inform you about some of the best outdoors watches currently available.
- To point out that the perfect ski watch doesn't yet exist. You have to compromise between ruggedness and waterproofness versus ski features, such as counting the number of runs and accumulating your vertical skied. In fact, this is a plea for you to write to the watch manufacturers and urge them to give us the features we want.



Skiing North America: How Many Places Have You Skied?

If you have missed our series of articles on the efforts of John and Jewel Andrew to ski all the ski areas in North America (including all of Canada), you can now find it all in one place, a compilation of everything published on the subject and posted in the ARTICLES / TRAVEL section on our web site: <http://www.mthigh.org/Articles/Skiing-North-America.pdf>.

If you feel inspired by the idea, start counting the ski areas you have visited. They are all listed by State and/or Province, and sorted by size, and all you have to do is put a number "1" in a spreadsheet column you can label as yours. Find the spreadsheet on our web site at: <http://www.mthigh.org/Documents/North-American-Ski-Areas-2014-2-25.xlsx>

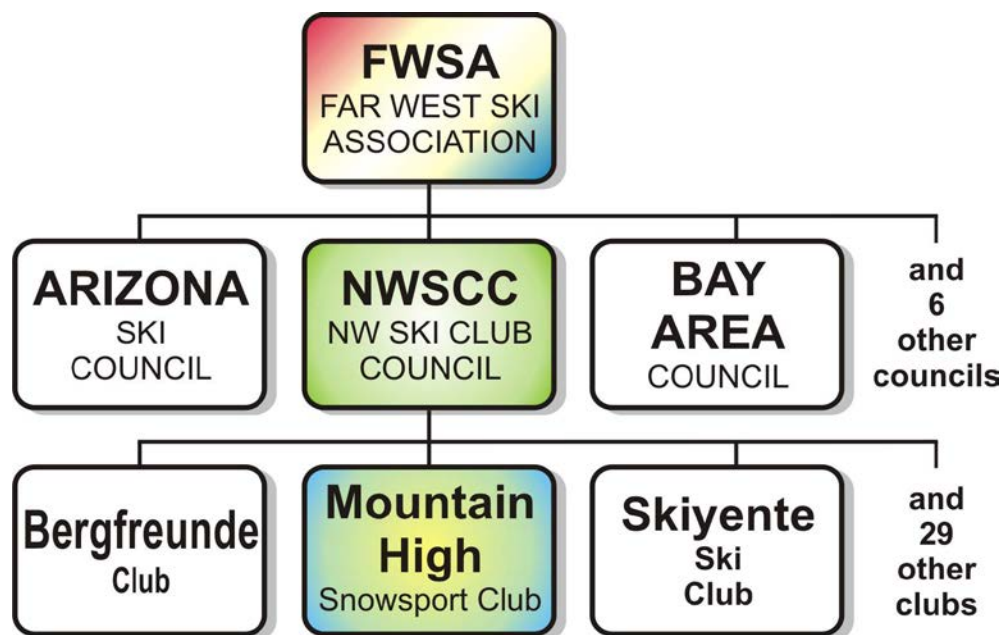
FWSA / NWSCC / Mt. HIGH

Our club is part of the Northwest Ski Club Council, which represents 32 ski clubs in the region. So, just remember that we are all part of the NWSCC.

The NWSCC in turn is part of the Far West Ski Association (FWSA), which represents a total of 9 ski councils in the western part of the United States.

Again, we are all part of the FWSA just by being Mountain High club members. Our membership cards say so too.

Whenever you hear of some event or some benefit available to NWSCC or FWSA members, that is all of us!



Newsletter options

The newsletter is distributed as a PDF file. We always post it on the web site, on the NEWSLETTER page. But, you have a choice in how you want to receive it in your email:

a) **The complete PDF file** emailed as an attachment. Chosen by **168** members.

b) **Just a link to the online copy** of the newsletter. Chosen by **95** members.

Contact Emilio to change this.

Facebook Page



We now have a **Facebook** page. Thanks to **Bruce Kuper** for setting it up.

This will be one more way for our members to communicate with each other, in addition to emails, our web site, Bulletin Board, and our two Forums (which are Google Groups).

Check out the Facebook page at: <https://www.facebook.com/groups/1528330064067232/>

Join this Facebook group and post your thoughts and your photos there!

Email Options

Did you know that our club offers 4 different options for email messages:

0. **No email..** Chosen by **7** members. Mainly because their spouses get all the email, and they don't need a separate copy.

1. **Newsletter only.** Chosen by **9** members who want just a single communication per month. But, a lot happens in between newsletters, and some of it never gets into the newsletter.

2. **Club only emails.** Chosen by **32** members. This option is for people who want to limit the number of emails from the club. The easiest way to draw a line is between club and non-club activities. Among non-club items would be the Powder Alliance, the NWSCC, FWSA, ski area news, ski movies, and more. It's all interesting stuff, but it's not directly related to our club.

3. **All emails** related to snow sports. Chosen by **228** members. Or more, because many of them are couples sharing the same email address. These people receive the newsletter as well as all other communications in between newsletters.

You can change your preference at any time. Just notify Emilio of your preference: Emilio2000@earthlink.net or 503-378-0171.

Is it OK to Share Your Email Address?

We ask this question on the Membership Signup form. The reason is that sometimes, after a trip or event, our members would like to communicate with other participants and they ask us for an address. We will only share it if you give us your consent.. And we will only share it with other club members and nobody else. You will not get any junk mail if you decide it's OK to share your email address with other club members. A club directory will never be published, because too many people already said NO to sharing their email address.

MOUNTAIN HIGH

Contacts / Club info

SNOWSPORT CLUB

2014 Man & Woman of the Year

Our club's Man and Woman of the Year for 2014, are:

Kurt Krueger, our club President for the past 3 years.

Nancy Pratt, our current club Treasurer.



Mountain High Meeting

Usually last Monday

Nov. 24 (Mon.): Open to all who want to get more involved with the club.

Gather at **6:00 pm**. Start at **6:30 pm**.

Location: Round Table Pizza, 10070 SW Barbur Blvd. (near Capitol Hwy.)

Mountain High snowsport club contacts:

President: Debbi Kor H: 503-314-7078,
Vice-President: Terry White H: 503-781-4558
Secretary: Lisa Scribner H: 360-904-1302,
Treasurer: Nancy Pratt H: 503-593-9427,
Past President: Kurt Krueger H: 503-625-1492,
Membership Director: Terry Swan H: 503-729-3435
Race Director: Bruce Kuper H: 503-975-8039,
Newsletter Editor: Emilio Trampuz H: 1-503-378-0171,
Social Activities: Debbi Kor H: 503-314-7078,
Golf: Cal Eddy H: 503-805-8606,
Hiking: Chris Brooks H: 503-764-5323,
Bike rides: Jackie Bonillo H: 503-663-3359,
Bike rides: Karen Michels H: 503-984-9210,
Mid-week skiing: Ken Brundidge H: 503-720-0620,
Trip Director: Linda McGavin H: 503-652-2840,
Trip Leader: Gordon Lusk H: 503-804-8363,
Trip Leader: Sandra Smith H: 503-646-4591,

President@mthigh.org
TWhite223@msn.com
LScribner98@yahoo.com
Treasurer@mthigh.org
President@mthigh.org
swans761@juno.com
bruku@comcast.net
newsletter@mthigh.org
ijustwannarun1@comcast.net
baebaw@ccgmail.net
jruffman@aol.com
jbon1960@comcast.net
michels7904@comcast.net
KenBrundidge@comcast.net
Trips@mthigh.org
GordyLusk@hotmail.com
sandra@pacifier.com

General info:
info@mthigh.org

Web site:
www.mthigh.org

DOUGH TRANSMITTAL FORM

Mail check payable to: Mountain High Snowsport Club, PO Box 2182, Portland, OR 97208.

PLEASE PRINT CLEARLY: ☐ New membership or ☐ Renewal

Name(s): _____ Birthday (MM/DD) _____

Address: _____

Phone (Hm): _____ Phone (Wk): _____

Email (Hm): _____ Email (Wk): _____

Email Preferences: - Newsletter (once a month): ☐ yes, link only ☐ yes, complete file ☐ no
☐ No changes - Club news & events (between newsletters): ☐ yes ☐ no
 (same as last year) - Other ski news (NWSCC, FWSA, ski areas, trips...): ☐ yes ☐ no
 - Is it OK to share your email address with other club members? ☐ Yes ☐ No

Please take my money, and apply it toward the following Ski Club fun stuff: **Deposit?** **Paid in full?**

- ☐ **Annual Membership** (Oct. 1, 2014 - Sept. 2015): Single (\$25); couple (\$40) \$ _____
- ☐ **PACRAT Racing (2015)** \$99 for the whole season. Team: _____ \$ _____
- ☐ **Whitefish trip** (Feb. 28- Mar. 6). Dep.: \$100. Adult: \$638; 65+=\$606; 70+=\$497 \$ _____
- ☐ **Whitefish train bed in sleeper car** \$235 round trip, per pers., double occy. \$ _____
- ☐ **Whitefish lift tickets** (on top of the included 3): \$44.10 per day (max. 2 days) \$ _____
- ☐ **Whitefish: Fernie day trip** (bus + lift ticket): \$105 per person \$ _____
- ☐ **Whitefish: Snowcat skiing** Fewer than 8: \$390; 8+ = \$375; 14 people = \$250 p.p. \$ _____
- ☐ **Crystal Mt. bus trip** (March 20-22): \$240; Seniors 70 and over = \$210; Dep.=\$100 \$ _____
- ☐ **Other:** _____ \$ _____

Comments (For whom you are paying. Roommate requests,...): _____

Signature(s): _____ Date: _____

Signature(s): _____ Date: _____

See our Trips cancellation policy on our web site: <http://www.mthigh.org/Documents/Trip-Cancellation-Policy.pdf>

Club membership = 298 Newsletter Distribution

The Nov. 2014 issue is posted on our web site. Also:
269 copies sent via email (as PDF files)
22 paper printed copies sent via US Mail.
 Copies are also sent to potential members, other clubs, etc.

Count Your Ski Areas

Set up your own counter of ski areas visited. Use a modified form of John and Jewel's spreadsheet with 3 added columns, for up to 3 more people. Make one of these your own. Enter a "1" for every ski area visited. See: <http://www.mthigh.org/Documents/North-American-Ski-Areas-2014-5-25.xls>

Mt. High**Membership**

It is best to renew your club membership in person at the **Ski Fair** or the **Kickoff party**. Both are in November. These are the only two events where we will be

prepared to take your membership forms and dues and can also give your your new membership card (which we don't normally mail out unless specifically requested).

But, of course, you can always renew by mail too. Simply print the **Membership Signup form** at the [FORMS & DOCS](#) page or on the **Membership** page, and mail it in.

If you are planning to join us on one of our trips, an early signup would be desirable, to secure your spot on the train or the bus. In that case, it's best to do it by mail as soon as possible.

Sno-Park Permits

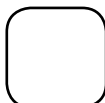
On Mt. Hood you can get a \$30 ticket for not having a sno-park permit.

The best place to buy a sno-park permit is at your local DMV

office. The annual permit costs **\$25**. A 3 day (consecutive) pass costs **\$9**, a day permit is **\$4**.

You can also buy it at various sporting good stores, and even at the Rhododendron food market, but all these outlets usually tack on **a \$5 fee** for a season permit, or **\$1** for a day pass. **Do some good and help the Ski Patrol by buying it from them at the Ski Fair.**

The sno-park permit fees help pay for snow removal from ski area parking lots during the winter.



Emilio Trampuz
 Mountain High Newsletter editor
 4742 Liberty Rd. S., #296
 Salem, OR 97302

Please check our web site,
www.mthigh.org
 for updates.