



Lift Lines

= No. 156, December 2013 =

Mountain High Snowsport Club, PO Box 2182, Portland, OR 97208



Here Comes the Snow!

Most of our major social events are now behind us, except for the **Christmas Ships Parade social** (Dec. 10), and our annual **Chocolate Party** (usually in February). It's now time to turn to the snow!

It's already past the deadline to sign up for **racing** this season, but as long as there are still open spots on teams, we'll find a way to squeeze you in. Just contact **Bruce Kuper** ASAP if you need assistance.

Our **trips** are filling up. The deadline to sign up for the Idaho trip is Dec. 27, and the deadline for the other trips is a month before each trip. Sign up with a \$100 deposit. We'll find you a roommate if you need one.

Read the 3rd part of the story about **John and Jewel Andrew** skiing all of North America, and get inspired to accomplish something similar, even if on a much smaller scale. Your potential challenges are:

- a) **The NWSCC Ski Challenge** to ski at least 7 ski areas (see page 9), or
 - b) **Visit all 12 Powder Alliance ski areas**, (see page 14), or
 - c) **Set a lifetime goal to ski all 156 western ski areas** listed on our Ski Areas page on the web site, or
 - d) **Get started on skiing all of North America**, or at least all of the United States. Don't wait till retirement. Do at least a few areas this year.
- Finally, let's try to park and ride to the mountain this winter. Let's take the **Mountain Express bus** from Sandy! See pages 7 and 9.

To Do List

1. Read **Skiing America** article (p.6).
2. Buy a **Sno-park permit**.
3. Sign up for **trips**. Just a \$100 deposit.
4. Join us at a **social event** (pages 3-4).
5. Sign up for **racing** - 5 races. (p. 5).
6. Get an **inclinometer** (page 7)
7. Take a run for **Brock** (page 4).

Note the color code.
Our club is blue.

2013 CALENDAR

Blue: Mountain High events
Red: NWSCC / FWSA / Multi-club
Black: General events

Nov. 30 (Sat.): Mt. High Wine Tour

Dec. 6-7 (Fri.-Sat.): Sandy Ski Swap

Dec. 7 (Sat.): Cascade Lodge Open House

Dec. 10 (Tue): Mt. High Christmas Ships Parade Social

Dec. 18 (Wed.): NWSCC meeting & PACRAT race bibs pickup

Dec. 30 (Mon.): Mt. High Board meeting

TRIPS / RACES

Jan. 5 (Sun.): NASTAR Open- Skibowl

Jan. 12 (Sun.): PACRAT 1 - Skibowl

Jan. 26 (Sun.): PACRAT 2 - Meadows

Jan. 25 - Feb. 1: FWSA Ski Week
Beaver Creek, CO

Jan. 27 - Feb. 1: Idaho bus trip
Schweitzer Mt., Lookout Pass, Silver Mt.

Feb. 9 (Sun.): PACRAT 3 - Skibowl

Feb. 22-27: FWSA Mini week Snowbasin

Feb. 21 - 23: Mt. Bachelor bus trip

Feb. 23 - Mar. 1: Lake Tahoe Sampler

Mar. 2 (Sun.): NASTAR Open- Skibowl

Mar. 6 - 15: FWSA Zermatt, Switzerland

Mar. 16 (Sun.): PACRAT 4 - Meadows

Mar. 21 - 23: Leavenworth bus trip
Mission Ridge, Stevens Pass

Mar. 30 (Sun.): PACRAT 5 - Timberline

Mt. High

Let's Have Some Fun



Christmas Ships social (Dec. 10)



Bib decorating with your team



Club Racing!



Club Trips



Ski Fair

November 18, 2013. (Monday) The annual NWSCC Ski Fair was held at the Convention Center adjacent to the Airport Holiday Inn on Columbia Blvd. This is an event organized by skiers for skiers, with each ski club having its own booth.

Thanks to **Jaxine Harris**, our booth was much better decorated than in previous years. The theme of the evening was "Convention Paradise", reflecting the theme of the next Far West Ski Association Convention to be held in Bend in June 2014, where the theme will be "Volcanic Paradise". So, Jaxine decorated our booth with a volcano, a Christmas tree, and lots of animals, with Bullcrinkle the moose (our club's mascot) a black bear, a beaver, a crow and a bluebird.

Among the helpers in our booth were **Kurt Krueger**, **Chuck Westergren**, **Terry Swan**, **Debbie Thomas** and **Emilio Trampuz**. On the NW Ski Club Council level, **Mary Olhausen**, **Linda McGavin** and **Debbi Kor** put the whole event together, including a Silent Auction.

Bruce Kuper and **Jan Siverts-Smith** were there too and also helped out, but they also had the PACRAT Racing booth to take care of as well. Lots of new people showed up, as well as existing club members who renewed their membership, signed up for trips, or racing, or both.

Kickoff Party

November 20, 2013 (Wednesday).

Approximately 125 people showed up. There were plenty of chairs and tables for everyone to get a seat. There was enough food for everyone. And everyone got a ticket for a drink. People renewed their membership, or joined the club for the first time. Lots of people signed up for ski trips, and for PACRAT racing.

Everyone who paid their membership dues received a membership card and a club business card (with a small inclinometer printed on the back). Also, 46 ski pole stickers with inclinometers were sold.

Several people made announcements. Bruce Kuper showed a video presentation of PACRAT racing.



See more photos at www.mthigh.org/Photos.htm.

MOUNTAIN HIGH

Upcoming events

SNOWSPORT CLUB

Mt. High

Wine Tour



Nov. 30, 2013. (Sat.) 10:30 am - 5:00 pm.

This is the 13th anniversary of our popular wine tour on Thanksgiving Saturday.

Meet at Tigard Fred Meyer. Bring some munchies to share, and we'll tailgate somewhere along the line. There are lots of new wineries to check out!

We'll rent a 12 passenger van for the day. The cost will be \$10 p/p. If we don't get 12 to sign up by Nov. 26, we will just carpool, which will cut out this \$10 fee.

Most wineries charge around \$10 to taste, but if a purchase is made, the tasting fee is waived.

Join us for a day of tasting, food, music and fun. This group can guarantee you a good time!

Contact Debbi Kor: ijustwannarun1@comcast.net to RSVP.

Sandy Ski Swap + Warren Miller movie

Dec. 6 and 7. (Friday and Saturday)

Ski and Snowsports Swap & Sale. Come and do some shopping before the movie and during the 30 minute intermission. There will be lots of new and used ski and snowsports equipment with great prices!

Preview some examples of swap items here. It's a great way to pick up clothing and gear for the upcoming season! Swap & Sale Hours: Friday 12/6 Early Bird Sale 6pm-9pm, Saturday 12/7 Regular Sale 9am-7pm. If you'd like to consign your used items for this event, please **enter your swap items here.**

WARREN MILLER movie tickets are now available! Use the school's secure system to buy tickets from Sandy Ski Team Racers & Freestylers. Show times: 6pm December 6th & 7th. Tickets \$20 (a limited number available at the door).

Location: New Sandy High School Auditorium

Dinner at the Cascade Lodge



December 7 (Saturday) 6:00 pm

The **Cascade Ski Club and Lodge** in Government Camp is holding its annual open house and **we have all been invited to come.** Come check out the lodge, its wonderful living room space, its kitchen and plentiful bunk beds.

As a member of an NWSCC ski club, you can get a bunk bed for just \$22 per night. Or only \$15 per night if you join the Cascade Ski Club.

Free dinner will be offered, including Roasted tri-tip beef, salmon, roasted vegetables, garlic mashed potatoes, garlic bread, spring mix salad, and dessert!

Spend the day skiing on the mountain, and then wrap it up with a visit to the Cascade Lodge in the heart of Government Camp.

See the club's web site: www.cascadeskiclub.org

Mt. High Christmas Ships Parade



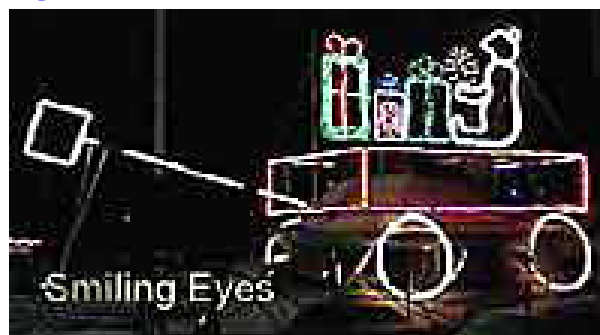
December 10, 2013
(Tuesday) - 6:00 pm

We'll gather at **Joe's Crab Shack**, on the Columbia River (just across the Interstate Bridge, on the Vancouver side) to watch the Christmas Ships.

Location: Joe's Crab Shack,
101 Columbia Way
Vancouver WA 98661.
Phone: 360-693-9211.

We'll have some tables staked out, beginning around 6:00 p.m. The ships are due to arrive around 7:30, so come for drinks, stay for dinner and enjoy the evening with your fellow Mt. Highers.

Contact: **Debbi Kor**, 503-314-7078, ijustwannarun1@comcast.net



NWSCC

NWSCC Meeting + PACRAT Bib Pickup



By being a Mt. High member, you are also automatically a member of the NWSCC.

The NW Ski Club Council holds meetings on the 3rd Wednesday approximately every other month. These meetings are open to everyone. The next meeting will be a combined NWSCC and PACRAT meeting.

December 18 (Wed.) 6 pm.

At Tubby's Deli, 3330 N.W. Yeon Avenue, Portland.

**Topics include:**

PACRAT racing bib pickup - Team captains be there!

PIE Auction,

Safety,

Learn to Ski month, ... etc..

For more information, see the NWSCC web site at: <http://www.nwskiers.org/>

See the monthly NWSCC Newsletter at:

www.nwskiers.org/Newsletter/Newsletter.htm

Remembering Brock Hannibal



Passed away: Nov. 20, 2013.

Memorial Service: Dec. 6, 2013.

Many of us remember Brock Hannibal as:

- a) **A PACRAT racer**, team captain of the "Ragnar's Rangers".
- b) **An avid skier** who joined us on some of the Lake Tahoe trips organized by Janice Jessen a few years ago.
- c) **An active participant in "Hope on the Slopes"** at Mt. Hood Skibowl, a fund-raiser for the American Cancer Society.
- d) **A swell guy** who loved to socialize, to dance, fish, and ski.

He worked for Tektronix, was a Mountain High member, but even more active in the Cascade Ski Club.

Sadly, Brock passed away on November 20th, after a battle with cancer. His son Quinn Hannibal wrote on his dad's Facebook page:

"My father passed away last night at approximately 5:30 pm. He went as peacefully and painlessly as possible. And is in a better place now, wherever he decided to go be it skiing or dancing or to some of the greatest Ducks games ever played; I know he's having a good time in his new found freedom. We are having him cremated and will be holding a small memorial service."

Brock Hannibal's Memorial Service: Saturday, December 7 at 2:00 pm, at the Unity of Beaverton Church in Beaverton. Quinn says: "Family and close friends are invited to my father's memorial service (the church holds about 150 people). We will be showing some photos, sharing some words, and celebrating his life."

Details at: <https://www.facebook.com/events/619516741444823/>

PACRAT News

Pacific NW Area Clubs Recreational Alpine Teams



Bruce Kuper
Mt. High Racing Director

Team captains, please let Bruce know the status of your team. Do you need more racers? If your team is complete, send your paperwork to Bruce.

If anyone needs assistance getting placed on a specific team, contact Bruce Kuper at: bruku@comcast.net or phone: 503-975-8039.

For more info on racing this

winter please check out www.mthigh.org/Racing.htm.

2013/2014 PACRAT Race Dates

Date	Location
January 5	NASTAR Open race Mt. Hood Skibowl
January 12	Mt. Hood Skibowl
January 26	Mt. Hood Meadows
February 9	Mt. Hood Skibowl
March 2	NASTAR Open race Mt. Hood Skibowl
March 16	Mt. Hood Meadows
March 30	Timberline
April 6	Make up Timberline only if a race is canceled
April 4-6	FWRA Championships, Mammoth Mt.
Apr. 18 (Fri.)	Rat Attack Awards Party (tentative)

Mt. High Team captains

Team name	Team captain	Email address / Phone #
Avalanche Express	Gary Gunderson	ktgpdx@frontier.com
Blizzardors	Linda Eidemiller	2lindaloo@gmail.com
Chilled Brewskis	Brenda Becerra	LetsPlayOnTheMt@hotmail.com
Frosted Flakes	Stevie Viaene	stevie.viaene@gmail.com
Infra-Rats	Bruce Ellison	yuffiet@comcast.net
Lab Rats	Lonny Schiller	jandjkarsten@msn.com
Mixed Nuts	Samy Fouts	samyfouts@comcast.net
Mt. Hoodlums	Phil Mant	phil6666@aol.com
Psychothermia	Chris Coleman	christopherdcoleman@hotmail.com
Rat Racers	Eric Ort	eort@mail.com
Rattitudes	Chris Wiley	Chris2007@Yhuji.com
Schussing Shysters	McCoy Smith	McCoySmith@comcast.net
Slack Rats	Beth Paraskeva	alnbeth@gmail.com
Vertical Junkies	Bob Lawrence	BobL_Vjunkies@nwretractablescreens.com
Vertigo Madness	Tom Cansler	tomcansler@qualitytank.com

NASTAR Races open to all

Jan. 5 and Mar. 2 Both of these NASTAR races at Mt. Hood Skibowl are open to all. Just show up. Bring \$10 for 2 runs, or \$20 for unlimited number of runs. Registration in the Outback Lodge 8 - 9 am.

Bib pickup

Dec. 18 (Wed.) 6:00 pm. Team captains need to pickup their team's bibs on this day at Tubby's Deli, 3330 N.W. Yeon Avenue, Portland. See page 4.

You Are Invited! - Colleen Hankins

PACRAT



Wants YOU!

For Fun & Camaraderie!

For nearly 30 years PACRAT Racing (Pacific Northwest Area Clubs Recreational Alpine Teams) has offered adult ski club members an exciting and fun opportunity to participate in recreational alpine racing on Mt. Hood. While some PACRATers have raced for years, many of our members have joined PACRAT as beginner and intermediate skiers and snowboarders.

If you are looking for team camaraderie and friendly fun competition - we are the league for you!. Many racers join primarily for the social aspect and throw in some racing! Each PACRAT team consists of 10 racers and

each racer is handicapped after the first race and placed into one of 7 skill levels ranging from novice to elite based on individual time. All racers are also dual-scored under the NASTAR scoring system, so you can see how you compare on the NATIONAL level too! All racers who qualify may attend the NASTAR National Championships. To join a team, the only requirements are to be 18, a member of a NWSCC club, and to pay race fees of \$95 for the season. Dues include your bib, 5 races, discounted race day lift tickets, après ski parties with door prizes and refreshments, pins for placement in your categories, NASTAR standings and pins, and an end-of-season "Rat Attack" Awards Party. This is the best "bang for your buck" entertainment value on the mountain!!! Check us out at www.PACRATs.org for race dates and sign-up instructions.

Ski ya on the mountain!!!

Colleen Hankins

Director of PACRAT Membership, 2013/2014

Skiing North America with John & Jewel Andrew



Part 3 - by Emilio Trampuz



Some of us like the variety of terrain and scenery that can only be experienced by visiting different ski areas. The only problem is: not enough time to travel! But, as many of us approach retirement, time will not be an issue any more. And what better way to spend our retirement years than skiing all of North America! That's what **John and Jewel Andrew** decided to do when they retired about 17 years ago. In those 17 years, their count of places skied has gone from just 25 to 519. Earlier, we erroneously reported 517, because we forgot to add the 2 ski areas visited most recently. Their total is now 519.

What is a ski area?

How should we define what a ski resort is? John, says: "Any place with a fixed lift device that is willing to sell a ticket." Anything from a golf course to a mega-resort.

"North American ski areas come in all sizes. The tallest is **Revelstoke** in central British Columbia with 5,620 vertical feet. Shortest is the **Sawkill Family Ski Center** near Kingston, NY with 70 vertical feet. Mean average vertical in North America is 948.4 vertical. Resorts near the mean average include **Dartmouth Skiway** in New Hampshire with 968, **Clearwater B. C.** with 950, and **Kelly Canyon** in Idaho with 938. The median resort in North America is **New Winterplace** in West Virginia with 603 feet of vertical. Median is at the middle of the pack. This told Jewel and I that we would find 350 resorts with more than 603 feet and 350 resorts with less. With such a huge difference between resorts, we obviously had to allocate our skiing time in some sensible way. That's when we developed our rule of thumb: **one day per 1000 feet.**"

"As a rule of thumb, we try to spend one day of skiing per 1,000 feet of vertical. We allocate three days to ski a western

resort with 3,000 feet of vertical, such as **Mammoth** in California. We allocate two ski days at eastern operations with 2,000+ feet, such as **Stowe** in Vermont. Resorts advertising 1,000 feet get one day on our schedule. Ski hills with 500 feet can be done two per day. Gravel pits, garbage dumps, and golf courses take about 30 minutes. We might do up to 3 of those in a day if they are clustered near big cities and offer night skiing."

"Big resorts are easy to ski on a schedule. They are reliably open, and all signs point to them. Smaller part-time and weekend ski areas sprinkled across vast distances bounded by Alaska, Yukon, Manitoba, Quebec, Labrador, Newfoundland, New York, Alabama, Arizona, and California, are the ones that complicate our quest. Because of this, we allocated 25 retirement years and about 1,000 days of skiing to accomplish our goal. As of the summer of 2013, we are about two thirds complete."

"Jewel and I are not trying to better anyone's record, or set a record. We are doing this purely for our own challenge and satisfaction. Besides, there are no rules and no referee and no scorekeepers. If someone tells me they've skied 700 ski areas in North America, I'd say, "Wonderful."

It's a challenge to keep track of all the ski areas over many years, since some ski areas change names.

"**Wolf Mountain** (near Eden, Utah) was called **Nordic Valley** when I skied it about 14 years ago. Twenty years ago Utah had a different **Wolf Mountain** ski area next door to **Park City** and **Deer Valley**. I was looking forward to skiing at the former **Wolf Mountain** because their logo was a really neat silhouette of a howling wolf's head on patches and pins. By the time I skied there, the name had changed to **The Canyons.**"

There are a few tiny ski hills not yet added to the list, spread out across the vast plains of Alberta and Colorado. John wants to check them out before adding them.

A challenge for all

You too can embark on a similar adventure. Start with a more modest goal, such as the [Northwest Ski Challenge](#) to ski at least 7 Northwest ski areas in a single winter season.

Or, how about visiting all 12 ski areas that are part of the Powder Alliance? See: www.powderalliance.com

For a more ambitious lifetime goal, try to ski the 156 western ski areas listed at: www.mthigh.org/SkiAreas.htm.

Use a modified form of John and Jewel's spreadsheet with 3 added columns. One shows that Emilio has skied 99 ski areas. The other two columns are for Persons A and B. Make those your own and start entering a "1" for every ski area visited. See: www.mthigh.org/Documents/North-American-Ski-Areas-2013-09-15.xls



John & Jewel
at Sky Valley
Georgia

How Steep is this Slope?



An **inclinometer** is a device that measures the angle of inclination – in this case the steepness of a slope.

A very simple inclinometer is printed on a sticker and wrapped around a ski pole.

A measurement is taken by eyeballing the side of the slope against the lines on the inclinometer.

The yellow highlighted area indicates the zone where most avalanches occur, on slopes between 30 - 45 degrees.

We distributed these inclinometer stickers at the Ski Fair and the Kickoff Party. We asked people to contribute 50 cents to cover the costs of printing.

We'll probably have them on hand on our ski trips. To order one by mail, please send 50 cents plus self addressed stamped envelope to Emilio Trampuz, 4742 Liberty Rd. S., #296, Salem, OR 97302.

New bus service to Mt. Hood



A new Mountain Express bus service will operate six to eight runs a day, year-round except for Thanksgiving and Christmas, between **Sandy** and

Mount Hood, stopping at Skibowl, Government Camp, and Timberline. Fare is \$2 one way, or a book of 20 rides brings the price down to \$1.50. That's less than you'd spend on gas!

The service has already started, as of October 1, 2013. Three additional trips will be added during the winter season, December 1 - March 31. The best time for us is:

1. Leave Forest Service Park & Ride at 7:45 am, arrive at Skibowl West at 8:32 am, arrive at Timberline at 9:00 am.
2. Depart from Timberline at 2:45 pm or 4:45 pm, arrive in Sandy at 3:58 or 5:58 pm.

See the schedule on the Clackamas County Mountain Express website, www.clackamas.us/socialservices/documents/MTX%20schedule%2010-2013.pdf

Mt. Hood News web site: ShredHood.org



ShredHood.org is a new web site devoted to everything related to Snow and Mt. Hood. It contains the latest news, classifieds, racing, new school, old school, videos, slides, events, and other resources.

The web site was started by **Ben Jacklet**, a local journalist. Check it out: <http://shredhood.org/>

A link to this site has been added on our web site's Useful Links page, See <http://www.mthigh.org/Links.htm>

Whistler Cabin Trip

Jan. 19-25, 2014. This annual trip to a cabin just 5 minutes from Whistler village attracts people from several local ski clubs and it usually fills up quickly, because it can only accommodate about a dozen people. There have been some cancellation and some more signups. There might be room for one or two more people. It's \$290 a person. Includes lodging for a week. Lift tickets not included. Contact **Bill Leeper**, wcleeper@hotmail.com

Mt. Bachelor terrain expansion

Mt. Bachelor is opening new terrain on the far east side of the mountain. Mainly intermediate trails. This year, skiing there may require a hike out at the bottom, but by next winter, 2014-15, a new **Eastside Express** detachable quad lift will be installed approximately 3,100 feet east of the existing Rainbow chair.

Sometime after the Summit chairlift opens this season, Bachelor will open 80 new acres south of the east catch line, according to mountain manager Tom Lomax. The catch line will feed skiers and snowboarders back to the Rainbow chairlift.

Later this winter, the resort plans to open more terrain below that catch line that will require a hike back to Rainbow along a groomed track. Snowriders entering that terrain will encounter informational signs explaining that they must hike back to the lifts.

"It'll be gated terrain, and it will be open in select situations. And I don't expect it to open the first day after a storm cycle on Summit. We'll get Summit open,

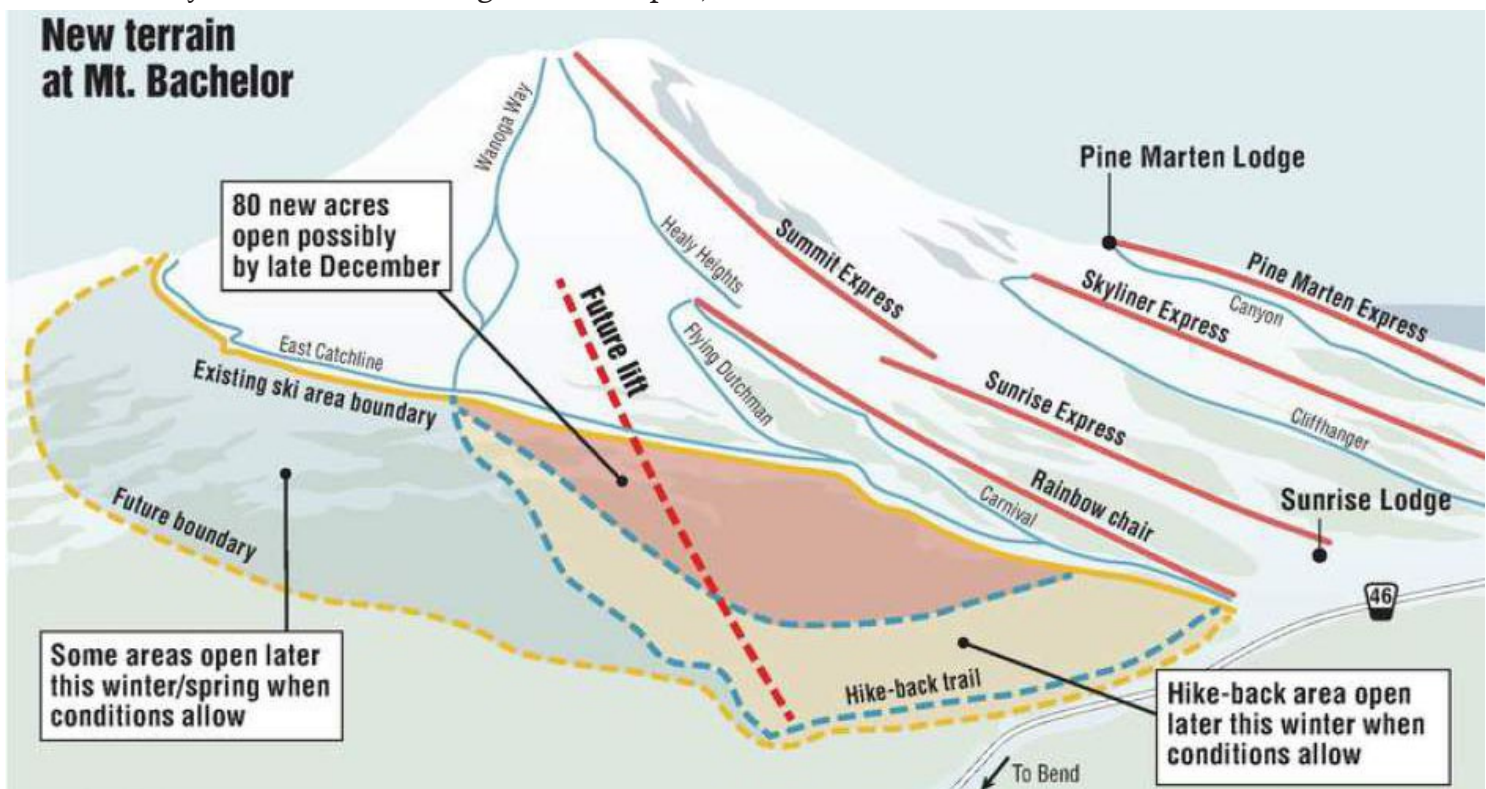


Eastside terrain

and then maybe it's two or three days later when we can open those gates for that hike-back terrain."

The 80 new acres will not be groomed, but rather off-piste tree skiing that requires the appropriate safety measures, such as not skiing alone, having a charged cellphone, somebody knowing you're out there, and being wary of tree wells.

The new 80 to 150 acres could open sometime in late December, according to Lomax. That acreage is part of an additional 620 skiable acres that will be added to Bachelor once the new east-side chairlift is constructed.



Mt. Bachelor offers lift ticket deal to ski clubs

Mt. Bachelor is again offering a NWSCC Club Deal for all Mt. High and NWSCC Club members! Lift tickets just **\$52** when you show your club membership card. This is only for the 2013-14 season. Tickets must be purchased before 4 pm **December 20th 2013** by calling 1-800-829-2442 and asking for the **NWSCC Club Deal**.

Your NWSCC/Mt. High membership card & photo ID will be necessary to pick up your tickets at Mt. Bachelor ticket window. Black out dates are Dec 26-31 Jan 1-4, Jan 18-19 and Feb 15-16. Tickets are non refundable and non transferable. One lift ticket can be redeemed per day.

Make the Most of your Membership

The more you participate, the more you will get out of your club membership. So, come to the parties, sign up for ski trips, join a PACRAT race team, meet us on the slopes!

Sign up for a trip

We have approximately one trip per month, and a couple of them are just weekend bus trips. Loads of fun! All the trips are filling up nicely. Don't be left out. Sign up now! See pages 10-12.

Join us on Mt. Hood

We've been inviting people to meet up in Sandy and carpool from there. This year, let's try to use the new Mountain Express bus service, which will take you from Sandy to Skibowl, Government Camp and/or Timberline for just \$2. See more on page 7. Meet the bus at the Forest Service Park & Ride, Sandy City Transit, 16610 Champion Way, Sandy, OR 97055.

That's a left turn off of Highway 26 just before you enter Sandy (on the far west of Sandy). Bus leaves at 7:45 am.

If you miss us there, try to connect with us on the Mountain using 2-way radios on channel 6-19.

Try racing

10-person teams are being formed right now! If you want to race and haven't signed up yet, send in your racing fee using the Dough Transmittal form, and contact **Bruce Kuper** so he can find you a spot on a team.

Mid-week skiing/riding

These are regular club members, just like you and me, who like to ski during the less crowded weekdays, especially when there is fresh powder on the slopes.

The group was started by **Harry & Lisa Scribner**. Then **George Yun** took it over, and right now the man in charge is **Ken Brundige**, KenBrundige@comcast.net

Email him to get on his email list, so he can notify you when the next mid-week outing will occur, ... usually when there is a fresh dump of snow on Mt. Hood. Or simply join the **mid-week Forum** and you will then receive an email when someone posts something there.

Ski Challenge -- ongoing!

The NW Ski Club Council has been rewarding skiers and snowboarders who visit lots of Northwest ski areas. One or more lucky winners each year have a chance to win a prize.

The list of qualifying ski areas has expanded to Alaska, Hawaii, British Columbia (Big White, Red Mountain, and Whitewater) and Mammoth Mt., California. Only the ski areas shown on the map qualify, and that includes all of Oregon, Washington and Idaho.

Ski or ride any 7 or more resorts shown on the map during the 2013-2014 ski season to be eligible to win a prize. The more ski areas you visit, the greater your chance of winning. Just save your lift tickets or receipts, and qualify a prize! The winners of the drawing will be announced in the Fall of 2014.

To qualify for a prize, submit your lift tickets (or receipts) to: **NWSCC**, 5331 SW Macadam Avenue, Suite 258, Box 438, Portland, OR 97239.

More info on our Council's web site: www.nwskiers.org. Also, see the **Articles** page on the Mt. High web site for several articles documenting some of the previous Ski Challenges.



TRIPS

Here are the ski trips planned for this season. Also, see more details on our web site, on the TRIPS page.

Note that all 3 Mt. High trips will be **bus** trips. Notice the bus symbol on the right side of the trip headline.

When planning your trip(s), remember the Fusion Pass/Powder Alliance deal can save you \$180 on the Idaho trip, and \$50 on the Leavenworth trip.

Mt. High Idaho Panhandle bus trip



Jan. 27 - Feb. 1, 2014.

6 days/ 5 nights / 5 days skiing.

We'll ski and stay at **Schweitzer Mt.** for 3 days and nights to make use of the 3 free lift tickets with the Fusion Pass/ Powder Alliance deal. It's OK if you don't have the Fusion Pass; you'll just have to pay a bit more.

Schweitzer Mt. is one of the few places in the US offering true ski-in/ski-out, and great powder. Schweitzer Mt. is known for its powder, glade skiing, long cruisers, snow ghosts and fantastic views of Lake Pend Oreille.

Also, you can learn about the legend of Phineas Schweitzer, hear his ghost, and see some of his inventions, such as the 6-pack chairlift and the fog-o-meter!

Then we'll move to Kellogg, Idaho, where we will stay for 2 nights near the bottom of the gondola to **Silver Mt.**

On the first day there, we'll have our bus take us about 25 minutes east to **Lookout Pass** ski area on the Montana border. This is Idaho's number 1 powder place. It gets significantly more snow than Schweitzer Mt.

At Lookout Pass, you can ski the Idaho side, the Montana side, and the North side. At lunch, notice that the day lodge is built right on the State line, and you can have lunch in the Montana dining room or in the Idaho dining room.



On the last day of the trip, we will ski at Silver Mountain, just a gondola ride above our lodgings. Silver Mt. has opened two new trails recently. Last winter, they opened the "Bootlegger" trail. This year, a new trail has been added named "Shady Lady" and the challenge will be to find where it is.

We'll have to stop skiing shortly after lunch ... or maybe you can skip lunch and keep on skiing. We need to leave early because we'll have a long drive home.

Our bus will leave Kellogg around 2 pm, and we should be back in Portland some time shortly after 9 pm on Saturday night. Then you'll have all of Sunday to rest and recover from the trip.

The price covers lodging, skiing, and bus transportation, as well as at least one dinner.

Regular = **\$875.** Senior (65+) = **\$835.**

If you have a Fusion Pass, you can save a lot on this trip thanks to the Powder Alliance deal.

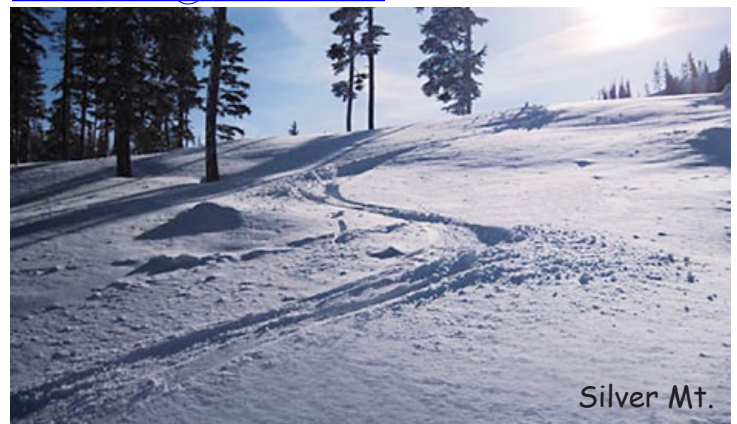
Regular with Fusion pass = **\$695.**

Senior with Fusion pass = **\$675.**

These Fusion Pass prices also apply if you have purchased a Ski3 pack of tickets directly from Schweitzer.

Use our [Dough Transmittal Form](#) for all payments. Pay in full by December 27. No refunds after that.

Details on our web site. Contact: **Emilio**, 503-378-0171, Emilio2000@earthlink.net



MOUNTAIN HIGH**Mt. High Trips****SNOWSPORT CLUB****Mt. High****Mt. Bachelor bus trip****Feb. 21 - 23, 2014.**

2 nights / 2 days skiing.

We'll be leaving Friday evening around 5:30 pm or so, and will return to Portland Sunday evening.

If the weather is good, you can ski all 360 degrees around the mountain. Lots of terrain to explore, including powder, glades, open meadows, and more.

Lodging at the Bend Riverside Inn & Suites.

Price: Adults: \$250, or \$135 without lift tickets.

Seniors 65-69 : \$230

Super-seniors 70+ : \$205

Deposit: \$100. Full payment due by January 20. Please use our [Dough Transmittal Form](#) for all payments.

Make check payable to Mountain High and mail it to the PO Box address at the top of the form.

More on our web site. Contact: **Debbi Kor**, 503-314-7078, ijustwannarun1@comcast.net



Leeway trail on Mt. Bachelor

Mt. High**Leavenworth bus trip**

Bomber wing at Mission Ridge

March 21 - 23, 2014. Bus trip. We'll leave Portland on Friday at 4 pm and return Sunday by about 9:30 pm.

2 nights / 2 days skiing at:

1. **Mission Ridge.** 2,250' vertical. 1 Express Quad, 3 Doubles. You can ski by a World War II bomber that crashed there.

2. **Stevens Pass**, lots of tree skiing, front and back + lots of cruisers! 1,800' vertical on 3 sides of 2 different mountains, served by 3 Quads, 4 Triples, 3 Doubles.

Lodging: Obertal Inn, right in the middle of Leavenworth. Rooms with fireplace or jacuzzi available.

Dinner: Saturday night, included in the trip price, we'll have dinner at King Ludwig's restaurant, with live polka music!

Price: Adult \$299 or \$250 (if you have Fusion Pass)

Super-seniors (70+): \$250

For room with fireplace: add \$23 pp.

For just 4 instead of 5 in townhome: add \$30pp

The price covers lodging, skiing, and bus transportation, as well as one dinner. But there are many variables on this trip, so please see more details on our web site.

Use our [Dough Transmittal Form](#) for all payments. Full payment due by February 20. No refunds after Feb. 20 unless you can fill your spot. Please specify if you want one of the special rooms.

NOTE: Only 38 spots available at the standard rate. After those 38 spots get filled, you'll only be able to sign up for the more expensive options

Contact: Trip leader Linda McGavin, 503-652-2840, Trips@mthigh.org



Wally at Stevens Pass

MOUNTAIN HIGH**Multi-club Trips****SNOWSPORT CLUB****FWSA Ski Week: Beaver Creek, CO**

Jan. 25 - Feb. 1, 2014. This is an annual week of skiing, bringing together ski clubs from all over the West. Only the location is different each year. See details at:

<http://www.fwsa.org/Travel/NAski/2014-FWSA-BeaverCreek/2014-FWSA-BeaverCreek.html>

Included: 7 nights lodging, Mountain Rally, Welcome Party, Races, Pub Crawl, Mountain Picnic, Banquet, Awards Après Party, Transportation to FWSA Events, 5 or 6 Day Lift Ticket good at 5 Colorado Resorts: Beaver Creek, Vail, Breckenridge, Keystone, Arapahoe Basin.

Not included: Air or airport ground transportation.

Contact: Christine Ciardi, c2blondie@hotmail.com 503-819-3128. **Base price** = \$1,229.

FWSA Mini Ski Week: Snowbasin, UT

Feb. 22 - 27, 2014.

5 nights / 3 or 4 days. Lodging is at La Quinta Inn in Layton, Utah, about 25 minutes from the Snowbasin ski area.

Price = \$425 - \$475. **Included:** 5 nights lodging, welcome and farewell parties, pub crawl, 3 or 4 days at Snowbasin, and shuttle bus from Layton to Snowbasin.

Not included: Air or transportation from airport.

Trip Leader: Gloria Raminha, 661-829-5996 [H], 661-800-8229 [C], garski2011@gmail.com.

Details: <http://www.fwsa.org/Travel/NAski/2014-FWSA-Snowbasin/2014-FWSA-Snowbasin.html>

International Ski Week: Zermatt, Switzerland

March 6 - 15, 2014.

Price = \$1,908 - \$2,908.

Included: 7 nights lodging in a choice of 3 hotels, welcome and farewell parties, breakfast & dinner daily,

airport ground transfers, tour escort, 2 apres ski parties.

Air-fare: Additional \$1,109 + \$526 fuel surcharge + \$126 in departure taxes. Both fees might change.

Not included: Lift tickets, optional day tours, optional post-trip extensions to Barcelona and Madrid, Spain.

Trip Leader: Debbie Stewart, VP International Travel, 430 S. Church St., Visalia, CA 93277, 559-734-9294 [B] 559-737-0882 [C], vpinternationaltravel@fwsa.org

Bergfreunde**Tahoe Sampler**

Feb. 23 - Mar. 1, 2014. Mt. High members are invited to join this flexible carpooling trip.

Cost: \$332 (pp/do, land only). \$150 down, balance by Jan. 1. (Single room: add \$176.20.) No guests - you must be a member of ANY ski club.

Included:

- 6 nights lodging,
- Hospitality room on Sun, Mon, Fri.,
- 2 Group dinners.
- Dinner dance cruise on Tahoe Queen paddle wheeler
- A trip souvenir.

Lodging: at the Bluelake Inn, within a few blocks of the casinos and the Heavenly gondola. Each room has a refrigerator and microwave.

Skiing: We'll be taking advantage of any lift ticket deals that are offered by the 16 different ski areas. Last year, we skied 5 areas for about \$200. This year, Sierra-at-Tahoe is part of the Powder Alliance (see page 14).

Note that this is also a cross-country and snowshoe trip.

Contact: Bob Burns: 503-524-5261 (phone/fax), bob@inkjetman.com.

Make checks payable to **Bergfreunde Ski Club**.

Send payments to: Bob Burns, 9980 SW Citation Place, Beaverton, OR 97008. Include: Your name; club name; address; phone numbers; and email address.

Details: www.mthigh.org/Trips.htm#Tahoe_Sampler

FWRA Championships

April 4-6, 2014. Annual inter-club competition. This year, it will be held at Mammoth Mt., CA.

Slalom on one day and Giant Slalom on the other.

This is a great opportunity to experience what a real Slalom course feels like! All our PACRAT racers are automatically qualified to enter this competition.

Details have not been announced yet, but they should probably be published soon on the Far West Racing Association web site, <http://fwra.com/>

Contact: Bob Ellis, rellis9681@aol.com

MOUNTAIN HIGH**Contacts / Club info****SNOWSPORT CLUB****Man & Woman of the Year**

Our club's Man and Woman of the Year, are:

Bruce Kuper, who is also our new Racing Director, and

Chris Brooks, our former club Secretary, and also our ongoing hikes leader.



Bruce Kuper



Chris Brooks

Mountain High Meeting

Usually the last Monday.

Dec. 30 (Mon.): Open to all who want to get more involved with the club. Gather at **6:00 pm**. Start at **6:30 pm**.

Location: Round Table Pizza, 10070 SW Barbur Blvd. (near Capitol Hwy.)

Mountain High snowsport club contacts:

President: Kurt Krueger H: 503-625-1492,
Vice-President: Terry White H: 503-781-4558
Secretary: Lisa Scribner H: 360-904-1302,
Treasurer: Nancy Pratt H: 503-593-9427,
Membership Director: Terry Swan H: 503-729-3435
Race Director: Bruce Kuper H: 503-975-8039,
Newsletter Editor: Emilio Trampuz H: 1-503-378-0171,
Social Activities: Debbi Kor H: 503-314-7078,
Golf: Cal Eddy H: 503-805-8606,
Hiking: Chris Brooks H: 503-764-5323,
Mid-week skiing: Ken Brundidge H: 503-720-0620,
Trip Director: Linda McGavin H: 503-652-2840,
Trip Leader: Gordon Lusk H: 503-804-8363,

President@mthigh.org
TWhite223@msn.com
LScribner98@yahoo.com
Treasurer@mthigh.org
swans761@juno.com
bruku@comcast.net
newsletter@mthigh.org
ijustwannarun1@comcast.net
baebaw@ccgmail.net
jruffman@aol.com
KenBrundidge@comcast.net
Trips@mthigh.org
GordyLusk@hotmail.com

General info:
info@mthigh.org
 Web site:
www.mthigh.org

DOUGH TRANSMITTAL FORM

Mail check payable to: Mountain High Snowsport Club, PO Box 2182, Portland, OR 97208.

PLEASE PRINT CLEARLY: ☐ New membership ☐ Renewal

Name(s): _____

Address: _____

Phone (Hm): _____ Phone (Wk): _____

Email (Hm): _____ Email (Wk): _____

By joining the Mountain High Snowsport Club, I acknowledge that I am responsible for my own safety and conduct. I hereby agree to be bound by all Mountain High Snowsport Club bylaws and regulations, including the Trip Cancellation Policy. I hereby release Mountain High Snowsport Club, and any of their agents (officers, directors, trip captains, and any other Club representatives) from liability for personal injury, property damage, or any other liability of any kind connected with my participation in any club-related activity. Furthermore, I agree to indemnify and hold the Club and any of their agents harmless from any and all liabilities of any kind which may be incurred or asserted against the Club or any of their agents in any way relating to my negligence or willful misconduct connected with my participation in the club's activities.

Email Preferences: - Newsletter (once a month): ☐ yes, link only ☐ yes, complete file ☐ no
☐ No changes - Club news & events (between newsletters): ☐ yes ☐ no
 (same as last year) - Other ski news (NWSCC, FWSA, ski areas, trips...): ☐ yes ☐ no
 - Is it OK to share your email address with other club members? ☐ Yes ☐ No

Please take my money, and apply it toward the following Ski Club fun stuff:

	Deposit?	Paid in full?
<input type="checkbox"/> Annual Membership (Oct. 1, 2012 - Sept. 2013): Single (\$25); couple (\$40)	\$ _____	_____
<input type="checkbox"/> PACRAT Racing (2014) \$95 for the whole season . Team: _____	\$ _____	_____
<input type="checkbox"/> Idaho trip (Jan. 27-Feb. 1). W/o / With Fusion Pass \$875 / \$695. Senior: \$835 / \$675	\$ _____	_____
<input type="checkbox"/> Mt. Bachelor (Feb. 21-23). Adult: \$250, Senior (65-69): \$230, Over 70: \$205.	\$ _____	_____
<input type="checkbox"/> Leavenworth (Mar. 21-23). \$299 (or \$250 w/Fusion pass). Over 70: \$250.	\$ _____	_____
<input type="checkbox"/> Other: _____	\$ _____	_____

Comments (For whom you are paying. Roommate requests,...): _____

Signature(s): _____ Date: _____

Signature(s): _____ Date: _____

See our Trips cancellation policy on our web site: <http://www.mthigh.org/Documents/Trip-Cancellation-Policy.pdf>

Club membership = 323 Newsletter Distribution

The December 2013 issue is posted on our web site. Also:
 385 copies sent via email (as PDF files)
 22 paper printed copies sent via US Mail.
 Copies are sent to potential members, other clubs, etc..
Please help us minimize the cost of mailing paper copies.
Send your email address to: newsletter@mthigh.org.

Mt. High Membership



Our club membership runs from October 1st to the end of September of the following year. So, it's already past the deadline to renew. Most people renew their membership in person at one of our two main events: the **The Ski Fair** and/ or the **Mt. High Kickoff Party**.

When you renew in person, you receive your membership card right away. We don't normally mail them out, except by special request to our Membership director, Terry Swan, 503-729-3435 swans761@juno.com. So, contact Terry if you need a membership card.

For membership benefits, check our web site:
www.mthigh.org/Membership.htm

Powder Alliance

If you have a Fusion Pass to Timberline and Skibowl, you automatically get 30 free ski days at these 10 other ski resorts (3 tickets per resort). Can you ski all 12 of them? After all, they are free! What a ski safari that would be!!! See www.powderalliance.com



Emilio Trampuz
 Mountain High Newsletter editor
 4742 Liberty Rd. S., #296
 Salem, OR 97302
 Please check our web site,
www.mthigh.org
 for updates.