



Lift Lines

= No. 139-140, July-August 2012 =

Mountain High Snowsport Club, PO Box 2182, Portland, OR 97208



From the Prez



*It's the dog days of summer. Temperatures over 100 degrees (huh? I thought we lived in Portland!), time for the annual **bike ride and picnic**. Then in a bit, the **Seafood Party** extravaganza. Golfing and other activities with not a thought of skiing. Hold it! This is the Club That Really Skis, of course we're thinking of skiing.*

*Your trip leaders have been hard at work planning for next year. They have been sharpening their pencils and negotiating for some very nice trips next season. We'll return to **Idaho** and the **Kootenays**, we haven't been to either in several years. For those who are wondering, the Kootenays have two very fine ski areas within driving distance of each other, Red Mountain and Whitewater. Both are just North of Spokane and are known for powder.*

*Everyone had so much fun in **Utah** last year that we are doing it again. Can't beat the prices or the snow in the Ogden area. No crowds either.*

*Come to the **picnic** and check out next year's lineup. Talk to Linda, Emilio and Gordy about the ski areas we'll visit. Pick up some flyers. Join us for some fun activities next season.*

- Kurt



Note the color code.
Our club is blue.

2012-2013 CALENDAR

Blue: Mountain High events
Red: NWSCC / FWSA / Multi-club
Black: General events

Aug. 11 (Sat.): Mt. High Picnic
Aug. 17 -19: Mt. High Rafting
Aug. 25-26: Barlow Road Bike Ride
Aug. 27 (Mon): Mt. High Board meeting

Sept. 21-22: Ski Swap (MHSP)
Sept. 29 (Sat.): Seafood Party
Sept. 30 (Sun): Walk to Defeat ALS

Nov. 2 - 4 (Fri-Sun.): Portland Ski Fever Show at Expo Center
Nov. 5 (Mon): Ski Fair PDX Holiday Inn
Nov. 15 (Thr): Mt High Kickoff Party

Dec. 6-12: Ski Vail Cabernet/NWSCC

Jan. 18-21, 2013: Mt. High Idaho bus trip (Brundage Mt. & Tamarack)

Feb. 2-9: FWSA Ski Week in Aspen.
Feb. 22 - Mar. 1: Mt. High Utah trip (Powder Mt. & Snowbasin)
Feb. 24 - Mar. 2: Lake Tahoe sampler
 --Bergfreunde/NWSCC trip

March 23-30 : Mt. High Canada trip
 Red Mt., Whitewater, 49° North
March 25 - 30: FWSA mini ski week
 (5 days) at Mt. Bachelor.

Apr. 26-28: Mt. Bachelor Springtacular Blast

Mt. High

Let's Have Some Fun



Picnic & Bike ride, Sat. Aug. 11



Rafting, Fri.-Sat., Aug. 17-19



Barlow Road Bike Ride Aug. 25-26



Seafood Party, Sat., Sept. 29

FWSA

FWSA Convention



June 7 - 10, 2012. At the Far West Ski Association Convention in Ogden, Utah, **Randy Lew** was re-elected as FWSA President for another term, and **Debbi Kor** continues as the VP of Marketing.

In the club competitions our club won **1st place** in all 3 areas:

1. Web site
2. Newsletter
3. Outstanding club. The overall judging based primarily on a 10-page essay written about our club by our Prez, **Kurt Krueger**. See it on our Forms & Docs web page, or go directly to: www.mthigh.org/Documents/Mt-High-Outstanding-Club-2012-Final.pdf

See hundreds of Convention photos at: <http://photobucket.com/FWSA-Conv-2012>

NWSCC NWSCC & PACRAT Elections

June 20 (Wed.)

At this quarterly NWSCC meeting, elections were held for both the NWSCC and PACRAT Boards. Here are just some of the Board members:

NWSCC

President: Mary Olhausen
 Vice-President: Dave Rassmussen
 Secretary: Julie Rasmussen
 Treasurer: Marcia Brighton
 Membership: Colleen Walter
 Special Events: Debbi Kor

See complete list of NWSCC Board members at <http://www.nwskiers.org/Officers/Officers.htm>

PACRAT

President: Gordon Lusk
 Vice-President: Greg Dilger
 Secretary: Colleen Hankins
 Treasurer: Colleen Stroeder
 Party Director: Barb Pressentin
 Communications: Andy Hobart

See complete list of the PACRAT Board members at <http://www.pacrats.org/Board-members.htm>

Mt.High Mt. High Highway Cleanup

June 30 (Sat.) - Ten of us showed up for our "Spring" cleanup of our adopted 2-mile section of Highway 26, mileposts 51-53. We met in Mt. Hood Skibowl's parking lot, and spent the next 2 hours finding and removing all kinds of trash along the highway.

At noon, we had lunch at the Mt. Hood Brew Pub. **Debbi Kor** was our fearless leader, arranging for our safety vests, trash bags, and trash pickers. We all earned some good karma and had fun too!



For other club benefits, check our web site: www.mthigh.org/Membership.htm

Spelunking the Trout Lake Wild Caves

Led by Chris Wiley. Article by Linda McGavin



July 7 (Saturday). Our club member and PACRAT race-team captain, **Chris Wiley**, also happens to be the Chairman of The Willamette Valley Grotto, and invited us to participate in this easy caving excursion.

Only 3 intrepid Mountain High members showed up at Chris Wiley's invitation to join him in a beginners' "no crawling" trip through several of the nicer wild caves in the Trout Lake area: Bruce and Linda McGavin, and Chuck Westergren. Colleen Walter from NWSCC/PACRAT/Skiyente also came with her daughter Carinna and niece Molly; and Chris' brother and sister-in-law joined us so they could again tour the "New Cave" where they had become engaged 18 years

before (quite a romantic story!).

We have been through the Trout Lake area several times, but never knew that the area is the home of hundreds of lava tube caves. We literally drove less than 6 miles from Trout Lake and less than a quarter mile off the main road; parked on a dirt road in the woods; then in 80+ degree weather geared up with our warm clothes, gloves, and headlamps and walked only about 100 feet to a rocky hole in the ground.

Our first introduction to a wild cave was a big surprise, as we clambered down some rocks and found ourselves in a large, cool cavern. As we walked away from the entrance, sometimes over piles of rocks and sometimes over fairly smooth rubble, we soon lost the daylight and were totally dependent upon our headlamps. Chris was great at explaining about the features of this cave, including the "cave slime" on the ceiling and walls of the cave. It was obvious that this cave had seen a lot of visitors over the 50 plus years since it was discovered, because some of them had left their initials in this natural medium, which, very unfortunately, will be preserved through the ages. We also discovered that Chris hadn't quite been accurate when he said "no crawling," as fairly soon there was a section where we first had to bend over, then stoop down, and then actually crawl. It was quite an experience, and we were the ONLY ones there!

Chris next led our car caravan (with Chuck on his motorcycle) less than a mile away to the Ice Cave, which is a highly public cave with people swarming around and through it, and cars coming and going constantly. Only a few of us went into that cave, after having the experience of being the only ones in the New Cave. We joined up there with Dennis Glasby, VP of The Willamette Valley Grotto, and a family with 3 small children (ages 6, 7, and 9) who have been caving for years! They lent me some knee pads which were greatly appreciated because, you guessed it, there was more crawling ahead!

Dennis led our caravan a short distance to the J.a.R. Cave, which was only discovered in 1985 and which was even more amazing than New Cave. Before we trekked through the forest on what appeared to be a deer trail to this very wild cave, Dennis showed us a detailed precision map of the cave with various passages and "rooms" to give us an idea of what we were going to see.

This cave has a lot of natural formations which are quite unusual and rare in these lava tube caves. The picture with Chris Wiley and Colleen Walter is taken at a formation named the Grand Tetons, for obvious reasons. If you want to get an idea of what we saw in this cave, see the video posted at www.youtube.com/watch?v=7HtLTdFGfRY. While this was not taken on our trip, it shows the amazing things that we experienced, and gives you an idea of what it was really like to be inside this cave.



See more photos at www.mthigh.org/Photos.htm.

Picnic & Bike ride

August 11, (Saturday). Click here for [map](#) on our website.

Place: **Sellwood Park, Picnic area A**

9 am -- Bike ride, from lower parking lot, near the river.

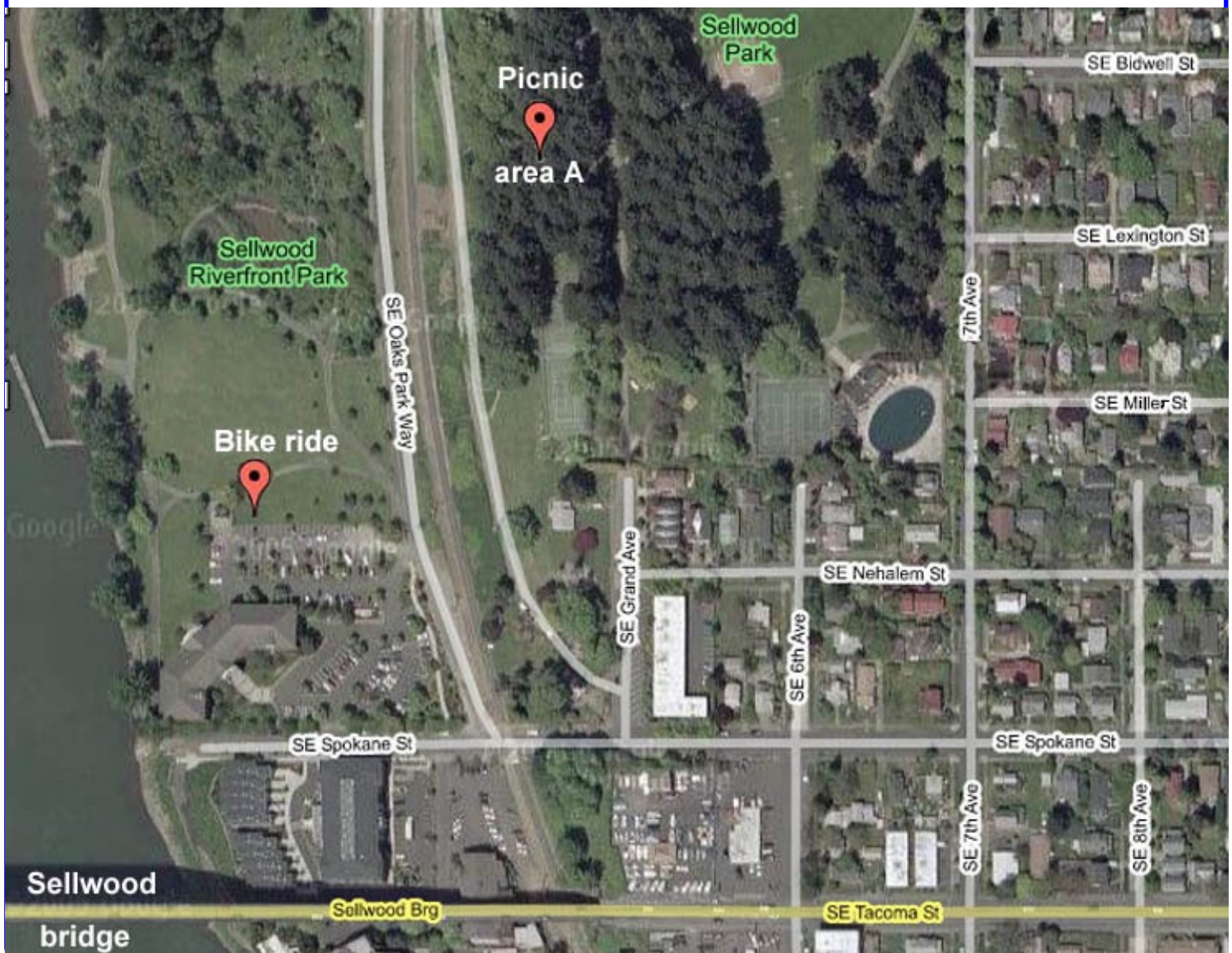
11 am -- Picnic starts. (Food served around noon.)

All current and former members of the clubs known as Plaza, Edgset, and Mountain High are invited!

A variety of gourmet sausages will be pro-

vided by the club, but it's mostly a **potluck**. So, bring some food, some drinks, and maybe a chair.

Directions: Immediately after crossing the Sellwood bridge (if coming from the west), turn left onto **6th Ave.**, and immediately start looking for parking spot. Enter the park on foot by following **SE Grand Avenue** (from the south), and follow the path for abt. 100 yards. Our picnic area is on the left side of the path. See map. "Not being able to find us" is not a valid excuse!!!



Mt. High

Deschutes River Raft Weekend



Aug 16-19, 2012. This has become an annual tradition for our club. A long weekend of rafting and frolicking in the sun on the Deschutes River at Maupin, Oregon.

Contact Gordy: 503-804-8363, GordyLusk@hotmail.com

We are already past the August 1st signup deadline but you can still sign up if you send in your payment immediately.

**Trip includes:**

Camping: Thursday, Friday and Saturday night in Maupin City Park. Camp sites at new location (see next page). RV space available for an additional \$20.00 a night.

Rafting: (Row, Paddle or just ride) Friday and Saturday. We'll provide the rafts. On Friday, we'll assemble at Maupin City Park and then raft 18 miles from Harpham Flat to Sandy Beach. On Saturday, we'll start from the mid-point and raft downstream in the morning, and then do the upper half in the afternoon (to avoid the crowd).

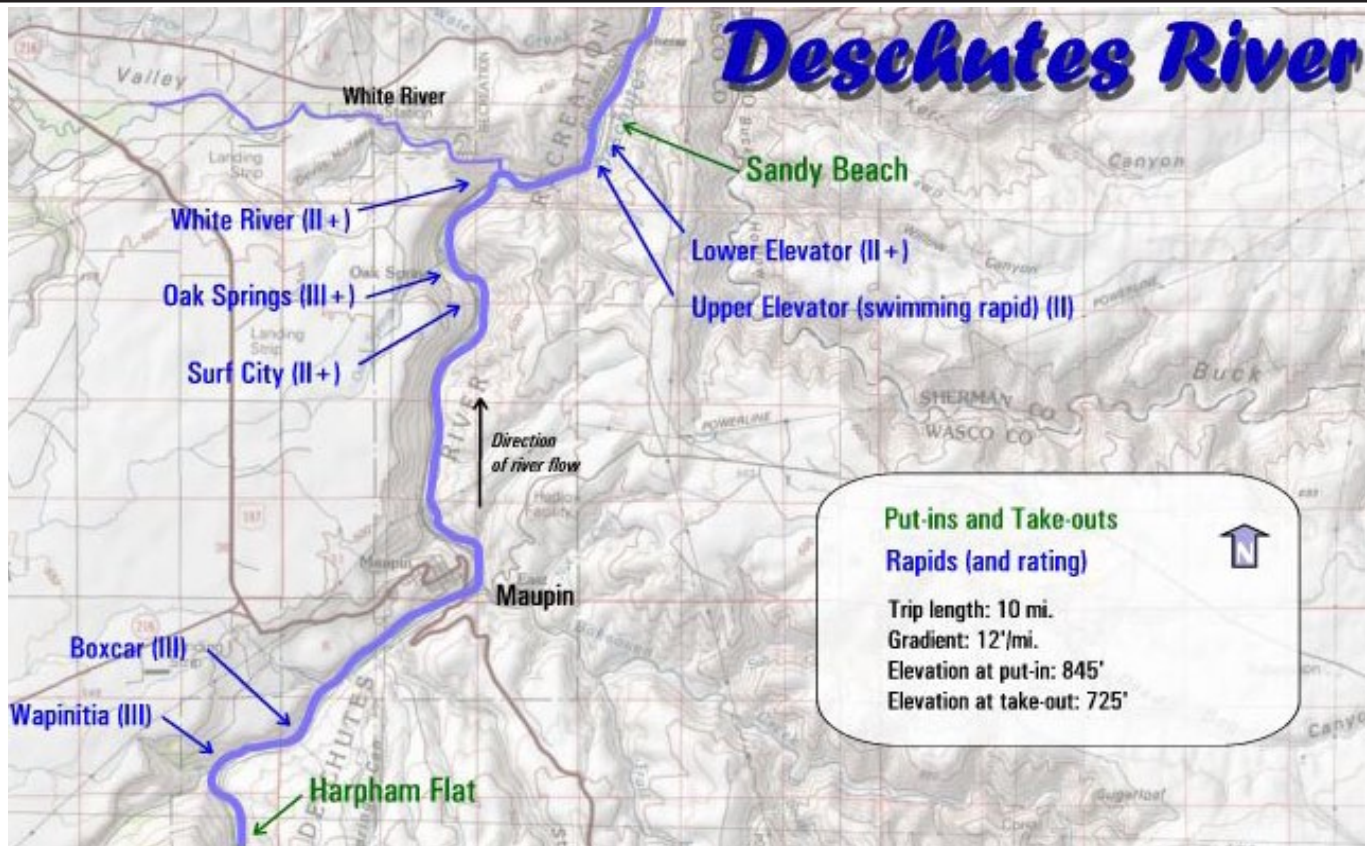
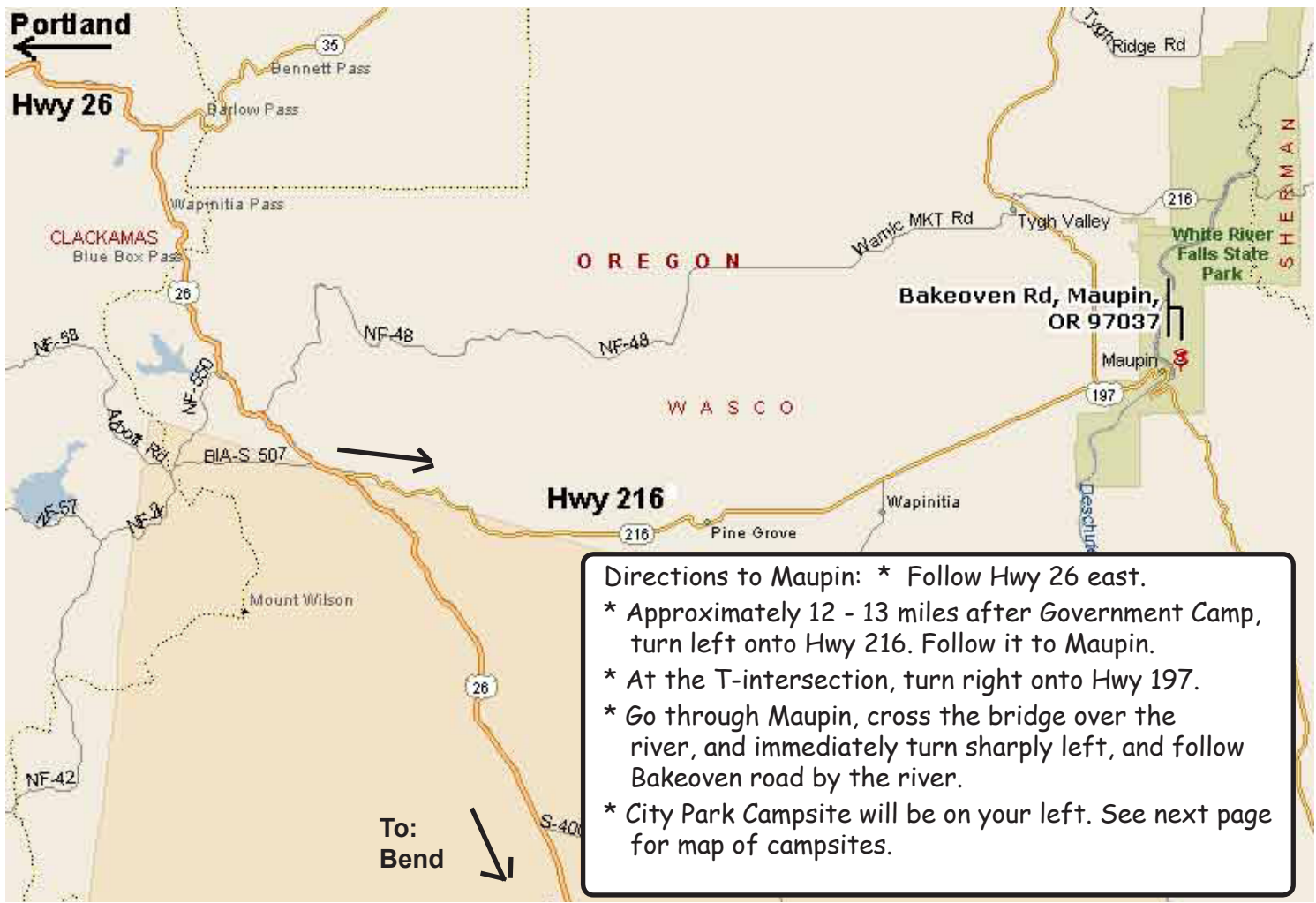
Saturday night dinner: Lou's- Q will cook chicken, pork ribs and BBQ beans on Saturday only, but bring a salad, dessert or HDO for Sat. dinner. For other times, bring your own food and drinks. Also, bring quarters for the showers!

Camp, raft, dinner = \$95.00 pp, (Non-members \$110.00) Call for special price if you have your own raft/kayak.

Camp, permit, dinner (no raft): \$50. Dinner only = \$20.

To sign up, please use the Dough Transmittal form, page 11 or print the form from our web site. See the [Forms](#) page at: <http://www.mthigh.org/Forms.htm>. Here's a map of our reserved campsites in Maupin:



MOUNTAIN HIGH**Rafting****SNOWSPORT CLUB**

Barlow Road Bike Ride

Aug. 25 - 26 (Sat. - Sun.)

Experience a part of Mt. Hood and Oregon history, the beauty, the majesty, the pioneering feeling of conquering the Barlow Trail Road from Oregon City Oregon to Mt. Hood...this is something you WON'T want to miss.



A 2-day century tour following the historic Barlow Road from the end of the Oregon Trail to Government Camp and back.

Historic and very scenic routes for riders of all abilities:

1. **Trail Scout:** 120 miles and 7,000 feet in one day.
2. **Trail Boss:** 50 miles each day.
3. **Pioneer:** 25 miles up from Sandy, 50 miles down.
4. **Junior and Senior:** 50 miles downhill on day 2.

Most of the ride will be on quiet rural roads except Hwy. 26 from Zig Zag to Government Camp, which has a wide shoulder.

Rest stops every 10 miles, food, energy drinks, toilets, sag wagons, massage, mechanics and medical help. A great dinner at the Cascade Ski Lodge, and live music.

The maximum riders is 2,000. Registration fee is \$75.00 per rider. You can stay at the Cascade Lodge for \$20 a night. Sign up for it and register at:

www.barlowroadride.com Questions: 503-272-3301.

Mt. Hood Ski Patrol Ski Swap

Sept. 21-22 (Fri.-Sat.)

Friday 4pm - 9pm.

Saturday 9am - 6pm.

Support the **Mt. Hood Ski Patrol** and the **West Linn**

High Snowboard Team at the Mt. Hood Snosport Swap September 21-22, 2012, at the **Washington County Fairgrounds**, 873 NE 34th Avenue, Hillsboro, Oregon 97124.

Consignment items will be accepted, and you could make money on your old ski gear. A portion of the swap proceeds benefit the Ski Patrol and the Snowboard Team.

Look for discount admission coupons and a chance to win a season pass at the Mt. Hood Snosport Swap website, <http://mhsss.com/h>



Mt. High

Seafood Party



Sept. 29 (Sat.) 6 pm.
(If you want to help with the setup, please come at 5:30 pm.)

Our annual end-of-summer seafood party has become so popular that it would be hard to

find a big enough home to host it. So, for the second time, just like last year, we rented a space. This time at the **Multnomah Arts Center**, Portland. To cover the cost of rental, please bring **\$10** per person. But, hey, you get a whole dinner in return!

Our club will provide the **seafood** (salmon, shellfish, etc.) and sodas and water. BYOB and bring a side dish or dessert.

If your last name begins with:

A - P : bring a salad or side dish;

R - Z: bring dessert.

EVERYONE MUST RSVP by September 22nd.

Location:

Multnomah Arts Center
7688 SW Capitol Hwy.
Portland, OR 97219.



Click here for **Google map**.

See driving directions on our web site.

Please RSVP to Debbi Kor for a headcount:

ijustwannarun1@comcast.net or (503) 314-7078.

ALS

Walk to Defeat ALS

Sept. 30 (Sun.) 11 am.

A 3 mile walk along Naito Parkway, starting at the World Trade Center, benefitting the ALS Foundation for Lou Gehrig's disease.



The Walk starts at 12:00, but we're supposed to gather starting at 11. If you want to connect with other Mountain High ski buddies, please contact Debbi Kor, and she will arrange a place to gather at 11 am.

Contact **Debbi Kor**, ijustwannarun1@comcast.net or (503) 314-7078.

MOUNTAIN HIGH

Trips

SNOWSPORT CLUB

Cabernet club

Vail



December 6-12, 2012

6 nights lodging, 4 days lift tickets, parties, more. Trip sponsored by Cabernet Ski & Sail Club. All members of NWSCC clubs are welcome. Included in the package:

- * Round trip air Portland to Vail and shuttle to Vail with a stop for groceries/adult beverages.
- * 6 nights' hotel accommodation at the recently renovated Landmark Tower West in Vail 3 bedroom/ 3 bathroom condos.
- * 4 day lift ticket good at Vail and Beaver Creek with free shuttle to Beaver Creek. (Also good at Keystone and Breckenridge but shuttle may be an issue) -- 5th day additional \$50.

Cost per person, double occupancy = **\$1,100** per person, including air. Price for seniors = \$1,075.

Payment schedule: \$100 deposit due now to reserve your spot. + \$500 due by August 24 + \$500 due by October 16.

Make your check payable to **Cabernet Ski Club**, and mail it to: **John Reinhardt**, 6105 SW Sheridan Street, Portland, OR 97225.

Contact: John Reinhardt, phone 503-330-3838, johnreinhardt@hotmail.com.

FWSA

Aspen Ski Week



February 2-9, 2013

A full week of activities and racing in spectacular Aspen/Snowmass. For lodging, choose Aspen or Snowmass. Racing and most social events take place in Snowmass. Bus transportation between Aspen and Snowmass is frequent and free.

\$1,365 The Gant in Aspen, OR

\$1,385 Crestwood Condos in Snowmass.

Price does NOT include air, but includes:

- * 7 nights lodging (double occupancy);
- * Welcome Party; Mountain Picnic;
- * Races
- * Pub Crawl specials (no-host)
- * Ski Week Banquet
- * Awards Après Ski Party
- * 5 of 7 day Lift Ticket

Contact:

Barbara Bousum, 503-224-3584, bbousum@gmail.com

Chris Ciardi 503-297-5351, c2blondie@hotmail.com

Mt. High

Idaho bus trip



January 18-21, 2013 -- Our shortest trip this season!

3 nights lodging, 3 days lift tickets at 3 ski areas. The price includes lodging, lift tickets, bus transportation and a lunch on the way to Idaho. Trip leaders: Linda & Emilio.

We'll leave Portland on Friday morning, around 8 am, have lunch in Pendleton, and arrive in McCall, Idaho just in time for dinner. We will stay in McCall 2 nights and ski at:

Tamarack, the newest ski area in Idaho, just 17 minutes south of our hotel in McCall. 2,800' vertical, 900 acres, 2 high-speed quads (the 3rd one was taken away), plus a few minor beginner lifts.

Brundage Mt. is less than 10 minutes from our hotel. It has: 1,800' vertical, 1,500 acres, 1 high-speed quad and 4 fixed-grip triples.

On the way back home, we will stop for one more night (Sunday night) at Baker City, OR. We'll return to Portland on Monday (MLK Day), by 9 pm, after skiing at:

Anthony Lakes: The ski area with the highest base in Oregon, at 7,100'. It offers: 900' vertical, 1,100 acres, 1 fixed-grip triple chair, plus a beginner handle tow.

Cost per person, double occupancy = Approximately **\$380** per person. We are still waiting for confirmation of some of our costs. Price for those over 70: \$25 less.

Payment: \$100 deposit due now to reserve your spot.

Please use the [Dough Transmittal Form](#) on the Forms & Docs page on our web site, or on page 11 here. Make check payable to **Mountain High Snowsport Club**, and mail it to: **Mountain High**, PO Box 2182, Portland, OR 97208.

Contact:

Linda McGavin, 503-652-2840, Trips@mthigh.org or

Emilio Trampuz, 503-378-0171, Emilio2000@earthlink.net.



MOUNTAIN HIGH

Trips

SNOWSPORT CLUB

Mt. High Utah: Powder Mt. & Snowbasin  **Feb. 22 - March 1, 2013**

Last winter's Utah trip was so good, we are doing it again!

6 nights trip. 4 days of skiing included, optional 5th-6th day.

Saturday is travel day. We'll start skiing Sunday. On the tail end of the trip, on Friday, Feb. 24, you will either spend the day driving home, or ski one more day and catch an evening flight home.

We will stay at the Moose Hollow Condos in Eden, 20 minutes from Ogden, 1:15 from the Salt Lake City airport. Included are 2 lift tickets to Powder Mt. and 2 tickets to Snowbasin. This gives you the flexibility to go ski some other Utah resort as well.

Powder Mt. offers 2,000' vertical, 5,500 acres, 1 express quad, 1 fixed quad, 1 triple, 1 double chair.

Snowbasin hosted the Olympic Downhill in 2006. It has luxurious new lodges, 2,959' vertical, 2,800 acres, 1 tram, 2 gondolas, 1 quad, 4 triples.

The pricing is still in the works, but it won't be much different from last year.

Use [Dough Transmittal Form](#) to send \$100 deposit, due by November 15. Full payment due by January. No refunds after January 20 unless you fill your spot. Info:

Gordy: 503-804-8363, GordyLusk@hotmail.com

Bergfreunde Lake Tahoe Sampler 

Feb. 24 (Sun.) - Mar. 2 (Sat.). Mt. High members are invited to join this flexible carpooling trip.

Cost: Approximately \$300 (ppdo, land only) includes:

- 6 nights lodging
- Group dinners Tues. and Thurs.
- Hospitality room Sun, Mon, Fri.

- Legendary Wed. night dinner dance cruise on the M.S. Dixie II paddle wheeler;
- A trip souvenir.

Lodging: at the Bluelake Inn, within a few blocks of the casinos and the Heavenly gondola. Each room has a refrigerator and microwave.

Skiing: We'll be playing it by ear and taking advantage of any lift ticket deals that are offered by the 16 different ski areas. We'll discuss our findings at a pre-trip meeting.

Contact: Bob Burns: 503-524-5261 (phone/fax), bob@inkjetman.com.

Send payments to: Bob Burns, 9980 SW Citation Place Beaverton, OR 97008. Please include: Your name; club name; address; phone numbers; and email address.

Mt. Hood Meadows New RFID Gates and Prices

- by Greg Anderson -

At the Open House for Meadows' new office in NW Portland, on August 2nd, Mt. Hood Meadows announced their new RFID gates and 2012-13 season passes:

Adult	\$524 (+\$25 over last year)		
15-22	\$384		
7-14	\$264	10-time	\$419
6 & under	\$25	Midweek	\$429
65 & older	\$384	Night	\$129

Daily lift tickets:

Adult peak \$89 Adult off-peak \$74

They have other pass options: pay as you go, add week-ends to the midweek, or just buy more days.

Dave Tragethon said the sale will start on-line for season passes September 1st and the above prices are valid until November 4th.

Everyone will need the new pass this year, but you can use your old picture they have on file. You will have to get the passes in person – ski shows, REI, Meadows office or at the Resort. They will not mail out any passes.

They had an RFID gate on display at their office and it was set up for us to demo...it works pretty quick – better than those at Bachelor, but we'll have to see how it functions on the mountain.

MOUNTAIN HIGH

Trips

SNOWSPORT CLUB

FWSA Bachelor Mini Ski Week



March 25-30, 2013

A shorter version of FWSA's Ski Week. Only 5 days instead of a whole week.

Price: \$460 - \$495 includes:

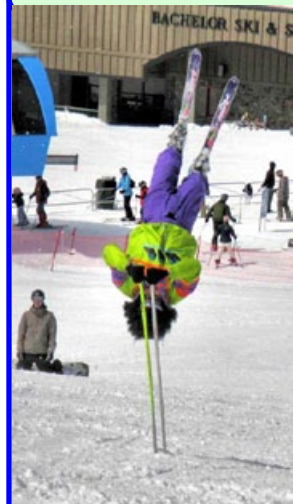
- * 5 nights lodging at The Riverhouse
 - * Welcome reception * Full breakfast daily
 - * 3 or 4 day lift tickets
 - * Last Tracks Apres Ski Party
 - * Tubing Party, * Farewell Party
- (Transportation not included.)

Contact: **Gloria Raminha**, FWSA Travel, at: Fwsa.natravel@bak.rr.com

See www.fwsa.org for more details.

Note: Don't confuse this trip with the Mt. Bachelor Springtacular Blast at the end of April.

Bachelor Blast



April 26-28, 2013

A flexible week long or weekend trip to Mt. Bachelor, supported by the NW Ski Club Council, which represents almost all NW ski clubs. This trip will be open to clubs all across the country. So, think of this as a multi-club trip.

It will be totally different this year. We'll have LOTS of options for skiing, golfing, kayaking, biking, etc., with lots of flexibility, and also another chance to ski with the Legends, the original hot dogs of skiing, who can still teach you a trick or two.

Details are yet to be announced, but mark your calendar now.

Contact: **Linda McGavin** at 503-652-2840, Trips@mthigh.org.

Mt. High Canada (Red, White & You)



March 23 - 30, 2013 - Red Mt., Whitewater, 49° North. 6 nights lodging, 5 days lift tickets at 2 ski areas in British Columbia. Red Mt. is famous for its powder, but Whitewater, just an hour north, gets even larger quantities of it.

Set aside a week for some fabulous powder skiing. On Sat., March 23, we'll just drive and/or carpool up there.

We'll spend 4 days and nights in the charming town of **Nelson**, B.C., just 15 minutes from the **Whitewater** ski area. Three Whitewater lift tickets are included.

The 4th day is an optional day of relaxation. We might visit the **Ainsworth Hot Springs**, about 30 miles north of Nelson, on the shores of Kootenay Lake, or go ski.

Whitewater ski area gets 40 feet of snow annually, on 2,044' vertical, 1,184 acres, served by 1 triple chair and 2 double-chairs. As of 2010, the ski area doubled its size with the opening of the Glory Ridge chairlift. Ymir Peak towers majestically over the ski area. Click here for a great [video](#).



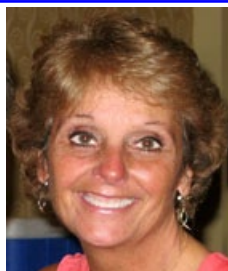
Red Mt., just north of the US border, near Rossland, we will ski for 2 days, staying in a motel in Rossland, just 2 miles away. Red Mt. has 2,919' vertical, 4,200 acres, of which 1,685 are lift served by 1 quad, 2 triples, and 1 double chair. On the way back home, if you still have energy, there is an optional \$70 1-day ski package with lodging in the town of Chewellah, WA, and skiing at **49° North**, where you can ring the Nordic God's bell for good luck and then ski the 7 deadly sins. 49° North is opening a new chair this season on Angel Peak.

Price is still being worked on. It will be between **\$650 and \$690** per person, depending on the type of room. Seniors might get some serious discounts. **For now:** \$100 deposit will reserve your spot. Trip leaders: Linda McGavin & Emilio.

Please use our [Dough Transmittal Form](#). Make your check payable to **Mountain High Snowsport Club**, and mail it to: **Mountain High**, PO Box 2182, Portland, OR 97208.

MOUNTAIN HIGH**Contacts / Club info****SNOWSPORT CLUB****Man & Woman of the Year**

Our club's Man and Woman of the Year, **Bruce Ellison** and **Debbi Kor**, have been also selected as the Northwest Ski Club Council's Man and Woman of the Year, and have represented the Northwest at the FWSA Convention in Ogden in June.

**Bruce Ellison****Debbi Kor****Mountain High Meeting**

Last Monday of the month

Aug. 27 (Mon.): Open to all who want to get more involved with the club. Gather at **6:00 pm**. Start at **6:30 pm**.

Location: Round Table Pizza, 10070 SW Barbur Blvd., (near Capitol Hwy).

Mountain High snowsport club contacts:

President: Kurt Krueger H: 503-625-1492,
Vice-President: Terry White H: 503-781-4558
Secretary: Chris Brooks H: 503-764-5323,
Treasurer: Nancy Pratt H: 503-593-9427,
Membership Director: Terry Swan H: 503-729-3435
Race Director: Bruce Ellison H: 503-697-7892,
Newsletter Editor: Emilio Trampuz H: 1-503-378-0171,
Social Activities: Debbi Kor H: 503-314-7078,
Golf: Cal Eddy H: 503-631-3115,
Hiking: Elisabeth Fontaine H: 503-524-5774,
Mid-week skiing: Ken Brundidge H: 503-720-0620,
Trip Directors: Linda McGavin H: 503-652-2840,
 Gordon Lusk H: 503-804-8363,

President@mthigh.org

TWhite223@msn.com

jruffman@al.com

Treasurer@mthigh.org

swans761@juno.com

Yuffiet@comcast.net

newsletter@mthigh.org

ijustwannarun1@comcast.net

W: 503-805-8606, baebaw@ccgmail.net

Lise518@msn.com

KenBrundidge@comcast.net

Trips@mthigh.org

GordyLusk@hotmail.com

General info:

info@mthigh.org

Web site:

www.mthigh.org

DOUGH TRANSMITTAL FORM

Mail check payable to: Mountain High Snowsport Club, PO Box 2182, Portland, OR 97208.

PLEASE PRINT CLEARLY: ☐ New membership ☐ Renewal

Name(s): _____

Address: _____

Phone (Hm): _____ Phone (Wk): _____

Email (Hm): _____ Email (Wk): _____

Email Preferences: - Newsletter (once a month): ☐ yes, link only ☐ yes, complete file ☐ no
☐ No changes - Club news & events (between newsletters): ☐ yes ☐ no
 (same as last year) - Other ski news (NWSCC, FWSA, ski areas, trips...): ☐ yes ☐ no
 - Is it OK to share your email address with other club members? ☐ Yes ☐ No

Please take my money, and apply it toward the following Ski Club fun stuff: **Deposit?** **Paid in full?**

☐ **Annual Membership** (Oct. 1, 2012 - Sept. 2013): Single (\$25); couple (\$40) \$ _____

☐ **PACRAT Racing (2013)** \$95 for the whole season. Team: _____ \$ _____

☐ **Rafting trip** (Aug. 17-19, 2012). \$95. Non-members: \$110. \$ _____

☐ **Rafting trip RV space** RV space : \$25 per day. \$ _____

☐ **Ski trip deposit** Specify trip to reserve spot (\$100): _____ \$ _____

☐ **Other:** _____ \$ _____

Comments (For whom you are paying. Roommate requests,...): _____

Signature(s): _____ Date: _____

Signature(s): _____ Date: _____

See our Trips cancellation policy on our web site: <http://www.mthigh.org/Documents/Trip-Cancellation-Policy.pdf>

Club membership = 322 Newsletter Distribution

The July 2012 issue is posted on our web site. Also:
 386 copies sent via email (as PDF files)
 24 paper printed copies sent via US Mail.
 Copies are sent to potential members, other clubs, etc..
Please help us minimize the cost of mailing paper copies.
Send your email address to: newsletter@mthigh.org.

Fundraisers, Good karma**Sept. 21-22 (Fri.-Sat.): [Mt. Hood Snosports Ski Swap](#)**

at the Washington County Fairgrounds. Proceeds benefit the West Linn High Snowboard Team and the Mt. Hood Ski Patrol. Friday 4-9pm. Saturday 9am-6pm.

Mar. 1 - 2, 2013: [Hope on the Slopes](#),
 a 24 hour ski challenge and fundraiser for the American Cancer Society, held at Mt. Hood Skibowl Friday afternoon - Saturday morning.

Mar. 10 - 11, 2013: [Oregon Cancer Ski Out](#),
 a fun 2-day event (Sunday & Monday) at Mt. Hood Meadows. Teams of 5 compete for best consistency (not speed).

Apr. 13 (Sat.), 2013: [Ski to Defeat ALS](#),
 a fundraiser for ALS (Lou Gehrig's Disease). This event, inspired by **Fred Noble**, will be held at Mt. Hood Meadows.

Hwy. 35 Raised over White River

Crews have been working all summer to build a higher bridge over the White River and raise the road level to avoid future highways closures such as the one in the Fall of 2007, when Hwy. 35 was closed due to rocks and debris brought down by torrents on White River. The old bridge will be torn down. Photos: June 30, 2012.



Emilio Trampuz
 Mountain High Newsletter editor
 4742 Liberty Rd. S., #296
 Salem, OR 97302

Please check our web site,
www.mthigh.org
 for updates.