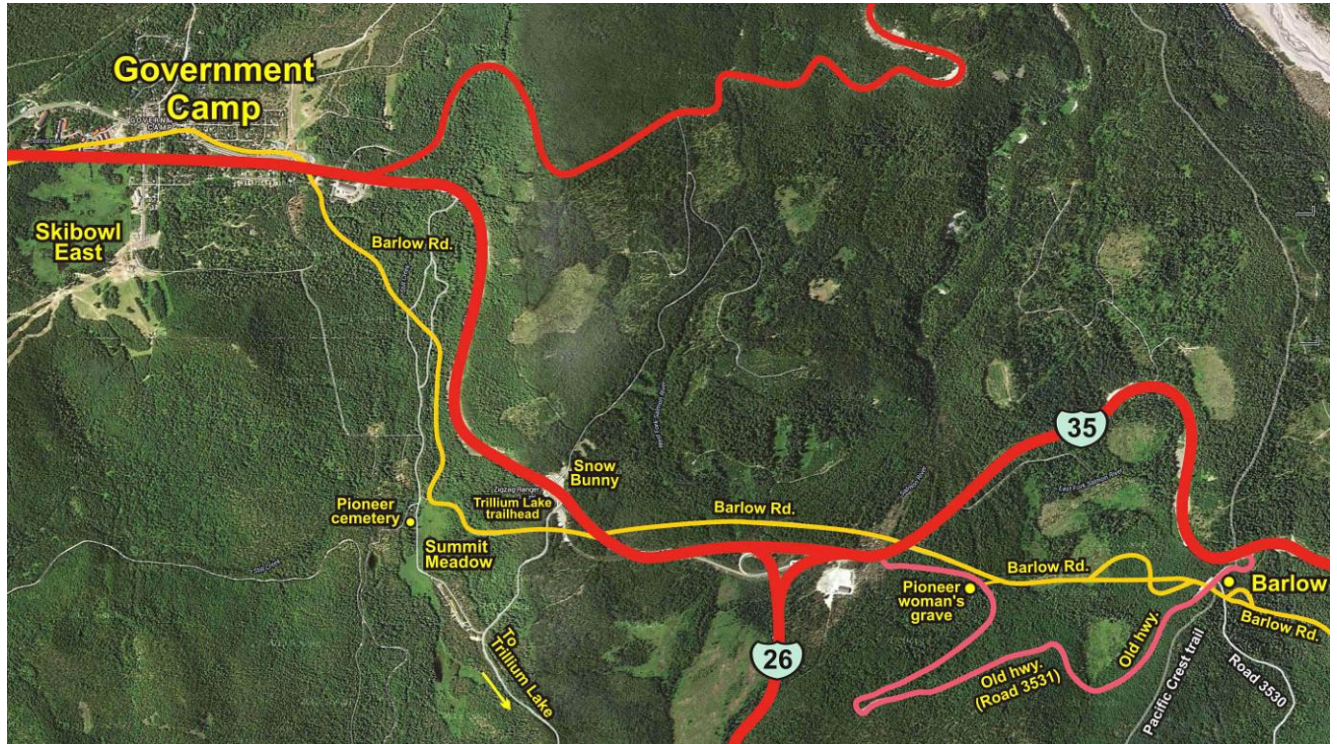


# Mt. Hood History bike ride

## Barlow Pass to Rhododendron



The YELLOW line is the original wagon trail, a.k.a. Barlow Road.  
The thick RED line shows modern Highways 26 and 35.  
The PINK line is the old Mt. Hood highway, now abandoned.

### On this bike ride, we shall visit:



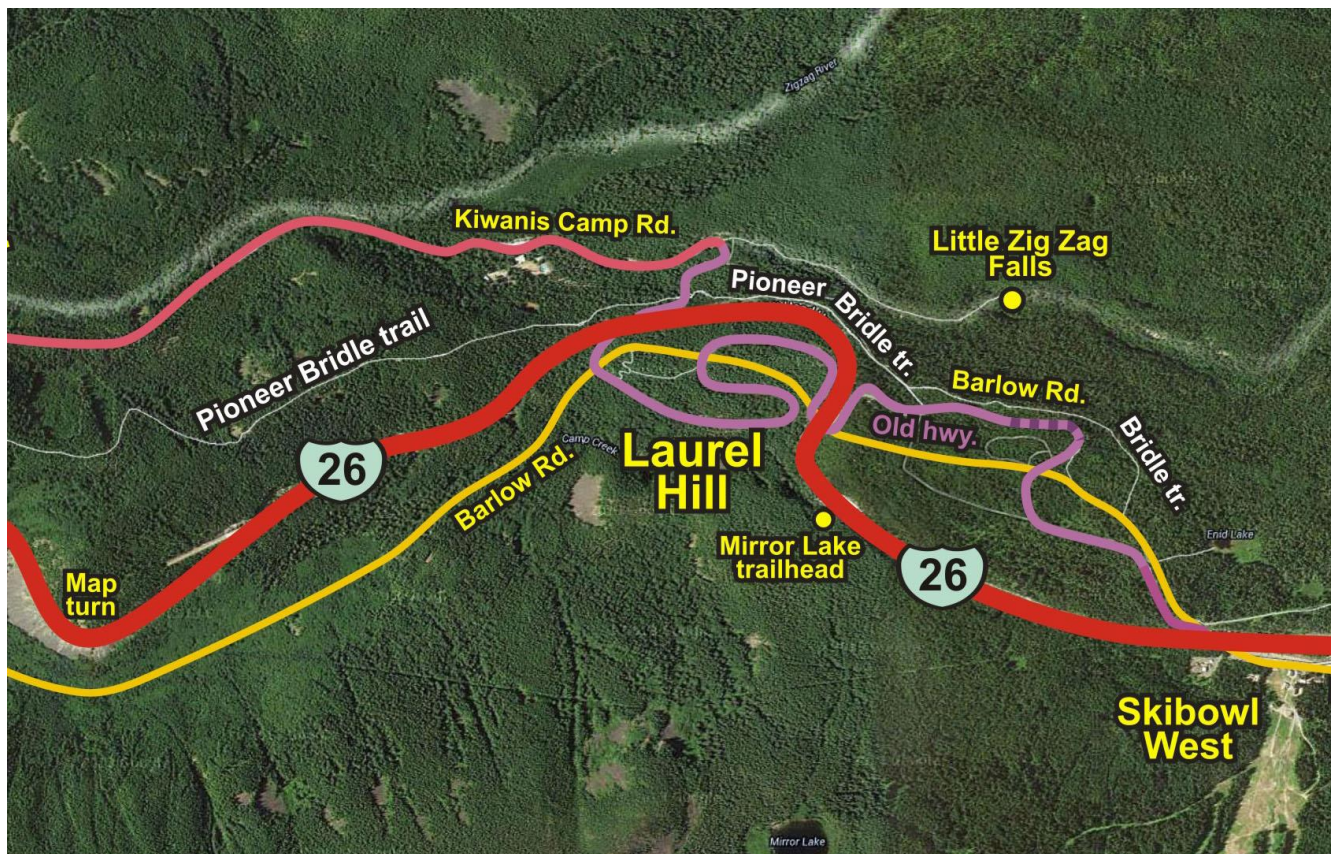
1. **Barlow trail** - original wagon route. Parts you haven't seen before.
2. The old **Mt. Hood highway**, before the modern Hwy 26 was built. It is overgrown with trees and moss, but it is still paved. Some sections have been destroyed. See what's left.
3. **The best, most beautiful view of Mt. Hood.** Bring your camera!
4. **Pioneer Woman's Grave.**
5. **Summit Prairie** (aka Summit Meadows), one of the last rest stops on the Oregon Trail. There is a Pioneer cemetery there now.
6. Hear the ghost of **Perry Vickers**, who is buried at Summit Meadows.
7. **Laurel Hill**, the steepest part of Barlow Trail. The pioneers had to lower their wagons with ropes, or tie a tree to the back of the wagon to act as a brake. NOTE: Because of the safety improvements on highway 26, which will include a concrete median barrier, access to



Laurel Hill will be impossible when travelling westward from Government Camp.

8. **The "bat cave"** - which is actually a **narrow tunnel** made for horses. Yes, for the US Cavalry! After all, that's how Government Camp got its name, when the cavalry left some supplies there for a while.
9. **Little Zig Zag Falls** (just a beautiful nature spot).
10. Lunch at the **Still Creek Inn** in Rhododendron
11. **Historic buildings** in Government Camp: Mt. Hood Museum, Huckleberry Inn, Cascade Lodge, Thunderhead Lodge (the starting point for the SkiWay aerial tram - the bus on cables to Timberline).
12. **Laurel Hill** - the steepest part of the original Barlow Trail.
13. **Little Zig Zag Falls** (just a beautiful nature spot).
14. **Kiwanis Camp Rd.** (starting point for several Mt. Hood hiking trails)
15. **Toll gate** - a replica of the gate where toll was charged for every wagon and every head of cattle or sheep.

NOTE: Most of the riding will be on paved surfaces or relatively smooth dirt road. But we will dismount and walk our bikes in a few narrow and/or steep sections. A racing bike with very thin tires is not recommended. A street/touring bike is OK. A mountain bike is OK.





## Some scenes from the bike ride



The sign at Barlow Pass, our starting point.



Man-made obstacle on the old road.



The old road abruptly cut off by Hwy.26



One of many signs along Barlow Road.



Secluded section. Quiet. Lots of shade.



A ride down Road 35, parallel to Hwy.26.

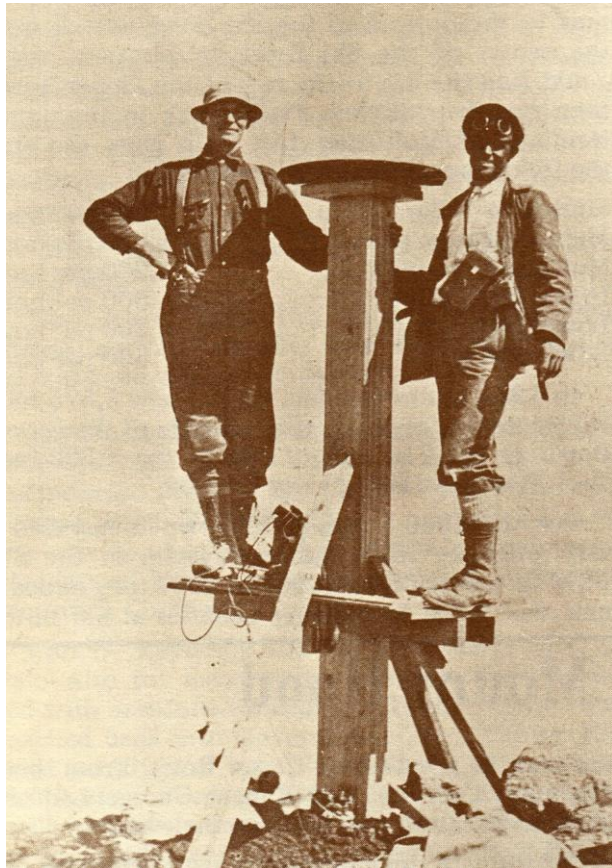


Much of the tour will focus on the Oregon trail (Barlow Road), but it is good to also read up on the general history of Mt. Hood. See below.

## Mt. Hood

### Cabin on the Summit of Mt. Hood

A cabin was built on top of Mt. Hood and served as a firefinder lookout station and permanent living quarters for a watchman. The cabin was manned from 1915 to 1933 by a succession of 12 hardy individuals.



**Elijah Coleman** proposed the plan to the Forest Service and actually built the cabin, with the help of several people who were paid \$5 a day for hauling all the timber and building tools up the mountain, including 120 pounds of nails.

Elijah manned the cabin for the first 4 years, during which time he became a legendary figure on the mountain, regularly spotting dozens of forest fires and reporting them to the Forest Service over miles of telephone wire that he himself strung all the way to the summit and had to take down in September for winter storage. The wire also required frequent repairs.

Elijah also rescued numerous people on the mountain, moving with extraordinary speed and agility up and down the mountain, often more than once in a single day.

*First Lookout Station on the summit of Mt. Hood, 1915.*

*Elijah (Lige) Coleman on the left.*

*Photo US Forest Service.*

*Published in "Mt. Hood - A Complete History" by Jack Grauer, 1975, page 58.*

Lige Coleman is honored by having a street in Government Camp named after him.

# Climbing to the Summit of Mt. Hood

The earliest reported climbers of Mt. Hood were not always truthful.

It is widely suspected that **Thomas Dryer**, publisher of the Weekly Oregonian, did not really reach the summit in his August 1854 expedition with several other people, though he had published a controversial account of it in his own newspaper. Members of his team used some ridiculous mathematical equation, based on the latitude of 44 degrees, the temperature, the southeast exposure, the depth of the snow and the meltage of the snow in the afternoon, to calculate the height of Mt. Hood as 18,361 feet. The actual height is 11,240 feet.

A **Mr. Belden** claimed, in October 1854, to have climbed the mountain. He found the summit to be at 19,400 feet, and that breathing was very difficult. Above 18,000 feet he claimed blood oozed from pores in the skin, eyes bled, and blood rushed from their ears.

The first well documented climb came on **August 6, 1857**. This climb was made by **Henry L. Pittock** (who later succeeded Thomas Dryer as editor of the Weekly Oregonian), **Prof. L.J.Powell**, **William S. Buckley**, **W. Lyman Chittenden**, and **James G. Deardorff**.



## The Summit Ski Area in 1927.

Note that the Summit ski area is not on the summit of Mt. Hood, but rather at the highest point of the mountain pass on Highway 26.

The ski area is located on the North-East end of Government Camp.

# Timberline Lodge

Timberline Lodge was built during the Great Depression by the Works Progress Administration in 1936. It was dedicated in **September 1937** by President **Franklin D. Roosevelt**, and he declared it a venture made possible by the WPA to represent new opportunities in the United States.

Artists working under the Federal Art Project created works and furnishings for the Lodge, which remain intact today at the Lodge. It is the only building today that is constructed and furnished **by hand**. The Lodge is an inn and ski resort, but it is also a museum—housing a catalogued permanent exhibition of American design, painting, and craft work of the 1930s. The building was declared a National Historic Landmark in 1978, has been filmed in numerous movies, including *The Shining*, in 1980.





# Timberline Ski Area

This is the only ski area in North America that is open 12 months a year. It offers 3,690 vertical feet of skiable terrain. It is located on the south face of Mt. Hood, the tallest mountain in Oregon.

In 1939, Timberline installed its first chairlift, with one-person chairs, the first lift on the Magic Mile. This was only the second chairlift in the United States, right after Sun Valley. But, it was also the longest chairlift in the world for a while.

Today, Timberline has 4 detachable express quad chairlifts.



The Magic Mile, the first chairlift in Oregon in 1939, and also the longest one in the world at the time. It went from the present day climbers' parking lot (Salmon River parking lot) to Silcox Hut (which was the upper terminal of the original Magic Mile lift).

## Government Camp

Government Camp began in 1849 when the first U.S. regiment of Mounted Riflemen crossed the plains into Oregon country arriving at The Dalles. Most of the troops and their equipment were transported downriver to Vancouver, Washington by boat. Plans changed and some of the troops were ordered to proceed to Oregon City via the Oregon Trail (Barlow Road).

Bogged down by mud and snow, with half of the livestock lost or dead and soldiers near total exhaustion, Lt. David Frost abandoned 45 Cavalry wagons in October 1849, before starting down Laurel Hill. Their noted presence beside the Barlow Road became the namesake of the alpine village - Government Camp.



Government Camp in 1928

## Rhododendron was Rowe

The town of **Rhododendron** used to be called **Rowe**, back at the beginning of the 20th century. Henry S. Rowe, mayor of Portland from June 1900 to January 1902, built Rhododendron Inn in 1905 on the 160-acre homestead he had purchased from Henry Hammond for \$1,200.



## SkiWay to Timberline

In the early 50s, the Skiway aerial tram from Government Camp took skiers up to Timberline. It was actually a bus with wheels above its roof. The wheels travelled along a stationary cable. It took about 10 minutes one way! It was dismantled after a few short years, when a bus service proved faster and cheaper.

*Photo from "Mt. Hood – A Complete History" by John F. Grauer, published in 1975.*



### Skiway to Timberline

Close-up of the bus that traveled along stationary cables from Government Camp to Timberline. It operated between 1951 – 1956.

### Skiway or Skyway?

It was spelled "Skiway", but it seems everybody pronounced it "Skyway".

### A video newsreel from the 1950s

Some accounts claim that the "Skiway" took 30 minutes to complete the ride to Timberline, but this newsreel from 1956 says it took only 10 minutes. See it for yourself on YouTube at:

<http://www.youtube.com/watch?v=XUJBHKlrBCE>

# Multorpor is now Skibowl East

## Don't Call it Multipor!

**Multorpor mountain** was named by Will Steel for Multorpor Republican Club of Portland. The name is derived from the first letters of Multnomah, Oregon, and Portland: MULT-OR-POR. Not "Multipor", as some people mispronounce it! Now you know.

## Multorpor and Skibowl



Multorpor and Skibowl began as two separate ski areas in 1928. The old supervisor of Mount Hood National Forest, Thomas Sherrard, was not interested in opening up the site for recreation.

"There are only two functions for this forest," he said. "One is to provide watershed area. The other is for grazing land."

"But the public wants trails and ski areas," Everett Sickler countered.

"The public can go to blazes," retorted the forester.

Still, the public prevailed, and by January 6, 1929, the newly founded Cascade Ski Club organized a ski jumping tournament attended by 3600 spectators.

The warming hut on the Skibowl side was built in 1937.

The two ski areas merged in 1964, when new owners took over, and Carl Reynolds became the president.

(Photo of skiers walking up into Ski Bowl circa 1938,)



**Ski jumping at Multorpor in the early 1930s.**

*Photo by Hjalmar Hvam*

Notice there were more spectators than skiers!